



# Robert Murray

5 & 6 Inverleith Gardens, Ferry Road,  
Edinburgh, EH3 5PU

Tel. 0131 552 1220 :: 0131 478 7021

website [www.stamp-shop.com](http://www.stamp-shop.com) email [auktion@stamp-shop.com](mailto:auktion@stamp-shop.com)

AUCTION  
CATALOGUE  
ONE POUND



## Stamps and Collectables Auction

Monday 25 March 2019  
at 7.00pm

Catalogue of Postage Stamps and Collectables to be sold by Public Auction, within the STEWART'S-MELVILLE CLUB PAVILION, 523 FERRY ROAD, EDINBURGH, EH5 2DW.

On view at Pavilion on afternoon and evening of sale, and at Shop for one week prior to sale (see details later in catalogue).



Lot 244





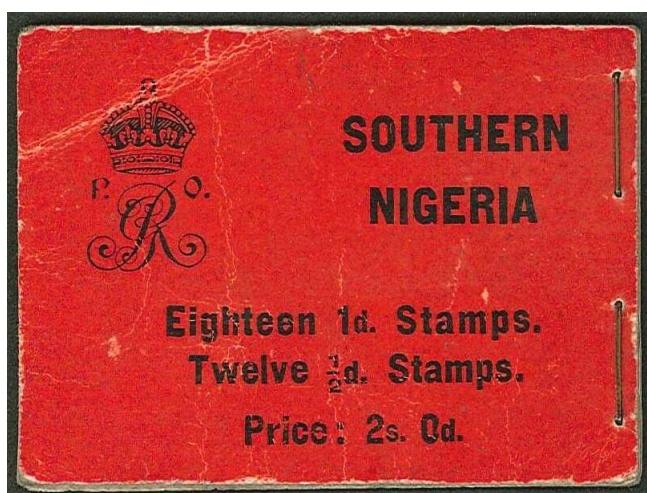
104



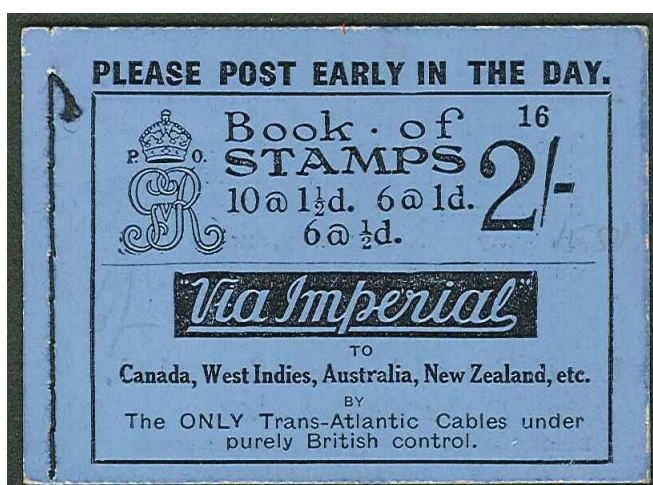
105



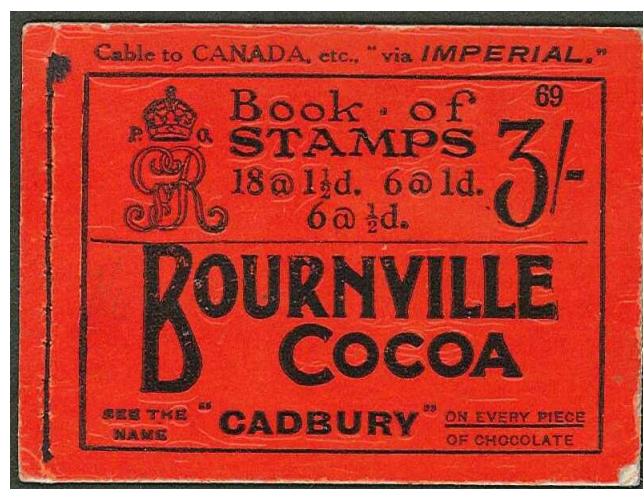
ex 92



224



329



330



ex 120



327

**Viewing times are listed on page 21.**(Viewing starts on Tuesday 19<sup>th</sup> March)**Collections and Mixed Lots.**

- 1 Two cartons with 24 assorted albums/stockbooks (one broken) with world stamps, loose partly sorted, covers, etc. While much is fairly common, better are in Australia, Canada, Israel, Italy, NZ, and USA. (1,000s) [1a] .. .. £120.
- 2 Old *Centurion* album with used and m.m. from earlies up to c.1950s, mainly odd values. Includes UK Penny Black (3 margins, red MC), Italian States (16 inc. some genuine), China inc. Hankow 1893 2c u., etc. (Many 100s) ☑ .. .. £100.
- 3 Large and heavy plastic tub with 21 assorted albums/binders of world stamps, loose, and covers in shoeboxes, plus more covers in three albums, etc. (1,000s, 100s covers) [1a] £100.
- 4 Three albums – a worn *Centurion* album of general world stamps to about 1940s, from which the Commonwealth A-R has been transferred into two *Swing-o-Ring* albums. Also a few loose. (Many 100s) ☑ .. .. £100.
- 5 Old club exchange book with nice selection of early European (and a few Overseas). Includes Greece Paris prints Large Heads, France and Colonies, German States, etc., and the condition generally fair to fine. (152) .. .. £100.
- 6 Heavy carton with wide-ranging general world collection in five stockalbums. Mainly odds but with very occasional mint sets etc. (1,000s) [1a] .. .. £100.
- 7 Album of m. & u. mostly Commonwealth inc. Falkland 1933 Centenary ½d to 6d m.m., Japanese Occupation of Brunei, various Malaya, 1946 Indonesian Republic, etc. (100s) ☑ 80.
- 8 Big accumulation in two cartons with all sorts of generally fairly modern stamps and covers. Includes a few UK p.packs and some decimal postage, some numbers in British Africa (though little value), etc. (1,000s) [1a] .. .. 80.
- 9 Box with two *Ideal* albums (vol.1 up to 1914/15 parts I & II, vol.2 1915-30 parts I & II, rather sparse). Also three other albums/stockbooks, two cover albums of UK FDCs and pres.packs, two 1981 Royal Wedding albums, two of *The British Postage Stamp* by Robson Lowe, etc. (Many 100s) ☑ .. .. 70.
- 10 Album with world collection arranged by year of issue 1887-1972, notable for some better airmail issues inc. Germany 1922 Zeppelin 2m u., Newfoundland 1931 \$1 Routes m.m. (small crease), USSR 1932 Air Express 1r u., France 1936 100<sup>th</sup> Flight 10f m.m., etc. (100s) ☑ .. .. 70.
- 11 Old album (published by Moens, 1878) with a typically untidy and unpredictable collection of very varied quality. Contains many stamps of interest, as well as many standard common items, and numerous forgeries. Most stamps stuck down. Album has loose pages. (100s) 50.
- 12 Small box of world stamps on stockcards, much Commonwealth, some unsold *Buy or Bid* Lots, plus a few covers and postcards. (100s) ☑ .. .. 50.
- 13 Box with 3 small stockbooks of m. & u. (inc. one of Jamaica, and various 1937-48 omnibus inc. dupl. Victories), world on album pages, stockcards, packets, etc. (1,000s) ☑ 50.
- 14 A carton of on- and off-paper, album leaves, covers, small albums and stockbooks, etc. (1,000s) ☑ .. .. 50.
- 15 Small box with three junior world albums, an old club book of Commonwealth (with a few useful earlier), etc. (100s) ☑ .. .. 50.
- 16 Carton with New Zealand album, Canada album, world in 4 assorted albums/stockbooks, world sorted into envelopes, various covers, some literature, etc. (Many 100s) ☑ 50.

Phoning for results ? Note that our shop does not open until noon on a Tuesday, and we do not normally answer the phone on the day after the auction until after that time.

Alternative bids, and overall spending limits, are acceptable. Advice available if required !

***A Buyer's Premium of 10% (vat-inclusive) will be added to all sale prices.***

**Collections and Mixed Lots, continued.**

- |    |  |     |
|----|--|-----|
| 17 | The shop's charity box, filled with all manner of odds and ends handed in to us. Extensive this time, in two cartons and two medium boxes. Contains various albums (mainly junior), loose in envelopes/packets, some covers, etc. (Many 1,000s) [Please note that the entire proceeds – including the buyer's premium – are sent on to charity. The buyer of the lot has the option to nominate a charity.] [1a] .. .. . | 50. |
| 18 | Three boxes and a crate of mixed albums, stockbooks, loose, etc. Some of the albums are sparse, others better filled. Also a box of commercial covers, and a box of modern post-cards. (1,000s) [1a] .. .. .   | 50. |
| 19 | Box with world mint and covers (inc. Hong Kong 1982 defin set u.m. and FDC), used, much unsorted, five junior albums, NZ packs, UK FDCs 1960-95, etc. (1,000s, 100s covers) <input checked="" type="checkbox"/>  | 40. |
| 20 | Box with unsorted world in two shoeboxes, more partly sorted in envelopes, <i>Buy or Bid</i> Commonwealth lots, etc. (1,000s) <input checked="" type="checkbox"/> .. .. .  | 40. |
| 21 | Box of albums, album pages, covers, loose stamps, display pages on Easdale Island, etc. Requires sorting. (1,000s) <input checked="" type="checkbox"/> .. .. .   | 40. |
| 22 | A box of covers, loose stamps, album pages, etc. Requires sorting. (1,000s) <input checked="" type="checkbox"/> ..   | 40. |
| 23 | A box of eight assorted albums of stamps and covers, and some loose. (Many 100s) <input checked="" type="checkbox"/>   | 40. |
| 24 | Medium carton with albums, covers, loose stamps, etc. (1,000s) <input checked="" type="checkbox"/> .. ..   | 40. |
| 25 | Box of loose stamps, covers, etc. (100s) <input checked="" type="checkbox"/> .. .. .   | 40. |
| 26 | Box with covers, loose stamps etc. inc. bundle of duplicated 1960 World Refugee Year folders. (100s) <input checked="" type="checkbox"/> .. .. .   | 40. |
| 27 | <i>Ideal</i> album (7th edition, quite worn) with mint and used collection (dated 1918, plus others added up to c.1940), mostly odd values with a few part sets. (100s) <input checked="" type="checkbox"/> ..   | 40. |
| 28 | Worn <i>Ideal</i> album with general collection generally to about 1930s (some later) inc. a UK Penny Black (2 margins, cut-into), plus some others. (100s) <input checked="" type="checkbox"/> .. ..  | 40. |
| 29 | Tub and box with 5 junior albums, thick bundle of album pages (some sparse), bundle of 1950s magazines, 3 cover albums of UK FDCs 1965-88 (handwritten), etc. (100s) <input checked="" type="checkbox"/>   | 40. |
| 30 | Tub with world on/off-paper, partly sorted, in five small boxes, 17 small tins, bags, etc., Noting some Commonwealth u.m. KG6/early-QE new issues. (1,000s) <input checked="" type="checkbox"/> ..   | 40. |
| 31 | Box with Hinton <i>Empire Postage Stamp Album</i> (quite sparse), and two Lincolns, partly Picked over. (100s) <input checked="" type="checkbox"/> .. .. .   | 40. |
| 32 | Box with varied contents inc. album of world covers (very mixed, mainly of some interest), album with small colln. of Bolivia, small bundle of world covers (inc. a few Afghan FDCs), and a couple of other items. <input checked="" type="checkbox"/> .. .. .   | 40. |
| 33 | Carton with covers (FDC and commercial), album pages, four albums/stockbooks, stamps on stockcards, album of UK PHQs, two albums of UK FDCs (1982-83, 1991-92 with bureau, alternative, and special cancels), old album of postcards (European views), etc. (100s, 100s covers) <input checked="" type="checkbox"/> .. .. .  | 40. |
| 34 | Odd mix comprising a small collection of Ceylon up to 1960s (some reasonable QV-KG5 but some tone spots), Israel m.m. on pages (inc. Halbanon sheet heavily mounted), and a few UK (inc. a few different KE7 with special postmark for 1912 Stamp Exhibition). (100s) <input checked="" type="checkbox"/>  | 40. |
| 35 | Medium carton of album leaves, covers, loose on/off-paper, junior albums, etc. (1,000s) <input checked="" type="checkbox"/>  | 40. |
| 36 | Slim stockbook with odd world mix. Some very common, but some medium-value older Commonwealth, France, etc. (100s) <input checked="" type="checkbox"/> .. .. .   | 30. |
| 37 | Box of covers, world on/off-paper, etc. (Many 100s) <input checked="" type="checkbox"/> .. .. .  | 30. |
| 38 | A box of six junior albums, world on-paper, etc. (1,000s) <input checked="" type="checkbox"/> .. ..  | 30. |
| 39 | Mixture in carton with four various albums, UK 1986-88 year books, album pages, and others. (Many 100s) [1a] .. .. .   | 30. |

The Auction Venue is 650 metres West of our Shop, on Ferry Road. It has its own car park.

The bar (upstairs) is open 6-10pm and also serves a variety of food, teas and coffees. Please note that we do not allow drinks at the viewing tables, but you are welcome to bring drinks down from the bar once the auction has started.



**Collections and Mixed Lots, continued.**

- 40 Heavy box with two albums of standard UK, stockbook of world, 2008 *Stamps of the World* (as new), etc. (100s) [1a] .. .. . 30.
- 41 Stockbook of world (mainly used QE Commonwealth), and various world on stockleaves and stockcards inc. some moderate France 1950s mint. (100s) ☒ .. .. . 30.
- 42 Box with a world album of mostly used foreign, shoebox of off-paper in packets, bundle-ware, postcards, etc. (1,000s) ☒ .. .. . 24.
- 43 Box of 20 unsold *Buy or Bid* lots, inc. a few covers/postmarks, UK, Channel Is., etc. Total upset price c.£100. ☒ .. .. . 20.
- 44 Folder of Commonwealth and foreign mix (100s) and a folder of mainly Scottish commem covers. ☒ .. .. . 20.
- 45 Small mix comprising a stockbook of Commonwealth (c.1,000, cheaper mix), 7 items of Scottish postal history, and an illuminated magnifier. ☒ .. .. . 20.
- 46 A few packets of world stamps by theme, plus other African by country. (c.1,400) 15.
- 47 **British Commonwealth**; a heavy carton with much Australia 1913-2007 m. & u. in three stockalbums inc. min. sheets and booklets, *Bicentennial Collection* (5 folders), 2 albums of Australia FDCs, etc. Also a binder of UK, another of Rhodesias/S.Africa, and some empty stockleaves. (1,000s) ☒ .. .. . £100.
- 48 --; three-volume collection from QV to about 1985 of m. & u. with sets, part sets, and odd values. Also an album of m. & u. omnibus issues of 1937, 1945, 1949, 1953. (Many 100s) ☒ 90.
- 49 --; two albums of u. & m.m. inc. Cape triangular 1d, 4d u., KG6/early-QE sets and part sets m.m. inc. Nyasaland 1945 set, NZ 1953 definitives. Earlier more used inc. NZ early airmails. (100s) ☒ .. .. . 60.
- 50 --; album leaves/stockleaves of m. & u. with much QE (some earlier), mainly Fiji, Gibraltar, Leeward, Falklands Dependencies, and Nigeria. (100s) .. .. . 50.
- 51 --; album of KG6/early-QE with just a few later, with odd values/part sets/sets m.m. and used. A few foreign (USA etc.). (Many 100s) ☒ .. .. . 50.
- 52 --; collection in four albums with nothing very modern inc. some British Occ. of Italian Colonies m.m. values to 10/-. Also a junior world album. (100s) ☒ .. .. . 40.
- 53 --; box with album of Canada FDCs 1990-93, booklets, stamps, airletters, 2000 yearbook, an album of Norfolk Is. FDCs etc., album of Australia FDCs, album of various countries PHQs and two small albums of stamps. (Few 100s) ☒ .. .. . 40.
- 54 --; u.m. seln. of KG5 pictorials of St. Lucia (38), Bermuda (26), St. Helena (34), and Bahamas (4) inc. a few pairs and blocks. S.t.c.£200. .. .. . 40.
- 55 --; small m. & u. range of Ceylon (19, s.t.c.£19), Fiji (9, £18), Gibraltar (1938-51 perf.13½ 1/- and 2/- m.m., £305), and Gold Coast/Ghana (26, £88, inc. 1948 S.Wedding set m.m.). 40.
- 56 --; **Africa**; two well-filled albums of mint and used from QV to QE with many better stamps included (often catalogued tens of pounds each) in the QV to KG6 period in many of the countries. Includes Atlantic Islands. Many mint are stuck at hinges. Stronger countries include Ascension, Bechuanaland, Gambia, Gold Coast, K.U.T., Morocco Agencies, Nigerias, Nyasaland, Rhodesias, St. Helena, Somaliland, S.W.Africa, Tanganyika, Tristan da Cunha.  
[Several lots in this auction, from the same source, have a problem with many of the mint stamps having been heavily mounted, a proportion of which are stuck to the page around the stamp hinge. In order to prevent damage we will not allow viewers to “experiment” with these. The standard is about the same in all these collections.] ☒ .. .. . £700.

Follow us or connect online – as well as our main website at [www.stamp-shop.com](http://www.stamp-shop.com) we can be found on the social media by searching for “**Robert Murray Stamp Shop**” on LinkedIn and Facebook. Our Website will still be the first port-of-call for most information, but the Facebook and

***A Buyer's Premium of 10% (vat-inclusive) will be added to all sale prices.***

**Collections and Mixed Lots, continued.**

- 57 **British Commonwealth; Americas**; three well-filled albums of mint and used QV to QE with many better stamps catalogued at tens of pounds each in the QV-KG6 period in many countries. Has many West Indies and also includes Falkland Islands inc. some better there. Many of the mint stamps are stuck at the hinge. (1,000s) [See note at lot 56] ☒ .. .. £650.
- 58 --; **Asia**; two well-filled albums of mint and used from QV to QE with many better catalogued at tens of pounds each in QV-KG6, noting early Ceylon, India and States. Many mint are stuck at the hinge. (1,000s) [See note at lot 56] ☒ .. .. £500.
- 59 --; **Australasia**; a well-filled album of m. & u. from New Zealand, Papua New Guinea, and Pacific Islands from QV to QE with many better cat. In tens of pounds each in QV-KG6 Period. Many mint are stuck at hinge. (100s) [See note at lot 56] ☒ .. .. £140.
- 60 --; **Europe**; a well-filled album of m. & u. from Cyprus, Gibraltar, Ireland, Malta, Jersey, Guernsey, I.o.M., etc. from QV to QE with many better (cat. tens of pounds each) in QV-KG6. Many stuck at hinges. Also an album of mint Guernsey. (100s) [See note at lot 56] ☒ .. .. £150.
- 61 --; **West Indies**; seln. on stockcards of Cayman Is. m. (31, s.t.c.£64), Jamaica m. (17, s.t.c. £136, inc. 1938-52 10/-, £1, 1948 S.Wedding £1), Montserrat m. (13, s.t.c.£129, inc. 1938-48 ten values perf.14), mainly fine m.m./l.m.m./u.m. .. .. 40.
- 62 --; --; small used seln. of St. Kitts-Nevis 1903-18 (13, s.t.c.£165), Jamaica 1889-1962 m. & u. seln. (85), and Jamaica 1964-71 u.m. on pages (160). .. .. 20.
- 63 --; **Omnibus**; 1937 Coronation complete (202) in singles plus fourblocks on pages. Some blocks are in photocorners (and probably all u.m.), others are hinged on upper pair. Singles are m.m. .. .. £180.
- 64 --; --; 1949 UPU u.m. colln. in stockbook, not quite complete. Generally very fine but some are just below par – minimal offsets, bends (not creases), etc. (275) ☒ .. .. 50.
- 65 --; --; 1953 Coronation almost complete u.m. in stockbook in either fourblocks or strips of four, the Crown Colonies designs with marginal imprints. (103 different) ☒ .. .. £100.
- 66 --; --; two albums of royal events, a stockbook of dupl. 1981 stamps and m.s., 1981 booklets, and a NZ Q.Mother 100 souvenir book. (1,000s) [1a] .. .. 20.
- 67 **Europe**; heavy carton with 11 well-filled albums of m. & u., much middle to modern period used, with a wide range of countries represented. Many of the mint are stuck at the hinge. (1,000s) [See note at lot 56] ☒ .. .. £200.
- 68 **Foreign**; box with envelope of Swiss stamps m. & u., FDCs, booklets, year packs, shoebox of Scandinavia stamps, covers, yearpacks, etc., album of USA, album leaves of Belgium, etc. (100s) ☒ .. .. 50.
- 69 **Overseas**; a heavy carton with nine well-filled albums of mint and used, much middle to modern period used, with USA (1 volume), Middle East (2), Asia (2), Africa (2), and Americas (2). Many mint are stuck at their hinges. (1,000s) ☒ .. .. £180.
- 70 **Scandinavia**; two stockleaves with a modern seln. of u.m. or c.t.o. Norway, Sweden, Denmark, and a few others. S.t.c.£490. .. .. 30.
- 71 **Thematic**; heavy carton of modern souvenir collections with *History of Space Exploration* (2 vols.), *Route to Victory* coin cover collection, *Railway Heritage* (2 vols.), *24 Hours of D-Day, Victory - End of WW2*, mixed album inc. 1946 Victory omnibus complete u.m. (164). (Many 100s) [1a] .. .. £100.
- 72 --; box with seven albums – one is railway covers (c.69), four with aviation covers and postcards (c.210), one of Royal Navy covers (c.150, many signed), and one of WW1 commemoration with stamps, m.s., and covers (c.80 items). ☒ .. .. 60.
- 73 --; **Art; Titian**; three binders of u.m. stamps, min. sheets, etc. on printed pages. (100s) ☒ 40.
- 74 --; **Aviation**; m. & u. collection in a stockbook. (c.1,500) ☒ .. .. 30.

Alternative bids, and overall spending limits, are acceptable. Advice available if required !

**Collections and Mixed Lots, continued.**

- 75 **Thematic; David Livingstone**; thick bundle of display pages with stamps, labels, covers, postcards, and illustrations. Some more unusual items. This collection was put together by the 1930s-70s owner of Ulva Cottage, Livingstone's home in Hamilton. (100s) ☒ 40.
- 76 --; **Football; World Cup Masterfile** colln. of stamps and covers for 1986 in six albums. Also two albums of FDCs of earlier World Cups. (100s) ☒ .. .. 30.
- ☛ **Forgeries**; see China, Heligoland.
- 77 **Covers; Aviation**; six covers comprising – {1} USSR 1931 Zeppelin Polarfahrt cover with N.Pole Flight 35k and 2r imperf with BRISE-GLACE MALYGUIN cancels (slight toning), {2} Germany 1937 *Hindenburg Deutschlandfahrt* card with 8 stamps, {3} Argentina 1930 *Condor* flight cover, {4} USA 1936 *Hindenburg* cover, {5} Poland 1936 Gordon-Bennet cover with International Balloon Competition special cancels, and {6} France 1946 *Neptune* balloon cover. .. .. 40.
- 78 --; **Philatelic Numismatic Covers**; two albums of 2002 Golden Jubilee covers (Mercury) with UK coins face £12 (20). Also UK £5 coins 2000-07 (4), RBS 2000 commem. £20 Queen Mother note, 1970 proof set, etc. ☒ .. .. 80.
- ☛ --; --; see also UK (Philatelic Numismatic Covers).
- 79 **Literature**; SG *Commonwealth & Empire 1840-1970* catalogue, 2017 ed<sup>n</sup>., good 2<sup>nd</sup>-hand. ☒ 30.
- 80 --; SG *Commonwealth & Empire 1840-1970* catalogue, 2016 edition, good 2<sup>nd</sup>-hand. ☒ 20.
- 81 **Supplies (Second-Hand)**; single size cover albums, as new. (9) ☒ .. 24.
- 82 --; heavy carton with various supplies – glassine bags, albums, FDC pockets, etc. Also 7 packs (each of 25) eBay bubble bags for posting (3 different sizes). [1a] .. 30.

**Non-Philatelic Items (Collectables)****BANKNOTES**

- 83 Small bundle of UK and world, mainly quite modern and circulated (some better) inc. UK face value £30 (mainly Scottish), Canada total \$50, etc. (74) .. 60.
- 84 **Scotland; Caledonian Bank**; 1904 (4 Jan.) £1 note in very poor condition (much wear, and various faults, the worst of which is unsightly sticky tape stuck down the centre of the note on both front and back). PMS CA15b (cat. From £1,500 for fine). .. £100.
- 85 **Portugal**; 1979 (1982) 500e – seven examples (of which six sequential) in condition from VF to EF/unc. .. 40.

**CIGARETTE AND TRADE CARDS**

- 86 Various collections of cigarette cards in albums. Some interesting and older noticed. (Many 100s) ☒ .. 90.
- 87 Large mixed quantity of cigarette and trade cards in two plastic storage tubs. Mostly common but some more unusual or scarcer noted here and there. (1,000s) [1a] .. 50.
- 88 Two old slip-in albums with sets and odds inc. Wills 1911 *Celebrated Ships* set (50, cat.£60), 1908 *Cricketers* (53 cards, possibly set, £225+), 1912 *Historic Events* set (50, £60), 1911 *Signalling Series* (49 of 50), some useful odds, etc. (c.370) ☒ .. 50.
- 89 Cigarette cards loose, in tin, and old albums. General mix. (Many 100s) ☒ .. 40.
- 90 Two albums of mixed mainly sets. Some pre-war, some modern, some repros. (19 sets plus various odds) ☒ .. 40.
- 91 **Brooke Bond**; a wholesale quantity of cards, apparently in reasonable order, many bundled in sets, and some as sorted odds. High level of duplication. Over 3 metres of cards, which we estimate to be probably about 10,000 cards. [1a] .. 75.

**Non-Philatelic Items, continued.****CIGARETTE AND TRADE CARDS, continued.**

- 92 **Imperial Tobacco Co. of Canada**; 1912 *Hockey Players* selection of 18 different. Mainly very fine, though a few faults. Cat.£450. Also 9 different *Lacrosse Series* in poor to very fine condition. .. .. 60.
- 93 **Liebig**; collection of mixed Liebig cards, probably mainly in sets. (c.1,500) ☑ .. 40.
- 94 **Wix**; Kensitas 1934 silk *Flowers* (medium size) set (60) in original folders in a contemporary slot-in album (cat.£270, a little toning on folders), part set (40) in modern album, and 1934 silk *National Flags* set (50) in contemporary stuck-in album (£70). ☑ .. 50.
- 95 **Sport**; a few pages of mainly golf, plus some other sports (some of these the golf cards from sets of mixed subjects). Fair to fine. (76) .. .. 20.

**COINS**

☛ Estimates are based on a gold market price of £990/oz, and silver of £11.50/oz.

- 96 Large quantity of UK and world coins, mostly mid-20<sup>th</sup> Century onwards but with some older, some silver, and some redeemable currencies. A few stamps also. (100s) [1a] .. 80.
- 97 Sweetie tub with world and UK mix, mostly 20<sup>th</sup> Century but some older noted with a scattering of silver. ☑ .. .. 30.
- 98 **United Kingdom**; 1750 farthing in attractive VF/EF grade. ☑ .. .. 50.
- 99 --; George III crown (worn), 1887 crown, 1935 Jubilee crowns (3), plus 1889 double florin EF, and 1825 halfcrown about fine. ☑ .. .. 50.
- 100 --; 1977-2006 seln. of 14 Royal Mint uncirculated coins/sets, inc. £5 crowns (6), and two of 1989 £2 Claim of Right/Bill of Rights folder. ☑ .. .. 60.
- 101 --; 1977-97 seln. of proof sets (std. or de-luxe) with slight duplication. (12) ☑ .. 40.
- 102 --; selection of Royal Mint silver proofs in original boxes (18 items) comprising £5 (3), £2 (6 of 1986 Games, one of 1989 2 x £2 Bill and Claim), £1 (4), 25p (2), 2 x 10p (1), and 5p (1). Also 1986 Wedding medallion. ☑ .. .. £120.
- ☛ See also Mixed Lots (Covers; Philatelic Numismatic Covers).
- 103 **Gold Coins**; six mainly damaged gold coins – Bengal Presidency AH 1202/19 mohur (normally AGW .3958 oz but holed), and five Egypt 1861-76 Sultan Abdul Aziz 5 qirsh (3 holed, 2 EF – each normally AGW .012oz). ☑ ▲ .. .. £450
- 104 --; **United Kingdom**; 1714 Queen Anne guinea, fair/fine. ☑ ▲ .. .. £270.
- 105 --; --; 1817 George III half-sovereign, fair. ☑ ▲ .. .. £120.
- 106 --; --; 1989 proof sovereign, 400<sup>th</sup> Anniversary issue in original box. ☑ ▲ .. £400.
- 107 --; --; 1981 proof sovereign in original box. ☑ ▲ .. .. £200.
- 108 --; **Spain**; 1747 ½ escudo JB, generally fine but has been mounted as a button (then removed). AGW .0498oz. ☑ ▲ .. .. 50.
- 109 --; **Philatelic Numismatic Covers**; UK 1981 sovereign unc. encapsulated in 1998 Diana FDC. ▲ .. .. £210.
- 110 --; --; UK 1982 sovereign unc. encapsulated in commemorative cover for 16<sup>th</sup> Anniversary of Princess Diana's 21<sup>st</sup> Birthday. ▲ .. .. £210.
- 111 --; --; UK 2003 sovereign unc. encapsulated in commemorative cover. ▲ .. £210.
- 112 --; --; Guernsey 1999 £25 gold coin for Queen Mother's 99<sup>th</sup> Birthday, encapsulated in Guernsey FDC. Coin's AGW 0.2492oz. ▲ .. .. £210.

**MEDALLIONS**

- 113 2015 Waterloo Bicentenary folder containing six medallions; {a} small gold medallion showing Wellington/statue (7g, 14 carat = 0.1312 AGW), and {b} five larger bronze medallions each showing a contemporary monarch. ☑ .. .. £120.



**Non-Philatelic Items, continued.****POSTCARDS**

- 114 **Modern**; four boxes of postcards mid-20<sup>th</sup> Century onwards. (Estimated c.6,000) [1a] 20.

**OTHER CATEGORIES**

- 115 **Documents**; 1789-1884 eight documents (lease, assignment, conveyance, mortgage, etc.) relating to properties in Beeston and Hartlepool. ☒ .. .. 15.
- 116 **Precious Metal Stamp Replicas**; *The Victorian Stamp Ingot Collection* (6), *Castle Stamp Ingot Collection* (2), and KG5 1d stamp repro. All in sterling silver, gross silver weight 128g. ☒ .. .. 40.
- 117 **Collectables Mixed Lots**; bag and box of mixed postcards and cigarette cards (many 100s), and two boxes of baseball cards (1,000s) ☒ .. .. 50.
- 118 --; a few mixed buttons, badges, etc. inc. UK 1893 crown (fair), WW1 British War Medal (damaged), etc. ☒ .. .. 30.
- 119 --; the shop's charity box – coins, some cigarette cards, a few banknotes, empty coin boxes, etc. [1a] .. .. 20.

**End of Non-Philatelic Section****Stamps Classified by Country**

- 120 **Aden**; 1937 Dhow set good/fine used, a few short perfs on 1r and 2r, tiny corner thin on 5r. SG 1-12, cat.£800. .. .. £150.
- 121 **Andorra; Spanish**; 1972 Europa 8p u.m. fourblock, SG 67, cat.£225 each = £900. 60.
- 122 --; --; 2002 Europa (Circus) 50c complete sheet of 50 u.m., SG303 cat.£22 each = £1,100. 50.
- 123 **Ascension**; 1922-53 selection of mostly m.m. on stockleaves inc. 1922 opt. short set to 3d m.m. (plus ½d used), 1935 Jubilee set (4) u.m., 1938-53 defin set (16 + 16 extras), 1948 S.Wedding set (2) m.m., etc. Cat. c.£800. (62) .. .. 90.
- 124 --; 1924-33 set (12, plus 1d shade) fine l.m.m./m.m., one perf short at right of 3/-. SG 10-20 cat.£460. (13) .. .. 90.
- 125 --; 1938-70 m. & u. range on two stockleaves inc. 1938-53 values to 2/6 f.u., 1956 set (13) u.m., 1963 Birds set (14) m.m., etc. (c.100) .. .. 50.
- 126 **Australian States; Victoria**; 1884-96 3/-, 4/-, 5/-, and 1884-92 2/6 unused (some part gum, a few perf faults). SG 260c, 268, 269, 292b, cat.£580. .. .. 50.
- 127 **Australia**; 1913-86 colln. of m. & u. in a printed hingeless album, with 1913 'Roos to 2/- u., 1914 KG5 Heads to 1/4 m. or u., and later stamps in both these issues, many catalogued tens of pounds each. Also includes 1932 Sydney Bridge 5/- f.u., good run of KG6/QE inc. 1963 Navigators £2 f.u., 1971 Christmas block of 25 u.m., etc. (100s) ☒ .. £180.
- 128 --; a well-filled album of m. & u. from 1913 to recent, as well as States issues, with many catalogued at pounds each. Also inc. AAT, Cocos, BAT, etc. Many mint stuck at hinges. [See note at lot 56] (100s) ☒ .. .. 90.
- 129 --; 1937-49 Robes thin paper set (3) each in fine used corner marginal block with Commonwealth imprint, plus similar 5/- block with Ash imprint. The £1 block with some trimmed perfs at top. Also thick paper single 5/- f.u. and 10/- m.m. .. .. 60.
- 130 --; 1981-2008 complete run of year books in heavy carton, inc. 2008 Olympics. Face value c.A\$1,325 (= c.£710). (39 books) [1a] .. .. £180.
- 131 **Austria**; 1867-1999 m. & u. colln. in album. Also 1850-1994 m. & u. in stockbook, and on loose pages with slight dupl. (Many 100s) ☒ .. .. 40.
- 132 --; 1950-53 Air (Birds) set (7) l.m.m./m.m. (cat.£535 for u.m.), and a few others. (21) 40.

Scottish Philatelic Congress – 12/13 April – Dewars Centre, Perth. See further notes later in catalogue.

*A Buyer's Premium of 10% (vat-inclusive) will be added to all sale prices.*

- 133 **Bahamas**; 1863-84 selection of m. & u. on stockleaf inc. 1863 values to 6d used with shades. S.t.c.£1,000 (as cheapest shades). (30) .. .. 60.
- 134 **Bechuanaland**; 1888-1953 seln. of m. & u. on stockleaf with various overprints, mixed later issues. S.t.c. c.£280 (76) .. .. 40.
- 135 --; 1885-1965 m. & u. mix on stockleaf with slight dupl. and a number of better values (e.g. 1888 5/- heavy m.m. (tone spot). S.t.c.£350. (76) .. .. 30.
- 136 **Belgium**; shoebox of commercial covers and cards, mainly 1940s-80s. (c.700) ☑ 10.
- 137 **Burma**; fragile bundle of telegraph forms used about 1900s, a couple of later envelopes. ☑ 10.
- 138 **Canada; Newfoundland**; 1937 Additional Coronation 3c Die I (perf.14, diagonal crease affects six stamps) and Die II (perf.13½), each in u.m. corner block of 25. SG 258, 258ec, cat.£1,325. .. .. 75.
- 139 --; **Nova Scotia**; 1860-63 yellowish paper 12½c black - four u.m. fourblocks. SG 17, cat. £38 each = £608. .. .. 60.
- 140 **Canada**; 1892 cover to Denmark with ten of 1882-97 ½c (five-strips, three-strip, pair) with Toronto c.d.s. cancels, other marks, faulty at right. .. .. 20.
- 141 --; 1928-29 10c and 50c heavy m.m., and 1937-38 20c, 50c, \$1 m.m., cat.£298½. 30.
- 142 --; 1975-99 box of mint stamps, first day covers etc., much in envelopes as delivered. From a correspondent in Canada, so completeness not certain. (100s) ☑ .. .. 80.
- 143 --; a big mixed box with albums and stockbook, various loose, inc. an album of booklets, a shoebox of sorted used duplicates, etc. ☑ .. .. 70.
- 144 **China**; well-filled stockbook with duplicated ranges of used and unused of mixed periods (but little very modern). Includes c.200+ Junks, hundreds of Sun Yat-sen, etc. (c.3,000+) ☑ 40.
- 145 --; 1885-88 5c perf.12 m.m. (SG 15 cat.£225, but tiny thin and mark on face), plus 14 forgeries of 1878-94 issues "used". .. .. 30.
- 146 --; **People's Republic**; 1986-2013 box of twelve various special packs/books inc. 1986 and 1988 year packs and later well-illustrated books/packs inc. some silk packs with various stamps, covers, etc. One duplicate. Minor knocks. ☑ .. .. 40.
- 147 **Denmark**; 1854-2000 used collection on pages. Sketchy in earlier issues, but a good range of commercially used later. (100s) ☑ .. .. 30.
- 148 --; 1912 5k GPO wmk. Crowns fine used, centred to right (SG 134 cat.£180), and 1915 5k GPO wmk. Crosses good used (centred slightly left, couple short perfs.) (SG 185 cat.£180). 40.
- 149 --; 1942-81, 1984-2013 colln. of first day covers in five albums (2 single, 3 double-size). Typically hand-written addresses to 1981, then unaddressed 1984 onwards. (c.370) ☑ £100.
- 150 **Dominica**; 1883-c.1990 m. & u. seln. on various pages inc. 1951 set (15) .m., various later sets/part sets. (c.400) .. .. 40.
- 151 **Falkland Islands**; 1929-37 Whale & Penguin short set to 5/- (missing 4d but with both shades of 1/-) m.m., cat.£273. .. .. 50.
- 152 **Falkland Islands and Dependencies**; 1891-1953 mainly m.m. range on five stockleaves with numerous medium values, 1952 set (14) m.m., most of F.I.D. 1944 opts. set (31 of 32), 1948-49 Thin Map set (9) m.m., etc. Also 1878 1/-poor u. Cat.£1,000+ (140) .. £100.
- 153 --; two-volume printed album with Falkland pages starting at 1878 but only a few stamps up to 1952, then better range of u.m. stamps to 1982, the Dependencies mostly u.m. inc. 1944 (4 sets), later sets inc. some S.Georgia and B.A.T. (100s) ☑ .. .. 50.
- 154 **Falkland Islands Dependencies**; 1946 Thick Map set (8) in u.m. fourblocks, the upper-left stamp in each block with the "gap in 80<sup>th</sup> parallel" variety (1d has pulled perf on this stamp). SG G1/1a-G8/8a, cat.£77½. .. .. 20.
- 155 **Finland**; 1875-2000 used collection on pages from a medium range of earlies inc. 1875-84 8p g.u., 32p g.u., some of the medium-priced 1930s charity issues (inc. 1932 Red Cross set g./f.u.), and a decent range of modern commercially used. (100s) ☑ .. .. 80.

Phoning for results ? Note that our shop does not open until noon on a Tuesday, and we do not normally answer the phone on the day after the auction until after that time.

156	<b>France</b> ; 1893-1927 stockleaf of u.m. and m.m. mostly defines (largely <i>Sowers</i> ) and postage Dues. S.t.c.£500+ (66) .. .. . 60.
157	--; 1930-71 u.m. range on stockleaf, usually with duplication, of mainly Air, Red Cross, and postage due issues, usually in sets. S.t.c.£530. (c.190) .. . 40.
158	--; 1936-60 m.m./l.m.m. range on stockleaf, nearly all-different, with sets and higher-catalogued items. S.t.c.£620. (81) .. .. . 40.
159	--; 1950-2002 (and a few earlier) colln. of m. (mostly u.m.) and u. in 3 albums and 1 stockbook, often both m. & u., with the mint often in pairs from 1972-84. Includes National Relief Fund and Heroes of Resistance sets and odds. Also four stockbooks of odds, two albums of FDCs etc., some literature, 1983 <i>Vol Humain</i> PNC, and a few foreign. ☑ £100.
160	--; 1960-90 mint collection in four Yvert et Tellier hingeless printed albums. Nearly all u.m. (few l.m.m. in early 1960s) and mostly complete in standard issues to about 1987 with less later. Contains some precancels etc. S.t.c.£2,700. (100s) ☑ .. £160.
161	<b>Gambia</b> ; 1886-1953 m. & u. selection on stockleaf with various medium values, 1938-46 set (16) m.m., etc. S.t.c.£390. (80) .. .. . 40.
162	<b>Germany</b> ; three albums and a stockbook of m. & u. from 1872 up to c.2000 inc. Third Reich m.m. & u., West Germany (decent used colln. to c.1995 inc. some better earlies, and mint up to 1990 in stockbook). Some others at back of stockbook. (1,000s) ☑ .. 50.
163	--; flat box with three stockbooks of m. & u. of many periods inc. Third Reich, album pages of W.Germany defines m. & u. pairs (inc. se-tenants), sales pages of Berlin, W.German 1990s booklets (these s.t.c.£200), etc. (100s) ☑ .. .. 40.
164	--; 1920-23 used selection on stockleaf. Looks ordinary but inc. 1920-21 Germania set (13), 1921 (May-Dec) set (19), 1922-23 Air low values (5, probably c.t.o.), etc. S.t.c.£350. (76) 30.
165	--; six approval books of Bavaria, Germany, E. & W. Germany. (100s) ☑ .. 24.
166	--; <b>Allied Occupation</b> ; 1945-49 m. & u. colln. on pages of the Soviet Zone inc. 1949 Goethe min. sheet m.m. Also 1946-48 general issues. (c.110, 1 m.s.) .. .. 50.
167	--; <b>Soviet Zone and East Germany</b> ; 1948-53 range of m.m. on stockleaf inc. 1950 Leipzig, Academy of Science sets. S.t.c.£1,140 (for u.m.) (52) .. .. 80.
168	--; <b>East Germany</b> ; 1949-70 colln. in Schaubek album with many better earlies inc. 1950 Academy set u.m., 1950 Philatelic Exhib., Leipzig, DEBRIA m.s. u.m., 1951 China set used with extra 50pf on piece, 1951 Youth set m.m., 1953 Marx min.sheets perf & imperf u.m. (one perf sheet has crease at upper left), 1958 National Memorial m.s. used, with mostly u.m. in 1960s. Also 1971-90 u.m. colln. in two Lighthouse albums. In addition W.Germany 1968-77 mostly u.m. in Lindner album. (100s) ☑ .. .. £120.
169	<b>Gibraltar</b> ; selection of sixteen UK QV stamps all with "A26" cancels, generally sound to fine. .. .. . 40.
170	--; 1886-1950 m. & u. on stockleaves, the main value in a range of 1938-51 defines to 5/- (mainly m.m. with good variety of perfs etc.). (c.130) .. .. 30.
171	<b>Gold Coast</b> ; 1884-1953 m. & u. seln. on stockleaf with QV to 1/-, KE7 to 1/-, KG5 to 5/-, 1935 Jubilee set (4) m.m., 1938-43 set (13) m.m., 1948 set (12) u.m., etc. S.t.c.£750. (c.115) 80.
172	<b>Greece</b> ; 1927-35 set (missing 4d) m.m. (25d with crease), 1950 Battle of Crete, UPU, and 1951 St. Paul set (4) m.m. Cat.£849. .. .. 70.
173	<b>Heligoland</b> ; 1867-75 m.m. selection, some faults and heavy mounts. Probably reprints. (14) 15.
174	--; reprint of 1875-90 3pf in u.m. strip/sheet of ten with margins. .. .. 15.
175	<b>Indian States; Jaipur</b> ; 1932-46 "POSTAGE" ¾a and 1a each in u.m. upper-left corner marginal block of ten (small fault on reverse of one of 1a). SG 59-60, cat.£320. 60.

The Auction Venue is 650 metres West of our Shop, on Ferry Road. It has its own car park.

The bar (upstairs) is open 6-10pm and also serves a variety of food, teas and coffees. Please note that we do not allow drinks at the viewing tables, but you are welcome to bring drinks down from the bar once the auction has started.

**A Buyer's Premium of 10% (vat-inclusive) will be added to all sale prices.**

176	<b>Ireland</b> ; 1976-2000 colln. of FDCs in five <i>An Post</i> cover albums – handwritten or label addresses 1976-77, then from 1978 standard unaddressed covers (c.320). Also an album of unused and used maximum cards 1985-99 (c.150). <input checked="" type="checkbox"/> .. .. 70.
177	<b>Israel</b> ; 1948-79 colln. in album of used, with some m.m., covers, and used postage dues. Also Palestine 1918-42 m.m. & u. (100s) <input checked="" type="checkbox"/> .. .. 30.
178	--; 1949-80 colln. of mainly m.m. in an album, the earlier without tabs. Also includes a few covers, booklets, postcards, etc. (c.1,370) <input checked="" type="checkbox"/> .. .. 40.
179	<b>Italian Colonies and Post Offices Abroad; Eritrea</b> ; 1910-29 perf. 13½ 5c block of nine, and 10c block of ten, all u.m., some weak perfs. SG 34-35, cat.£92. .. .. 15.
180	--; --; 1916-34 largely used seln. mainly of Parcel Post and Postage Due stamps. S.t.c.£223. (13, 6 pairs) .. .. 20.
181	--; <b>General Issues</b> ; 1932 Dante Air 50c to 10l, each in f.u. vertical strip of five (7/70 strip split), cancels not guaranteed. SG 30-35 cat.£550. .. .. 40.
182	--; <b>Somalia</b> ; 1950 Parcel Post 3c in block of 40 (= 20 pairs) u.m. with margins. SG P256, cat.£11½ per pair = £230. .. .. 15.
183	<b>Jamaica</b> ; 1860-1905 stockleaf of mostly used, sorted by watermark and inc. several better values, the condition mainly good/fine but a few poorer. S.t.c.£660. (49) .. 50.
184	--; 1938-52 defin set (missing 1951 ½d, 1d, 1952 3d) l.m.m./m.m. (Cat. c.£136 for u.m.) 20.
185	<b>Kenya, Uganda, and Tanganyika</b> ; 1890-1953 attractive m. & u. seln. on stockleaf with British East Africa, East Africa and Uganda with 1904-7 1r, 2r m.m. (both top marginal with serial nos.), 1907-08 set (9) m.m., Kenya and Uganda, and KUT with 1938-54 set (20) mixed m./u., etc. S.t.c.£760. (c.140) .. .. 90.
186	<b>Luxembourg</b> ; 1932 Ermesinde (4 sets of 5 m.m.), 1951 United Europe set (6) m.m., and a few others. Cat.£600. .. .. 35.
187	<b>Malaya</b> ; bundle of airmail covers etc. late-1940s/early-1950s, much Singapore to UK, often with letter still inside (c.90). Also a packet of used Malaya of same period (100s) <input checked="" type="checkbox"/> 20.
188	<b>Malta</b> ; 1885-1968 m. & u. on mixed pages inc. 1938-43 defin set (21 - one set u.m., one set m.m.), 1948-53 opt. set (21) u.m., 1956-58 set (17) u.m., etc. (c.290) .. £100.
189	--; 1938-43 defin 1½d slate-black with the “broken cross” variety m.m. (one short perf at left). SG 220ba (cat.£80 for u.m.). Also 2d slate-black with variety at king's hair l.m.m. 20.
190	<b>Mauritius</b> ; 1858-1938 stockleaf of mainly defines m.m. with many medium values. Mainly good/fine. S.t.c.£400. (64) .. .. 50.
191	<b>Monaco</b> ; 1951 overprinted Red Cross sheet of four fourblocks, imperforate, mounted mint (hinged at top, with couple of very small thins where hinges removed). SG MS459 cat.£550. 50.
192	<b>Morocco Agencies</b> ; 1898-1905 m.m. collection on a few pages, with 1898 (local opt.) 10c to 1p, 1898 (London) set (8), 1903 set (missing 5c), 1905 set (7). (27) .. 90.
193	--; <b>Spanish Currency</b> ; 1937-52 25c u.m. quarter sheet (6 x 10), SG 168 cat.£120. 20.
194	<b>Netherlands</b> ; 1852-1980 mainly used colln. in home-made printed album (well made and bound). Includes numerous charity sets. (100s) <input checked="" type="checkbox"/> .. .. 70.
195	--; 1923-46 m.m. and used colln. on pages with better values throughout inc. charity issues, interrupted perfs, etc. Has a little duplication and some spots of toning (though most are fine), S.t.c.£1,750. (c.600+) .. .. 80.
196	--; 1942 Netherlands Legion set of two miniature sheets mounted mint. Couple of marginal creases, and 7½c sheet ever so slightly toned at left. SG MS569a-b cat.£340. .. 30.
197	--; 1973-2000 (a few earlier) dealer's stock of mainly u.m. sets on cards, all in flight case. (100s) <input checked="" type="checkbox"/> .. .. 40.
198	--; 1981-85 range of sets in u.m. fourblocks on two stockleaves. S.t.c.£280. (87 blocks) 24.
199	--; 1982-2001 collection of presentation packs with u.m. sets. (c.110) <input checked="" type="checkbox"/> .. 40.
200	--; four different albums and some loose pages, with m. & u. from 1946-98. (100s) <input checked="" type="checkbox"/> 35.

Remember the Buy or Bid Sale, which runs from 5pm until 5 minutes after the main auction finishes - you can buy items outright at the “buy” price, or place a bid at or above the “upset” price.



201	<b>Netherlands Antilles</b> ; 1950-82 m.m./u.m. collection in Davo printed album. Many complete sets. (c.300, 9 m.s., 4 panes) <input checked="" type="checkbox"/>	..	..	..	..	30.
202	<b>New Zealand</b> ; 1920-92 used colln. in Davo album (pages from 1855), reasonable spread from 1935 onwards. (100s) <input checked="" type="checkbox"/>	..	..	..	..	30.
203	-- 1931-35 Air 3d perf. 14 x 15 l.m.m., centred slightly to left. SG 548a, cat.£130.					30.
204	--; 1855-2002 used colln. in two-volume SG printed albums. Also some officials, Life Insurance, etc. Most held by photocorners. (100s) <input checked="" type="checkbox"/>	..	..	..	..	30.
205	<b>Nigeria</b> ; useful mix on stockleaf, more mint than used, of Lagos (25, with QV and KE7 both to 1/- m.), Oil Rivers (3), Niger Coast (11), N.Nigeria (38, inc. QV to 1/- m., KE7 odds to 2/6 m., badly damaged 10/- u., , KG5 2/6 heavy u.), and S.Nigeria (42, with KE7 to 1/- m., KG5 to 2/6 m.). S.t.c.£1,150.	..	..	..	..	£100.
206	--; 1914-53 m. & u. seln. on stockleaf inc. KG5 values to 2/6, KG6 dupl. m. & u. to 5/-, etc. S.t.c.£486. (c.90)	..	..	..	..	40.
207	<b>Norway</b> ; 1855-2000 used collection on pages. Starts with 1855 4sk f.u. with four good margins, then moderate other early inc. Posthorns, 1878 Oscar set (3), through to a fair range of modern commercially used. (100s) <input checked="" type="checkbox"/>	..	..	..	..	70.
208	<b>Nyasaland</b> ; 1891-1953 m. & u. seln. on stockleaves inc. BCA opt values to 8d, KE7 to 6d, KG5 to 2/-, 1935 Jubilee set m.m., KG6 values to 5/- m.m., etc. S.t.c.£471. (93)					50.
209	<b>Poland</b> ; 1918-2006 collection of mint and used stamps in three Schaubek printed albums, with many better sets in earlier period (some mixed m./u.). Includes 1925 45g (SG 251) m.m., 1925 Air set u.m., and German Occupation issues m. & u. From 1944 onwards many better inc. 1944 Heroes set m.m., 1z used, 1945 Revolt 5z m.m., 1945 Liberation opt. set (10) m.m., and others cat. in pounds in post-WW2 period, continuing fairly complete with 2000 onwards more sparse. Also includes Upper Silesia, East Silesia, Danzig Polish PO. Finally officials and postage dues on loose pages. (1,000s) <input checked="" type="checkbox"/>	..	..	..	..	£300.
210	--; 1919-2005 m. & u. colln. on printed pages in 7 binders of polypockets, all in a large heavy carton. Includes various WW2 Exiled Government, but majority is post-war. Some pages out of order (pages may not be complete). (1,000s) [1a]	..	..	..	..	70.
211	--; 1928-2005 m. & u. collection of miniature sheets in Schaubek album with better e.g. 1928 Warsaw Ex. m.m. (tone spot), 1938 Warsaw Ex. used, 1948 Culture u.m., and so on. (c.125) <input checked="" type="checkbox"/>	..	..	..	..	£200.
212	--; <b>Exiled Government in London</b> ; pages with 1941 and 1943 sets m.m., 1944 Monte Cassino set m.m. & u. Also two postcards (of Cambridge) sent registered to PO Box, each with four stamps of 1943 set and various postal markings, and others.	..	..	..	..	50.
213	<b>Rhodesias</b> ; 1892-1978 m. & u. range on stockleaves, with Rhodesia 1892-1913 inc. 1892-93 10/- with sheet wmk. m.m., S.Rhodesia 1924-53, N.Rhodesia 1925-53 inc. 1938 values to 10/- m.m., and Rhodesia 1965-78 with sets/part sets. S.t.c. (2014 cat.) £1,350. (c.420)	..	..	..	..	£120.
214	<b>Romania</b> ; 1906-2005 m. & u. collection on printed pages in three large binders (some pages out of order – may be incomplete). Also a Lighthouse album of U.N. and a binder of various. (Many 100s) <input checked="" type="checkbox"/>	..	..	..	..	40.
215	<b>Saint Helena</b> ; 1864-1953 seln. of mostly m.m. on stockleaves inc. surcharged QV 1d imperf (no gum), five perforated QV surcharges, KE7 values to 8d m.m./u., KG5 to 1/- m.m., 1935 Jubilee set m.m., etc. Also Tristan da Cunha 1952 to 1/- u.m. S.t.c. (2014) £623. (c.80)	..	..	..	..	70.
216	<b>San Marino</b> ; 1948 Air surcharge 200l u.m. (SG 373 cat.£80), 1949 Garibaldi air set (5) u.m. (£26), 1950 air Views short set to 250l plus recess 500l m.m. (£630), and 1952 Columbus set (missing air 200l) l.m.m. (£240).	..	..	..	..	80.

Material accepted for future sales – please make an appointment if you would like to discuss your lots.

*A Buyer's Premium of 10% (vat-inclusive) will be added to all sale prices.*

217	<b>Sierra Leone</b> ; 1876-1949 mint (and some used) seln. on stockleaves with QV to 1/- m.m., KE7 to 2/- m.m., KG5 to 5/- m.m., KG6 values to £1 m.m. or u. S.t.c.£795. (c.140)	80.
218	<b>Somaliland</b> ; 1903-49 mint selection on stockleaf with various defin part sets m.m. etc. S.t.c.£285. (84) .. .. .	30.
219	<b>South Africa; Cape of Good Hope</b> ; 1855-64 set of four Triangulars good/fine used with two to three margins, in presentation box. <input checked="" type="checkbox"/> .. .. .	70.
220	--; --; 1863-1902 seln. of m. or u. on stockcard inc. Triangular 4d f.u. and 6d average u., and later values to 1/- (49). Also a few Natal 1861-1908 with QV inc. opts/surcharges, KE7 to 2/6. (47).. .. .	60.
221	--; <b>Orange Free State</b> ; 1868-1905 seln. of m. & u. on stockleaf with part sets, overprints, surcharges, and KE7 to 1/-. S.t.c.£404. (58) .. .. .	40.
222	--; <b>Transvaal</b> ; 1878-1905 seln. of m. & u. on stockleaf with values from Second Republic m. & u. to 10/-, etc. S.t.c.£600 but this may include reprints. (c.95) .. .. .	30.
223	<b>South Africa</b> ; 1910-49 m. & u. selection on stockleaves inc. some S.W.A. (c.220)	15.
224	<b>Southern Nigeria</b> ; 1912 2/- booklet with complete contents, stapled at right. The stamp panes are very fine, with just some print offset on the gum of the last pane. Cover is moderate, showing a bit of rubbing, and a crease at upper-left corner of front cover. Scarce in any condition, this one, while imperfect, is above most. SG SB5, cat.£2,000.	£400.
225	<b>Southern Rhodesia</b> ; 1931-37 set (15) fine mint (all u.m. except 5/- which is l.m.m.). SG 15-27 cat.£160. .. .. .	50.
226	--; 1924-64 two stockleaves of m. & u. odds inc. some better values. S.t.c.£300 (a couple of KG5 5/- fiscally used counted at £5 each). (83) .. .. .	20.
227	--; 1937 definitives - five sets of 13, all appear good/fine used. Cat.£115. ..	20.
228	<b>Spain</b> ; 1946-84 colln. in two stockbooks, mint and used inc. many sets, some decent medium values (especially earlier), some dupl. (1,000+). Also Spain 1851-c.1948 dupl. accum. on pages, mainly used (c.460) <input checked="" type="checkbox"/> .. .. .	40.
229	<b>Sudan</b> ; 1897-1951 m. & u. seln. on stockleaves inc. 1951 set (17) m.m., other sets and part sets. S.t.c.£562. (130) .. .. .	60.
230	<b>Swaziland</b> ; 1933-53 m. (and a few u.) on stockleaf with defin part sets and commem sets. S.t.c.£130. (52) .. .. .	15.
231	<b>Sweden</b> ; 1858-2000 used collection on pages, starting with a range of early issues inc. 1858-72 5ø, 12ø, 24ø, 30ø, various Ring Type, thereafter less value but a good general colln. of mainly commercially used. (100s) <input checked="" type="checkbox"/> .. .. .	50.
232	--; 1949-77 u.m. lot on stockleaves with some duplication. Often in sets and inc. various booklets or panes. (100s) .. .. .	50.
233	--; a generally similar lot but with more in defines, less in panes. S.t.c.£780. ..	30.
234	<b>Switzerland</b> ; 1862-1978 colln. in album of used, with some m.m., Pro Juventute 1913-90 used, National Fête and Pro Patria used, postage dues used, and International Organisations m.m. & u. Also an album of dupl. used, and a binder of FDCs 1988-89 with some later. (100s, c.65 covers). <input checked="" type="checkbox"/> .. .. .	40.
235	--; five approval books of m. & u. inc. some better sets. Vendor states remainder PTSA €1,000+. (100s) <input checked="" type="checkbox"/> .. .. .	40.
236	--; <b>Pro Juventute</b> ; 1949-67 dupl. m. & u. sets and odds on two stockleaves. S.t.c. £930. (c.470, 2 m.s.) .. .. .	50.
237	--; <b>International Organisations; United Nations</b> ; 1950 overprint set (20) l.m.m./m.m. (SG LU1-20, cat.£700 for u.m.), and seven others. .. .. .	60.
238	<b>Tibet</b> ; 1933-60 ½t orange imperf sheet of 12 fine unused, appears genuine. Also 1911 3p surcharge m.m., and four others. .. .. .	60.

Our Facebook page often has a few illustrations and further descriptions and comments, extra to what is in the catalogue. Just search for "Robert Murray Stamp Shop" . . . feel free to "like" us !

239	<b>Tristan da Cunha</b> ; 1952-82 mint collection in stockalbum inc. 1952 defin set m.m., 1954 defines (2 l.m.m. sets), 1960 set l.m.m. (high values u.m.), 1961 set l.m.m., 1965 set u.m., and most commems and later defines. Some dupl. (100s) <input checked="" type="checkbox"/>	..	..	70.
240	<b>Turks and Caicos Islands</b> ; 1938-67 mint seln. on stockleaf inc. 1950 set (13) l.m.m. (4d poorer), 1957-60 set (15) m.m., etc. S.t.c.£180. (45)	..	..	30.
241	<b>Tuva</b> ; 1926 set (10), 1927 surcharges set (4), 1927 set (14, two or three with faults), and 1932 surcharges set (6), all m.m. Cat.£239. Also two used.	..	..	50.
242	<b>U.S.S.R./Russian Area</b> ; small box of similar illustrated covers with a variety of stamps, some Soviet Union overprinted, others local productions etc., much from Ukraine 1992/93, and some with Soviet period stamps. (c.150) <input checked="" type="checkbox"/>	..	..	20.
243	<b>United Nations; New York</b> ; six printed albums (in German) of Flag Series stamps on UNICEF FDCs. (100s) <input checked="" type="checkbox"/>	..	..	20.
244	<b>United States of America</b> ; 1857-61 3c brown-rose type I (with upper and lower frame lines) in fine and very attractive fourblock. Nice condition for such an item, with fine and complete gum, outer perforations generally good though less regular at top, perforations within block strengthened at centre right and a bit weaker at centre top and centre foot. A little adhesion at foot also. [Scan of reverse available on request.] SG27, cat.£10,000 as singles. Scott 25, cat. \$16,000 as block This lot carries a reserve price of £1,500.	..	..	£1,700.
245	--; 1922-32 2c carmine from rotary press, perf.10, design measuring 19¾ x 22¼mm, in four-block with full but disturbed gum. SG 599, cat.£1,100 as singles, Scott 595 s.t.c.\$1,900.	..	..	£150.
246	<b>Vatican City</b> ; 1949-52 m.m. seln. on pages inc. 1952 Stamp Centenary m.s. S.t.c.£620. (18, 1 m.s.)	..	..	35.
247	<b>Zambia</b> ; 1964-94 collection of mostly used on stockleaves in a binder, and collection of FDCs 1964-89 in cover album. (100s stamps, c.80 FDCs) <input checked="" type="checkbox"/>	..	..	30.

## United Kingdom

### 1840 Penny Blacks

248	Selection of 24 used Penny Blacks, mainly good/fine, and generally with three or four margins (some with less), a few faults here and there. From a dealer's stock, with total retail price of £1,660.	..	..	£750.
249	Selection of ten used Penny Blacks from a dealer's stock, identified as being one each from plates 1A, 1B, 2, 3, 4, 5, 6, 7, 8, and 9. Mainly 3 or 4 margins, some small faults. Priced retail at total £620.	..	..	£300.
250	Selection of ten used Penny Blacks from a dealer's stock, identified as being one each from plates 1A, 1B, 2, 3, 4, 5, 6, 7, 8, and 9. Mainly 2 or 3 margins. Priced retail at total £455.	..	..	£200.
251	Five used Penny Blacks, all four-margins but with small faults. Stated to be plates 1B, 3, 4, 5, and 9.	..	..	£150.
252	Five used Penny Blacks from five different plates (stated to be 1B, 4, 5, 6, and 9), each with four margins but with minor faults (thins, creases).	..	..	£150.
253	Four used Penny Blacks from four different plates (stated 1B, 4, 5, and 6), each with four margins but small faults.	..	..	£100.
254	Selection of nine used Penny Blacks from a dealer's stock, identified as plates 1B, 3, 4, 5, 6, 7, 8, 9, and 10. Generally good/fine with about 3 or 3½ margins. Priced retail at £635.	..	..	£260.
255	Five medium/poorer used Penny Blacks, from 1 to 4 margins but some faults.	..	..	80.
256	Plate 1A BE with four good margins, quite light red MC. Some remains on reverse.	..	..	80.

Email bids are acknowledged within 24 hours (1 hour on auction day). If no reply from us, please resend.

***A Buyer's Premium of 10% (vat-inclusive) will be added to all sale prices.***

**United Kingdom, continued.****1840 Penny Blacks, continued.**

257	Plate 1A QB with four small to good margins, red MC, clearly worn plate. Couple of minor thins. .. .. .	40.
258	Plate 1B BD with four margins (mainly medium, but virtually touching at upper-right), red MC. .. .. .	50.
259	Plate 1B GH with four margins (wide at top and right, medium to good at left and foot) with smudged red MC on small piece. .. .. .	50.
260	Plate 1B JC with four margins (small to good), distinct red MC, tiny surface chip at top (and large shallow thin ?). .. .. .	40.
261	Plate 1B JE with four margins (medium to good), unclear red MC. .. .. .	70.
262	Plate 1B NH with four margins (close at left, others good), clear red MC. Has had crease ironed out, giving the stamp surface a flat appearance. .. .. .	40.
263	Plate 2 DB with four margins (medium to good at left and foot, others close to medium), tied to piece by black MC. .. .. .	50.
264	Plate 2 EF with four margins (close at upper-left, others medium), red MC, very small thin.	50.
265	Plate 2 FB with four margins (fair at right, large at top and left, lower margins closer and uneven), red MC. .. .. .	60.
266	Plate 2 JK fine used with neat red MC, almost 4 margins (small fault at upper-right corner).	40.
267	Plate 2 KA with four quite even margins, red MC. .. .. .	60.
268	Plate 2 PA with four margins (very large at right, wafer-thin at right, others good), red MC. Shows distinctive doubled "P". Suspected slight thin may just be impregnated gum.	50.
269	Plate 3 OJ with four margins (good, virtually even but for little chip at top-right), faint red MC. Small stain near centre. .. .. .	70.
270	Plate 4 BC with four margins (mainly medium to good, narrower at foot on both sides), red MC. .. .. .	50.
271	Plate 4 OK with four medium to good margins, red MC. Fairly large thins but an attractive stamp. .. .. .	40.
272	Plate 4 QF with four margins (medium, even), dark red MC. .. .. .	60.
273	Plate 4 QL with four margins (medium to good), black MC, tiny corner crease...	60.
274	Plate 4 RF with almost four margins (narrow to touching at top, medium at left, others good/wide) tied by black MC to piece with boxed "5" to left. ("Dundee" pencilled on reverse.)	40.
275	Plate 4 TD with four medium to good margins, very blurred red MC. .. .. .	60.
276	Plate 5 HK with 3 good to wide margins, a couple of faults, but an excellent strong red MC.	30.
277	Plate 5 KJ with four margins (quite even, medium to good), red MC quite smudged.	60.
278	Plate 5 MA with four margins (medium to good), blurred red MC. .. .. .	60.
279	Plate 5 TF with four margins (medium to good, quite even), red MC. .. .. .	70.
280	Plate 6 FD with four margins (generally medium, very wide at left, closer just at lower-right), quite faint red MC. .. .. .	70.
281	Plate 6 FJ with four decent margins, vertical crease near top, red MC. .. .. .	40.
282	Plate 7 BK with four margins (narrow to good), red MC. .. .. .	50.
283	Plate 7 HG with four margins (generally quite generous and even, but comes close at top of left side), red MC. .. .. .	70.
284	Plate 7 LC with four margins (medium at foot, others a little wider), red MC. .. .. .	70.
285	Plate 8 EJ with four margins with four very regular margins, black MC. Couple of tone spots visible from back. .. .. .	60.
286	Plate 8 OD with four medium to good margins, indistinct black MC. Slight discolouration at lower right. .. .. .	50.
287	Plate 8 PE with four margins (very narrow at foot, others good and even), red MC.	60.

Our Facebook page often has a few illustrations and further descriptions and comments, extra to what is in the catalogue. Just search for "Robert Murray Stamp Shop" . . . feel free to "like" us !



**United Kingdom, continued.****1840 Penny Blacks, continued.**

288	Plate 9 NF (although "O" flaw not apparent) with four margins (close to medium at right and foot, large at top and left), central black MC, flattened crease at right. ..	40.
289	Plate 10 HF with four margins (two very tight, two small to medium) with black MC on piece (only just tied). .. .. .	50.
290	Unplated (possibly 5 or 6) OA with four margins (mixed, from wide to almost touching), flattened crease. .. .. .	30.
291	1840 Penny Black FD and 1841 Penny Red imperf. FD matched pair. The black is 3½ margin, black MC, thinned on reverse. The red is four margins but creased. ..	30.
292	1840 Penny Black LI fine used on large piece. Stamp has 3½ margins, black MC, partial Towcester c.d.s. on the piece. .. .. .	30.
293	1840 Penny Black NI g./f.u. with 3½ margins, red MC. .. .. .	26.

➡ See also Scottish Postal History, UK Postal History.

**1840 Twopenny Blues**

294	Selection of six used Twopenny Blues, with 2 to 3½ margins, some with faults to varying degrees, all with black MC cancels. .. .. .	£180.
295	Twopence Blue IB fine used with four margins (good at sides, medium at top and foot), slightly smudged red MC. .. .. .	70.
296	Twopence Blue HB g./f.u. with four margins (narrow to medium), smudged black MC. ..	60.
297	Twopence Blue JC fine used with just four margins (close to medium), black MC, tiny thin at top. .. .. .	50.
298	Twopence Blue LD f.u. with only just four margins (good at top and left, others close or almost touching), black MC. .. .. .	50.
299	Twopence Blue JL fine used with 3½ margins (mainly medium to large, but cut-into at upper-right), neat black MC. .. .. .	50.

**Later Line-Engraved Issues**

300	1841 Penny Red imperforates used selection on several stockleaves with MC cancels (34), 1844 cancels (253), number in MC cancels (5), blue numeral cancels (8), and one uncanceled on piece. Range of qualities across the board from fairly poor to fine. ..	£100.
301	1841 Penny Red imperf seln. of 46 all with black MC cancels, mainly 3-4 margins. ..	50.
302	1841 Penny Red imperf. on blued paper, with inverted watermark, fine used with 3½ margins. SG 8Wi cat.£400. .. .. .	30.
303	1841 Twopence Blue imperforate used selection on several stockleaves comprising those with MC cancels (49) and with numeral cancels (c.140), in varied condition but inc. many fair/good/fine. .. .. .	£100.
304	1854-61 priced stock on stockleaves of Penny Red Stars (120 of 1854-57 issues, and c.240 of 1856-61 issues) and Twopence Blue Stars (26). Mainly sound/good/fine. Total PTSA c.£900. .. .. .	£120.
305	1870-79 Halfpenny plates priced dealer's stock between 8 and 18 of each plate (except 9). Also 1870-74 1½d plates 1 (5) and 3 (5). Mainly sound/good/fine used. PTSA c.£1,000. (110) .. .. .	80.
306	1870-79 Halfpenny plate 9 fair used - couple of short perfs, small area marked, decent cancel. Cat.£850. .. .. .	60.
307	1864-79 collection of 150 different Penny Red plate numbers (i.e. missing 77 and 225) in stockbook, all used and Mainly good, though some with faults. ☑ .. .. .	80.

Our Facebook page often has a few illustrations and further descriptions and comments, extra to what is in the catalogue. Just search for "Robert Murray Stamp Shop" . . . feel free to "like" us !

***A Buyer's Premium of 10% (vat-inclusive) will be added to all sale prices.***

**United Kingdom, continued.****Later Line-Engraved Issues, continued.**

308	1864-79 Penny Red plates dealer's stock arranged on stockleaves, with between 3 and 7 of each plate from 71 to 73 and 80 to 224 (excluding 77) (only 1 of plate 82). Mainly sound/good/fine used. (c.250) Also plate 89 misperforated, and plate 158 m.m. ..	50.
309	1864-79 Penny Red plate 225 good used. Sound, with moderate numeral cancel, good perfs but tone spots on a number of perf. teeth. Cat.£800. ..	80.
310	1858-76 priced dealer's stock of used Twopence Blue plates 7 (9), 8 (12), 9 (11), 12 (4), 13 (11), 14 (9), and 15 (11), mainly good/fine. PTSA c.£400+ ..	50.
311	1847-54 Embossed 1/- fine used with particularly good margins - a decent margin at foot and very wide on other three sides. Reasonable London "14" cancel. SG 54 cat.£1,000. ..	£120.
312	1847-54 Embossed 6d cut-square but cut-into at foot, sound used, plus two of 1/- poor/average used cut-square. Also further poorer used examples of 6d (5). ..	70.
313	1855-57 No Corner Letters used seln. comprising 4d (14), 6d (16), and 1/- (3), poor to good quality. ..	40.
314	1862-64 Small White Corner Letters used selection comprising 3d (1), 4d (9), 6d (7), 9d (3), and 1/- (3), in poor to good grades. ..	40.
315	1865-67 Large White Corner Letters used selection comprising 3d (1), 4d (41), 6d (5), 1/- (3), and 1867-80 3d (18), 6d (18), 9d (4), 10 (1), 1/- (7), 2/- (2), plus 1872-73 6d brown (6), 6d grey (2). Mixed quality poor to good. ..	£100.
316	1873-80 Large Coloured Corner Letters used selection comprising 2½d mauve (55), 2½d blue (16), 3d (32), 4d green (2), 6d (7), 8d (3), 1/- (15), plus 1880-83 2½d (26), 3d (4), 3d surch. (3), 4d (10), 6d (5), 6d surch. (3), and 1/- (3). Poor to good grades. ..	£100.
317	1880-1900 used stock on stockleaves, often with a few of each value, generally about average/good sound condition, and with many better values. Includes for example 1880-81 2d (5), 5d (6), 1881 1d lilac with 14 dots (28), 1883-84 4d (5), 5d (5), 6d (5), 9d (1), 1/- (4), 1887-1900 (6 sets of 14), etc. (100s) ..	80.
318	1883-84 white paper 2/6 and 10/- mint. The 2/6 fine and fresh right marginal and unhinged, though small bit of adherence on gum and a slightly short perf, plus heavy mount on margin. The 10/- looks fine but has had its upper margin turned down behind, where it is stuck to the stamp's gum. SG 178, 183, cat.£600 and £2,250. ..	£170.
319	1883-84 2/6 (5), 5/- (3), and 10/- (1), fair/average used, some smallish faults. ..	50.
320	1887-92 £1 green very fine mint, lower-right corner marginal. Fresh and well centred. The stamp has not been hinged, but has a small area of paper adhesion on the gum at left, and a slip of gummed paper stuck to the gum of the margin at foot. Tiny colour smudge at centre foot. A very attractive example. SG 212 cat.£4,000. ..	£1,000.
321	1887-92 £1 green good sound used with a couple of oval cancels. Decent appearance, has been reperforated at top (not too obvious). SG 212 cat.£800. ..	£100.
322	1887-92 £1 green used. Reasonable appearance with two oval cancels (and small parts of two others), partly reperforated, diagonal crease to left. SG 212 cat.£800. ..	70.
323	1902-13 2/6 (5), 5/- (5), and 10/- (1) fair/average/good used, the best being the 10/- which is quite decent g./f.u. with c.d.s. (small ink mark on reverse). ..	90.
324	1902-13 £1 dull blue-green fine used with light oval cancels. Centred high, the reverse has some original paper adherence, and a couple of light creases. SG 266 cat.£825. ..	£100.
325	1902-10 KE7 £1 dull blue-green good sound used with two c.d.s. cancels, a bit smudged to right. SG 266 cat.£825. ..	£100.
326	1913-34 used stock of Seahorses comprising 1913-19 2/6 (39), 5/- (18), 10/- (5), 1934 2/6 (12), 5/- (9), and 10/- (6). Generally average/sound used. PTSA c.£1,300. ..	£150.

Alternative bids, and overall spending limits, are acceptable. Advice available if required !

**United Kingdom, continued.**

- 327 1961 POSB 2½d horizontal pair u.m., the right-hand stamp with the red missing from the two-thirds at right. Colour registration is also slightly out, and some pen-lines across both. Very visual. .. .. 70.
- 328 **Miniature Sheets**; 2004-17 u.m. colln. in album, face value c.£420. (c.105) ☒ ▲ £250.
- 329 **Booklets**; 1924 2/- booklet complete and very fine, with Imperial advert on front cover. The stamp panes are very fine - the first (with labels) having good perforations just slightly trimmed at foot, second 1½d pane trimmed at foot, 1d pane with good perfs (slightly trimmed at top), and ½d pane with short corner at foot. All watermarks upright. Cover is fine and fresh with slightest edge rubbing and the stitching loose at very top. SG BB12 (edition 16) cat.£900. .. .. £240.
- 330 --; 1924 3/- complete and fine, with Bourneville advert on front cover. Stamp panes fine with average perfs and all watermarks inverted except ½d. Cover is fine and fresh with slight edge rubbing (more-so at lower-right corner). SG BB24 (edition 69) cat.£550. £120.
- 331 --; small album of late pre-decimal and early decimal booklets, light duplication, decimal face value c.£25. Also a few Channel Is./I.o.M. (c.90) ☒ .. .. 30.
- 332 **Smilers Sheets**; 2001 Christmas sheet (10 x 1<sup>st</sup>) with Consignia imprint, u.m. but with scuff at upper-right. SG LS3a cat.£625. .. .. 15.
- 333 **Presentation Pack Collections**; 1992-2018 (June) collection in seven Royal Mail albums with commems, defin, and country issues. Face value c.£1,700. (c.410 packs) ☒ £1,000.
- 334 --; 1997-2002 in two albums. Face value c.£190. (c.78) ☒ ▲ .. .. £110.
- 335 --; 1975-2005 bundle of packs, face c.£77. ☒ ▲ .. .. 45.
- 336 --; **Year Books**; 1985, 1990, 1992-2000, plus three extra 1993 and one extra 1995. (15 books). Face value c.£200. ☒ .. .. £120.
- 337 --; --; 200-02 and a few other items. Face value c.£130. ☒ .. .. 75.
- 338 **UK Postage Material**; booklets, presentation packs, etc. Vendor states face value to be c.£330. Also 14 airmails. ☒ ▲ .. .. £190.
- 339 --; folder with 200 1<sup>st</sup> Class u.m. in blocks, booklets, etc. Face value £134. ☒ ▲ 80.
- 340 **First Day Cover Collections**; 2010-2018 (July) standard PO covers in 2 Royal Mail albums and another binder. Also includes some earlier FDCs and other world covers. (c.155 FDCs of 2010-18 period). ☒ .. .. £300.
- 341 --; 1999-2007 collection of commem FDCs in five Royal Mail cover albums where the general pattern is at least two of each (with alternative cancel and another appropriate cancel) up to 2006 Ice Age, then single FDCs only with appropriate cancels. Also another album with 1986 Doomsday 17p (81 covers with 81 different FDI cancels), 1984 Channel Tunnel gift pack, and 2000 Stamp Show Smilers sheets with two different Earls Court cancels. ☒ .. .. £100.
- 342 --; 1952-2001 in large heavy carton in seven various albums with slipcases. Mostly standard Bureau covers from 1979 onwards, with both std./alternative cancels from 1986. Also an album of defin/PSB pane FDCs, and another of country issues. (c.580) [1a] .. 60.
- 343 --; 1948-2003 in 2 double-size and 12 single-size albums, and loose. Consists of defin, commems, country, PSB panes, etc., mostly standard Bureau covers from 1979 onwards, mixed before, light duplication. (c.660) ☒ .. .. 60.
- 344 --; 2012 Olympic Winners sheetlets of six (29), Paralympic Winners sheetlets of two (34), and min.sheets (3), all in special binder. All PO covers, mainly Olympic Park cancels. ☒ 60.
- 345 --; 1960-2004 colln. in five assorted albums, a tray, and loose – mixture of cover types, cancels (Bureau, FDI, other specials), some covers just with single stamps. (c.340) ☒ 40.

Remember the Buy or Bid Sale, which runs from 5pm until 5 minutes after the main auction finishes - you can buy items outright at the “buy” price, or place a bid at or above the “upset” price.

*A Buyer's Premium of 10% (vat-inclusive) will be added to all sale prices.*

**United Kingdom, continued.**

- 346 **Philatelic Covers**; 1973-2008 seln. of covers with a Dundee (2), Pittenweem (3), or Basil Spence (1) theme, each signed by the designer. .. .. 10.
- 347 **Philatelic Numismatic Covers**; 2002 Commonwealth Games Royal Mail cover with the four different £2 coins. .. .. 90.
- 348 --; 2009 Kew Gardens Royal Mail cover with Kew 50p coin. .. .. £120.
- 349 --; 2003-10 bundle of Benham FDCs all with autographs and non-UK coins/medallions etc. (26) ☒ .. .. 50.
- 350 --; 2005-10 a similar lot. (25) ☒ .. .. 50.
- 351 **PHQ Postcards**; 1973-2000 in six albums, mostly used with typed or handwritten addresses, and a loose quantity which seem to be mostly unused. Includes better with 1973 Royal Wedding unused and used (handwritten) and 1974 Tree used (unaddressed). (100s) ☒ 30.
- 352 **Scotland Covers and Postal History**; 1840 (21 Oct.) entire Ayr to Edinburgh with Penny Black HE (3½ margins, unplated) tied by smudged red MC. Some ageing on cover. 60.
- 353 **U.K. Covers and Postal History**; 1765-1856 album of pre-stamp and unstamped covers showing quite a variety of markings and areas. Includes 1832 with Taunton Penny Post with "No.6" to side, 1808 with v.fine Portsoy circular mileage mark, some to or from foreign addresses. (38) ☒ .. .. 70.
- 354 --; 1841 (26 Feb.) part cover to London with Penny Black plate 4 (2½ margins) tied by red MC, Some faults. .. .. 30.
- 355 --; 1845-54 six covers (3 to Edinburgh, 3 to Kendal) each with two of 1841 Twopence Blue imperfs (2 with pairs, 4 with two singles). .. .. 50.
- 356 --; 1844-88 album of mixed covers inc. many with Penny Reds (mixed postmarks), and inc. attractive 1874 cover with 2d blue affixed to 1d pink envelope (company imprint on flap). Also inc. Victoria (Australia) to UK cover with 6d adhesive (creased) and Spain 1858 cover. (50) ☒ .. .. 90.
- 357 --; 1860 cover Newport Salop to Cologne with 1855-57 6d, and two 1872 covers to Germany each with 1867-80 3d. .. .. 30.
- 358 --; 1879 cover Liverpool to India franked with 1873-90 8d orange (affixed sideways). A little grubby and part of back flap torn off. .. .. 30.
- 359 **Islands**; stockbook of u.m. sets from Guernsey, Jersey, and I.o.M. 1970s-90s inc. miniature sheets. (100s) ☒ .. .. 50.
- 360 **Jersey**; 1969-2012 u.m. collection of stamps and miniature sheets in four Lindner hingeless albums. Seems complete. Decimal face value c.£880. (100s) ☒ .. .. £220.
- 361 --; 1971-2006 accumulation of presentation packs and FDCs, mostly still in original Bureau envelopes as delivered. Completeness cannot be guaranteed but our impression is that it may well be complete or close to it. Face value may be in region of £500. ☒ .. .. £150.
- 362 **United Kingdom Collections and Mixed Lots**; 1840-2012 in a well-filled album with mint and used mix inc. three Penny Blacks (one is 4-margin but creased, others 2+ margins), other line-engraved inc. 1841 2d g.u. with four large margins, 1870-74 1½d plate 1 fair m.m. (small tone spots), then surface-printed mainly average u. but inc. 1880-83 3d on 3d unused (no gum), a few useful departmentals, moderate KE7-KG6, and larger numbers of modern mainly used. Many mint are stuck at the hinge. (100s) ☒ .. .. £220.
- 363 --; 1971-2002 m.m. and used collection of commems in three volumes, more complete m.m. in 1994-2002 period. Face value c.£225. ☒ ▲ .. .. £110.
- 364 --; 1840-1966 colln. in album, from Penny Black (4-margin, red MC), mixed QV-KG6 inc. a few m.m. singles/blocks (some controls), plus a few FDCs inc. 1935 Jubilee set (poor), a few reasonable early-1960s, etc. (100s) ☒ .. .. 90.

Customers can bring items along to the auction venue on the day to enter them in the Buy or Bid Sale. The best time for this is between 3pm and 5pm. We charge 25p per lot entry fee, and 10% of sales.



**United Kingdom, continued.**

- 365 --; 1997-2014 used commemoratives, mainly priced in sets, in a dealer's display stand.  
More complete in earlier period. (100s) [1a].. .. 40.
- 366 --; box with cover album of UK definitives, packet of airmail letters (c.100 mainly unopened), another  
packet of NPM cards etc., envelope of QE pre-decimal mint blocks, and a quantity of covers/  
PHQs. (100s) ☒ .. .. 30.

**THE END OF THE SALE**

© Robert Murray 2019

**PARCELS BY CARRIER – CONFIRMATION OF POLICY**

We normally send out lots to successful bidders using the appropriate Royal Mail service, and we only charge the actual cost of postage. (Occasionally there will be a small charge if there is extra insurance.) Sometimes parcel services can be had for lower prices and if a customer wants to use a different carrier this is what they should do;

- {1} Tell us this is their preference. We'll then pack the parcels and inform the dimensions and weights.
- {2} The customer should make the arrangements for the parcels to be picked up from us.
- {3} Once the delivery has been booked we should be told which company is collecting and when they can be expected.

Please note that

{A} we charge a modest packing fee of £5 for the first parcel and £2 per parcel thereafter, and {B} that we will not come in to our shop early or stay on late to meet with your carriers' collection times. Pick-ups should therefore be arranged for our business hours times.

**SCOTTISH PHILATELIC CONGRESS in PERTH**

"Congress" is coming along very soon !

The 90th Congress is to be held at the Dewars Centre, Perth on Friday 12<sup>th</sup> and Saturday 13<sup>th</sup> April 2019. If you've never been, you'll find dozens of stamp and postcard dealers from around the UK, plus an interesting stamp exhibition, information tables, and more.

The Host Society this year is the Largs & District Stamp Club, and they will provide some of the exhibition.

Robert Murray Stamp Shop will have a stand there, with some of our stock available to view and buy. If there's anything in particular you'd like us to bring along please phone or email in advance.

It may be possible for us to bring lots from this auction for successful bidders to collect. The exception is that we'll only be able to bring larger lots on the Saturday.

**VIEWING ARRANGEMENTS**

**Viewing at our Shop;** The shop will be open at the following times for viewing.

Tuesday 19<sup>th</sup> March 12 noon-4pm      Wednesday 20<sup>th</sup> March 2pm-8pm

Thursday 21<sup>st</sup> March 10am-6pm      Saturday 23<sup>rd</sup> March 12 noon-6pm

Viewing by appointment available at some other times (e.g. the Friday)

**Viewing at the Auction Venue;** Monday 25<sup>th</sup> March;

Larger lots (marked "☒" in the description); on view at auction venue from 3pm: Smaller lots, on view by 4.00pm. Viewing will end at about 6.50pm.

Lots marked "[1a]" are not taken to the auction venue (see information box below).

## A U C T I O N   P R O G R A M M E

◆   3 June 2019   ◆

This date, though fairly firm, is still provisional. The publication of the auction catalogue is confirmation of the date.

### **IMPORTANT; Viewing Arrangements for “Not-To-Auction” Lots.**

This relates to all lots in this auction which have the “[1a]” symbol in their description, signifying that they will not be taken to the auction venue. It will be arranged so that these lots can be viewed at our shop premises on auction day, and that purchases can be collected that same evening.

{a} In addition to the normal viewing arrangements noted above, any lots marked “[1a]” can be viewed at our smaller shop at 1A Inverleith Gardens, on Monday 25<sup>th</sup> March from 3pm to 6.45pm. Should there be pressure on available space, viewing will be at the discretion of our staff.

{b} After purchasing and paying for any “[1a]” lots at the auction venue, customers can take their receipted invoice to our shop and pick up these lots, from 8pm until ten minutes after the last customer has been cleared through accounts.

{c} Customers can still opt to collect their lots from us later in the week during shop opening hours.

{d} There is no parking directly outside 1A, so customers will have to park a little further along Inverleith Gardens. While we can lend you a trolley, there will be no available staff to carry boxes.

### **NORMAL BIDDING STEPS**

We list here our normal bid steps for your information. This may be of help to bidders who are unable to attend the sale, as any written bids received which do not fit our normal pattern would usually be taken down to the next normal step. (We keep to these increments as much as possible, but do sometimes change if circumstances make it desirable.)

Up to £20, bids are in £1 steps.

From £20 to £30, bids are in £2 steps.

From £30 to £50, bids are in £2 or £3 steps (i.e. £30, £32, £35, £38, £40, £42, £45, £48, £50).

From £50 to £100 in £5 steps.

From £100 to £200, bids are in £10 steps.

Then £220, £240, £260, £280, £300, £320, £350, £380, £400, £420, £450, £480, £500, £550, £600, £650, £700, £750, £800, £850, £900, £950, £1,000, £1,100, £1,200, etc., and above this in 5% to 10% steps.

#### **Methods of payment accepted at auction;**

Cash (Sterling, Euro notes)

Cheque (from established customers)

Debit Card (no surcharge)

Credit Card (no surcharge)

#### **Methods of payment accepted after auction; all the above plus**

Direct bank transfer to our account (Robert Murray Stamp Shop, sort code 82-45-05, account 80371787) but please quote invoice number, and email or phone to advise us of payment, plus PayPal by arrangement (additional fee of 4% UK, 5% foreign).

**Abbreviations; a list of abbreviations and symbols used is normally included in the auction catalogue. We suggest that you keep a copy for future reference.**

m./u.m.	mounted/unmounted mint	accum.	accumulation		
l.m.m.	lightly mounted mint	colln.	collection		
g./f.u.	good/fine used	unu.	unused	seln.	selection
v.f.u.	very fine used	inc.	including	pmk.	postmark
FDC	first day cover	PSB	prestige stamp booklet	cat.	catalogue price
lvs.	album leaves	bkt.	booklet	p.stat.	postal stationery
s.t.c.	stated to catalogue (by vendor)	m.s.	miniature sheet		
S.o.W.	“Stamps of the World” catalogue	PNC	philatelic numismatic cover		
c.	circa (usually approximate quantity)	PTSA	priced to sell at		
c.d.s.	circular datestamp	[1a]	lot not being taken to auction		
▲	Smaller bid steps accepted	☑	earlier viewing of lot on auction day		

## THIS IS HOW YOU CAN BID;

**In Person.** This is a public auction, and bids are made in person at the auction in the traditional manners.

**By post.** Please use the Bid Form supplied, and send first class.

**Telephone bids** will be accepted at any time before the sale (but the earlier the better). These bids should be confirmed in writing (post or email), even if the written confirmation will not reach us until after the auction. Numbers are 0131 552 1220, or 0131 478 7021 up to about 2pm on sale day, after which use the mobile number.

A mobile number (07974 962649) can be called on the afternoon and evening of sale only. Please speak to someone – no texts, no recorded messages. If no answer, just try again (we can be busy !).

**E-mail bids** should be sent to us at **auction@stamp-shop.com** at any time from the moment you receive this catalogue until 2.45pm on Monday 25 March. Please do not e-mail bids to us after that time. Please use the format and wording used on the bid form that comes with your auction catalogue, and include your postal address. (We have a back-up email address of stamps@blueyonder.co.uk in case of problems.) We normally confirm receipt of email bids within 24 hours (not on the Sunday before the auction, and usually within one hour on the auction day). If you do not get an email confirmation from us within that time, please try again, or phone.

**Euro Currency;** We are happy to accept Euro cash payments in our shop. We normally allow the market rate rounded down to the next whole penny. For example, at the time of writing, the market rate is 0.8551, so we are allowing 85p per Euro (which is probably better than your bank will give you). You can also pay for lots in this auction by Euro banknotes (postal customers please confirm before sending). We also accept payments in our shop in Euros, and we buy some old "legacy" currencies, as well as other coins and notes.

## CREDIT CARDS

We are happy to accept MasterCard and Visa credit card payments, as well as payments by Debit Card. This facility can be used by room purchasers (who pay their accounts at the auction), by other local customers (who pay their bill in our shop), and by postal buyers.

In order to deal with postal clients, our bid forms have been designed to make space for credit or debit card instructions.

If you want your purchases charged in this way, please complete the appropriate section.

**Do not** complete these details unless you want to pay by card, **and to have the lots posted.**

**List of Prices Realised Stamps and Collectables Auction 11 February 2019**

1	400.	2	130.	3	300.	4	350.	5	90.	6	170.	7	150.	8	200.	9	260.	10	260.
11	200.	12	150.	13	65.	14	65.	15	40.	16	40.	17	55.	18	90.	19	35.	20	120.
21	220.	22	160.	23	80.	24	50.	25	45.	26	28.	27	60.	28	30.	29	90.	30	150.
31	38.	32	75.	33	60.	34	65.	35	35.	36	50.	37	110.	38	42.	39	50.	40	48.
41	20.	42	20.	43	60.	44	48.	45	26.	46	50.	47	20.	48	35.	49	1500.	50	500.
51	500.	52	350.	53	130.	54	240.	55	300.	56	240.	57	140.	58	120.	59	80.	60	80.
61	50.	62	40.	63	42.	64	140.	65	40.	66	160.	67	85.	68	35.	69	35.	70	65.
71	35.	72	180.	73	160.	74	65.	75	48.	76	80.	77	55.	78	35.	79	38.	80	150.
81	48.	82	65.	83	95.	84	170.	85	-	86	-	87	70.	88	28.	89	55.	90	40.
91	60.	92	40.	93	26.	94	65.	95	80.	96	70.	97	70.	98	150.	99	38.	100	20.
101	70.	102	38.	103	80.	104	90.	105	48.	106	70.	107	90.	108	40.	109	45.	110	-
111	22.	112	13.	113	12.	114	26.	115	65.	116	38.	117	28.	118	600.	119	24.	120	260.
121	130.	122	55.	123	85.	124	65.	125	300.	126	150.	127	150.	128	90.	129	80.	130	80.
131	95.	132	55.	133	26.	134	190.	135	60.	136	300.	137	300.	138	240.	139	160.	140	100.
141	70.	142	55.	143	35.	144	30.	145	30.	146	35.	147	13.	148	65.	149	24.	150	3300.
151	68.	152	100.	153	-	154	35.	155	60.	156	32.	157	32.	158	55.	159	400.	160	-
161	48.	162	35.	163	50.	164	90.	165	35.	166	45.	167	170.	168	38.	169	130.	170	65.
171	26.	172	55.	173	50.	174	70.	175	14.	176	220.	177	260.	178	45.	179	240.	180	200.
181	100.	182	40.	183	170.	184	16.	185	48.	186	38.	187	1300.	188	220.	189	1100.	190	150.
191	550.	192	65.	193	42.	194	320.	195	-	196	65.	197	40.	198	20.	199	13.	200	150.
201	140.	202	400.	203	28.	204	12.	205	75.	206	160.	207	200.	208	22.	209	80.	210	65.
211	60.	212	-	213	14.	214	65.	215	85.	216	140.	217	13.	218	420.	219	160.	220	90.
221	35.	222	130.	223	300.	224	85.	225	10.	226	65.	227	55.	228	28.	229	-	230	300.
231	70	232	80.	233	160.	234	40.	235	13.	236	60.	237	170.	238	42.	239	35.	240	130.
241	60.	242	80.	243	22.	244	24.	245	35.	246	16.	247	-	248	30.	249	35.	250	35.
251	16.	252	20.	253	42	254	-	255	-	256	22.	257	-	258	700.	259	180.	260	45.
261	17.	262	160.	263	140.	264	13.	265	65.	266	35.	267	20.	268	110.	269	32.	270	70.
271	40.	272	35.	273	65.	274	45.	275	15.	276	48.	277	160.	278	35.	279	20.	280	28.
281	450.	282	65.	283	140.	284	160.	285	80.	286	90.	287	70	288	-	289	260.	290	70.
291	42.	292	55.	293	40.	294	60.	295	30.	296	30.	297	80.	298	42.	299	120.	300	-
301	35.	302	320.	303	180.	304	150.	305	32.	306	120.	307	350.	308	75.	309	-	310	280.
311	28.	312	38.	313	20.	314	42.	315	90.	316	42.	317	140.	318	14.	319	-	320	35.
321	80.	322	-	323	70.	324	35.	325	150.	326	30.	327	60.	328	35.	329	28.	330	110.
331	140.	332	65.	333	35.	334	12.	335	-	336	55.	337	40.	338	140.	339	160.	340	50.
341	800.	342	110.	343	600.	344	480.	345	240.	346	50.	347	55.	348	150.	349	60.	350	100.
351	140.	352	100.	353	110	354	360.	355	100.	356	1300.	357	490.	358	35.	359	-	360	20.
361	16.	362	260.	363	230.	364	250.	365	860.	366	145.	367	85.	368	500.	369	320.	370	220.
371	260.	372	330.	373	300.	374	240.	375	105.	376	100.	377	90.	378	60.	379	480.	380	35.
381	16.	382	16.	383	900.	384	110.	385	150.	386	28.	387	90.	388	110.	389	15.	390	65.
391	40.	392	45.	393	-	394	70.	395	30.	396	35.	397	18.	398	780.	399	620.	400	750.
401	280.	402	280.	403	280.	404	260.	405	380.	406	220.	407	160.	408	140.	409	190.	410	260.
411	140.	412	100.	413	120.	414	220.	415	95.	416	95.	417	80.	418	85.	419	110.	420	110.
421	78.	422	40.	423	35.	424	75.	425	-	426	42.	427	35.	428	22.	429	50.	430	17.

e. &amp; o.e.

## BID FORM – Stamps and Collectables Auction 25 March 2019

to **Robert Murray,**  
5 & 6 Inverleith Gardens,  
Edinburgh, EH3 5PU

Tel. 0131.552 1220 :: 0131.478 7021

Email [auction@stamp-shop.com](mailto:auction@stamp-shop.com)

Please bid on my behalf for the undermentioned lots, up to the limits stated. I understand that lots will be purchased as cheaply as other bids, or reserves, if any, permit. I accept the rules printed on the reverse of this bid form.

Date; ..... Signed; .....

Lot No	Description	Maximum Bid	Lot No.	Description	Maximum Bid
--------	-------------	-------------	---------	-------------	-------------

**NB; a buyer's premium of 10% will be added to the hammer price of any purchases.**

**BLOCK CAPITALS, PLEASE !**

**Please post my purchases and charge to my  
credit/debit card;**

Name;

☐ MasterCard    ☐ Visa    ☐ Debit Card

Address;

Card number;

Postcode;

Telephone number;

Expiry date; ..... Start date; ..... Security Code; .....

Signed; .....Name as on card; .....



## **bid form overleaf**

**FORTHCOMING AUCTIONS;** Our next auction is planned for 3 June 2019.

This auction is conducted according to the "Philatelic Auctioneers Standard Terms and Conditions of Sale" (available if requested), with the exception of Clause 6, where "Scottish" should be substituted for "English".

**A Buyer's Premium of 10% (inclusive of global v.a.t.) will be added to the sale price of all lots.**

Telephone bids are accepted, but must later be confirmed in writing. Alternatives and limits are accepted.

*Material can be accepted at any time for inclusion in future sales. Our commission is 12% of the sale price, plus administration fee of £1.50 per lot + £6.50 per vendor (all plus v.a.t.). Full details on request.*

**We DO NOT charge buyers a handling charge per lot, nor is there VAT added to any sale prices.**

*Please bid early. In the case of equal bids, the lot will be sold to the person whose bid was received first (unless free bidding in the room equals the top book-bid, although the Auctioneer will try to regulate the bidding in such a way as to avoid this).*

Apart from viewing the lots in person, you can get a better description of any lot, by telephoning or writing. (Photocopies are available, at a minimal plus postage, or request scans by email.)

**Remember the Buy or Bid Sale - bring items along on the night. We will try to sell them for you, at a charge of 10% + 25p (optional insurance 1% extra). Have a look at what's on offer before and during the main auction. You can buy items outright or place a bid.** (Larger lots delivered to our shop are charged £1 per lot entry fee.)

*The annual subscription for our auction catalogues is currently £7 for inland addresses. If you are not already on our mailing list, please send us £9 with a note of your name and address. Regular bidders and buyers may qualify for free renewal. Rates abroad are European countries £12, Overseas £15.*

**Successful postal bidders should note that postage stamps are not an acceptable means of paying your account.**

*Prices realised for this sale will be published with our next catalogue. If you are not normally on our mailing list, the List of Prices Realised can be had by simply sending us a stamped addressed envelope. Alternatively, you can be put on our auction mailing list (see above).*

The telephone number at the Stewart's-Melville Pavilion is 0131.551 2331 (mobile 07974 962649).

*Open Bids ("Buy Bids") are not normally accepted. If such bids are made, they will be taken to mean a bid of ten times the printed estimate.*

Any invoices remaining unpaid fourteen days from the auction date (or after delivery to a postal buyer) will attract interest at the rate of 2% per month or part thereof.

**Robert Murray**  
**Scotland's Best-Stocked and**  
**Most Popular Stamp Shop.**





256



257



258



259



260



261



262



264



265



267



268



269



270



271



272



273



274



275



276



277



278



279



280



281



282



283



284



285



286



287



288



290



295



296



297





263



298



299



302



309



321



322



320



306



311



318



324



325