



Stamps and Collectables Auction

Monday 3 June 2019
at 7.00pm

Catalogue of Postage Stamps and Collectables to be sold by Public Auction, within the STEWART'S-MELVILLE CLUB PAVILION, 523 FERRY ROAD, EDINBURGH, EH5 2DW.
On view at Pavilion on afternoon and evening of sale, and at Shop for one week prior to sale (see details later in catalogue).



ex 288



ex 186



187



191



192



ex 206



ex 207



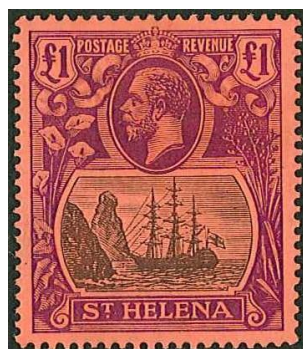
ex 278



ex 279



ex 294



ex 289



ex 295



324



332



ex 281



331



339

Viewing times are listed on page 25.(Viewing starts on Tuesday 28th May)**Collections and Mixed Lots.**

- 1 Heavy carton with world collection (no UK) in ten volumes, from earlies up to c.1989. Much is used with mainly odd values and some duplication. Wide range of countries with some strength in Asia (inc. some POs in China, HK and India of interest). Toning in places from storage. Also empty album. (1,000s) ☒ £200.
- 2 Two *Ideal* albums for stamps up to 1914-15 and for 1915-30, for both Empire and Foreign countries. Includes Penny Black (no margins), six Cape triangulars (mixed condition), and many other stamps catalogued in pounds. Quite well filled, both binders torn. (1,000s) ☒ £200.
- 3 Box with bundle of album pages, covers (some with stamps inside), bundle of old club books, etc. – all mainly pre-1960. (Many 100s) ☒ £120.
- 4 Voluminous world accumulation in packets and tins, on pages, in folders and junior albums, etc. Mainly general world ranges with nothing very modern, but we see a few slightly better bits here and there, so probably worth a good sort. (Many 1,000s) [1a] .. £100.
- 5 Two boxes with an eight-volume world collection, much of which is used odd values and part sets, two tall stockbooks of duplicated world, junior album dated 1941, UK year packs 1975-79, and other UK decimal mint, UK and Switzerland FDCs etc. (1,000s) ☒ £100.
- 6 *Centurion* album with m. & u. collection with very little after 1955. Includes UK 1840 Penny Black (u., 4-margins, close at two sides) and 2d Blue (4 margins, close at left), Canada 1928 50c *Bluenose* u., and other useful. Also some loose covers etc. (100s) ☒ £100.
- 7 Box with a UK collection 1840-1979 rather sparse in Westminster album inc. Penny Black (4 margins, close at right, red MC), 1840 2d Blue (2+ margins, all close, red MC), etc. Also an album of used Commonwealth, an album of used world, a stockbook of mint world, a file box of UK on-paper, etc. (1,000s) ☒ £100.
- 8 Massive collection/accumulation in large carton and a shopping bag, with several mixed albums and stockbooks (inc. an *Ideal*), thousands of loose stamps in envelopes and small box, some loose pages, bundle of UK FDCs and other covers, etc. ☒ .. £100.
- 9 Heavy big box with 22 various albums (mainly 22-ring) filled with world stamps, mainly general used ranges of odds but with m.m. Canada and USA included. (1,000s) [1a] £100.
- 10 Large and heavy carton with 16 assorted albums/stockbooks of world stamps. Also folders of u.m. post-war Germany in large blocks with much French Zone. Plus literature – UK Slogan Postmarks in 4 vols, etc. (1,000s) ☒ 90.
- 11 Three old junior albums – one with Commonwealth (with better UK inc. 1887 Jubilee m.m. odd values to 1/-, 1951 high value set m.m.), one with foreign, one with world. Also a more modern album. (100s) ☒ 80.
- 12 Box with UK mint (decimal face stated by vendor at £60+) and used, Guernsey new issues as delivered (face stated £100+), much world in stockbook and sorted into envelopes, etc. (1,000s) ☒ 80.
- 13 Two storage tubs with world stamps in envelopes, packets, small stockbooks, etc. Also loose covers. (Many 1,000s) [1a] 80.
- 14 Large and heavy carton with 9 assorted albums/stockbooks of world stamps – much thematic and Europe, WW2 “Route to Victory” PNC binder, 2 albums of postcards. (1,000s) [1a] 80.
- 15 Large heavy carton with world in 14 stockbooks, numerous tubs of packets and loose, bags of loose etc. Duplication throughout, heavy in places. (10,000s) Also some supplies. [1a] 70.
- 16 Carton with nine Chinese-made stockbooks of mostly used odd values, a few mint inc. China PRC 1980s/90s. Also two PRC 1990 yearbooks, two 1989 year packs, various world covers and UK p.packs etc. inc. three UK Millennium PNCs with £5 coins. (1,000s) ☒ .. 60.
- 17 Two boxes of mixed contents – album and stockbook of Israel, album of Cyprus m. & u., Cyprus year packs 1971-81, covers, stamps, etc. (Many 100s) ☒ .. 60.

A Buyer's Premium of 10% (vat-inclusive) will be added to all sale prices.

Collections and Mixed Lots, continued.

- | | | | | | |
|----|--|----|----|-----|-----|
| 18 | Carton with 11 assorted albums/stockbooks with world stamps with some dupl. Also album leaves, box of off-paper, club books, etc. (1,000s) <input checked="" type="checkbox"/> | .. | .. | .. | 60. |
| 19 | Three stockbooks, bulging with world stamps, much as odds or part sets, and inc. some UK decimal mint. (c.9,000+) <input checked="" type="checkbox"/> | .. | .. | .. | 60. |
| 20 | Two <i>Ideal</i> albums, one dated 1912 with sparse world collection of odd values, other 1914-15 for UK and Colonies plus Foreign (better filled with odd values, lightly picked). (Many 100s) <input checked="" type="checkbox"/> | .. | .. | .. | 60. |
| 21 | The shop's "charity box", this time very large in four cartons. Contains various albums, mainly junior type (inc. one quite extensive two-volume world collection), loose in envelopes/packets, some covers, etc. (1,000s) [1a] | .. | .. | .. | 60. |
| 22 | Carton with six assorted albums, stockbooks, loose on/off-paper inc. UK pre-decimal QE duplicated mint in a stockbook. Also a box of stockcards with some better, on/off-paper, etc. (1,000s) [1a] | .. | .. | .. | 60. |
| 23 | Heavy carton with 13 assorted albums/stockbooks of world (much UK), loose off-paper etc., inc. UK pres.packs/year packs which are water damaged (but some may be salvageable). Also a box of world kiloware (5kg+). (1,000s) [1a] | .. | .. | .. | 60. |
| 24 | Carton with stockbooks of UK plus FDCs, South Africa/SWA and Homelands in stockbook plus bundle of maxicards, covers, and large quantity of modern mint (often in blocks). Much can be gleaned from this but many others have toning. (1,000s) <input checked="" type="checkbox"/> | .. | .. | 50. | |
| 25 | A box with a <i>Healey</i> album dated 1891, a <i>Centurion</i> album dated 1938, and a binder of old stockleaves with mostly used stamps, odd values and part sets, up to about 1950. (Many 100s) <input checked="" type="checkbox"/> | .. | .. | .. | 50. |
| 26 | Carton with world clearance on stockcards, album pages, loose, etc. A large quantity that would take some sorting. (1,000s) <input checked="" type="checkbox"/> | .. | .. | .. | 50. |
| 27 | Large suitcase with world on/off-paper, UK pre-decimal and foreign sheets and blocks mint, ten single-size cover albums in good condition, etc. | .. | .. | .. | 50. |
| 28 | A heavy carton with 14 assorted albums/stockbooks of world – much UK and thematics etc. Also a box of off-paper, UK bundleware, and other world. (1,000s) [1a] | .. | .. | 50. | |
| 29 | Large and heavy carton with 8 assorted albums/stockbooks of world. Also three shoeboxes of off-paper. Duplication, heavy in places. (1,000s) [1a] | .. | .. | 50. | |
| 30 | Varied lot with strength in shipping, inc. bundle of postcards (early to modern) mainly of ships and boats, some mainly modern covers with much maritime interest, plus some other covers, loose stamps, a few coins, etc. (100s) <input checked="" type="checkbox"/> | .. | .. | .. | 40. |
| 31 | Carton with a two-volume Commonwealth colln. to early QE, six assorted albums/stockbooks, covers, album leaves, loose on/off-paper, etc. (1,000s) <input checked="" type="checkbox"/> | .. | .. | 40. | |
| 32 | Carton with five assorted albums/stockbooks of world, and a box of covers, off-paper, club books, booklets, stockcards, etc. (1,000s) <input checked="" type="checkbox"/> | .. | .. | .. | 40. |
| 33 | Flat box with three stockbooks, album pages, stockcards etc. with a wide variety of stamps inc. Jamaica 1946 Victory 3d perf.14x14 (21 u.m., cat.£9 each). (Many 100s) | .. | .. | 40. | |
| 34 | Box with three albums/stockbooks and loose stamps from UK, loose stamps and album pages from Australia, and three well-filled junior albums. (1,000s) <input checked="" type="checkbox"/> | .. | .. | 40. | |
| 35 | Very varied lot of disparate items, with a 1950s <i>Strand</i> album (many 100s), album of u. UK commems complete 1970-90, selection of modern u.m. Australia (face \$41), 12 indenture documents 1727-1837, a few UK single items, etc. <input checked="" type="checkbox"/> | .. | .. | .. | 40. |
| 36 | A broken stockbook of Flowers thematics, and a binder of world with the main value in older Commonwealth inc. St. Kitts-Nevis 1903-58 m.m. seln. (100s) <input checked="" type="checkbox"/> | .. | .. | 30. | |
| 37 | Three bulging volumes filled with world stamps, mostly more common and arranged by themes. Also old and worn <i>New Ideal</i> album with sparse collection. (1,000s) <input checked="" type="checkbox"/> | .. | .. | 30. | |
| 38 | Odd assortment of items inc. two of UK 1966 Christmas 3d u.m. sheets (each with one "missing T" cat.£25), a few UK decimal p.packs, small bag of world kiloware, a few cigarette/trade cards, and others. (100s) <input checked="" type="checkbox"/> | .. | .. | .. | 30. |

Collections and Mixed Lots, continued.

- 39 A *Century* album from about 1900 with a sparse collection of mostly used odd values, picked over in places, and all UK removed. (100s) ☒ 30.
- 40 Six assorted albums/stockbooks, world on/off-paper, and some covers, inc. UK 1946 Victory 3d with "Seven Berries" variety u.m., and early UK decimal mint face c.£38. (Many 100s) ☒ 30.
- 41 **British Commonwealth**; heavy carton with 16 stockalbums with m. & u. from QV to about 2000, eight plastic pockets of partly sorted (much used), an album of sets (also inc. Austria). Also UK in *Windsor* album to 1970, *GB Special* album with m. & u. to 1970, and a Davo album with UK m. & u. to 1990, etc. (1,000s) ☒ £120.
- 42 --; *Imperial* album for stamps up to 1928, inc. two UK penny blacks, one UK 1840 2d blue (cut-into), some used UK departmental issues, otherwise mostly odd values, and some areas sparse. (100s) ☒ £100.
- 43 --; a *New Ideal* album for British Empire 1840-1936 (interleaved) mostly used odd values, also *New Imperial* for UK and Empire 1840-1936 Vol.II Mauritius to Zululand mostly used odds but sparser. Both albums in good condition. (100s) ☒ 90.
- 44 --; album with Australia KG5 to early QE inc. 'Roos m.m. to 2/-, u. to 5/-, KG5 m.m. & u. to 1/4, later commems m.m./u. etc., New Zealand QV to early QE inc. values from 1898 etc. issue m.m./u. to 2/-, 1906 Christchurch ½d, 1d, 3d m.m., KG5/KG6 m.m./u., etc. (100s) ☒ 80.
- 45 --; printed SG *King George VI* album with m.m. & u. of mainly part sets and odds, lightly picked in places. (Many 100s) ☒ 70.
- 46 --; collection in box of mainly covers and some stamps etc. – binder of covers, binder of Ireland, binder of sport (inc. cover signed Freddie Flintoff, another signed Gavin and Scott Hastings), two binders of Canada FDCs (much 1980s), box of Australia covers, cards, etc. (100s) ☒ 60.
- 47 --; stockbook of QV to early QE m.& u. with good range of countries, and some sets and better odds. Includes New South Wales 1890 5/-, 1891 surcharge 7½d and 12½d all over-printed SPECIMEN. Also just a few foreign. (100s) ☒ 60.
- 48 --; SG *New Ideal* album (interleaved, quite nice condition, for stamps to 1936) with fairly scattered collection, and SG *King George VI* album (interleaved, fine condition) with a moderate collection of m. & u. odds. (100s) ☒ 50.
- 49 --; small box with wide range of mint and used in stockbooks and stockcards. Includes UK, and some USA. (Many 100s) ☒ 30.
- 50 --; stockleaf of slightly duplicated u.m. 1934-48 of St.Helena, Bahamas, NZ, and British Honduras. S.t.c.£170. (c.80) 20.
- 51 --; **Omnibus**; 1949 UPU u.m. colln. in stockbook, not quite complete. Generally very fine but some are just below par – minimal offsets, bends (not creases), some with toning, etc. (275) ☒ 50.
- 52 --; --; heavy box with five binders of stamps, covers, PNCs, etc., for royal events in 1977, 1981, 1985, and 1995 etc. (100s) [1a] 30.
- 53 --; --; 1981 Royal Wedding collection – one album appears u.m. in mounts, others are loose u.m. matched with pages, and more still is loose. (100s) ☒ 20.
- 54 **Europe**; album with m.m. & u. from earlies to 1960s from Austria, Netherlands, and Germany, each with many stamps/sets cat. in pounds. (Many 100s) ☒ .. 90.
- 55 --; binder of m.m. & u. Romania 1935-51, Austrian revenues 1898-1910, Austria 1984-93 stamps and postal stationery with diagonal bar opts., Bosnia and Hercegowina 1879-1918, Czechoslovakia 1980-87 min.sheets etc., Hungary 1928-41. (100s) ☒ .. 60.
- 56 --; binder of m.m. & u. San Marino 1923-52 with a few later, Switzerland 1919-86, and Italy 1951-67. (100s) ☒ 60.
- 57 --; binder of Poland, stockbook of USSR, stockbook of France, and a stockbook of various Europe, some dupl. (Many 100s) ☒ 40.

A Buyer's Premium of 10% (vat-inclusive) will be added to all sale prices.

Collections and Mixed Lots, continued.

- 58 **Europe**; a mixed selection of generally selected items inc. Belgium 1954 Beguinage set (6) u.m. (tone spots), stockleaf of Switzerland 1908-42, Romania 1906 Exhibition set (11) m.m. (cat. c.£225 a few with tone spots or gum thins), a few Spain and Portugal, etc. (100s) 40.
- 59 --; pages of Serbia 1869-1918 m. & u. and a few later German Occupation, with duplication. Also Saar 1920-34 mostly used. (100s) 30.
- 60 **Foreign**; box with Norway 1992 year book, album pages, stockbook of Belgium stamps mainly u., and a packet of USA (year sets, album pages, cards, etc.) (100s) ☑ .. 60.
- 61 --; two *Ideal* albums for stamps up to 1914-15 and for 1915-30, with mostly odd values used and picked over lightly, but still useful. (Many 100s) ☑ .. 50.
- 62 **Middle East**; binder of m. & u. from Turkey 1898-1978, Qatar 1957-92, UAE 1976-2009 (100s). Also Iran covers and postcards 1917-55 (30). ☑ .. 40.
- 63 **Scandinavia**; stockleaf of used Denmark 1901 Newspaper Stamps (6), Norway 1856-1929 (13), Sweden 1855-1920 (28), with light duplication. S.t.c.£1,250. .. 50.
- 64 --; selection of items inc. Denmark earlies (20), Finland inc. several useful 1930s, and Sweden 1955 Stockholmia set of five m.s. u.m., etc. .. 40.
- 65 --; 1856-1987 dupl. stock of mostly used in two stockbooks, and monograph of Norway 1855 issue. Also a packet of Sweden off-paper – seems good variety. (1,000s) ☑ 35.
- 66 --; selection with Denmark 1933-41 Caravel 25ø blue m.m. and 25ø brown type I m.m. (cat. £80 and £37), Slesvig 1920 set (14) u. on six covers (toned), Norway small approval book (inc. 1867-68 issue, 1905 1kr and 2kr surcharges u., several skilling Posthorns u., and later Posthorns), and a few other Norway. .. 24.
- 67 **Booklets**; album of world booklets – some folded open on pages, others in plastic pocket leaves, mainly mint. (c.125) ☑ .. 40.
- 68 **Thematic; Aviation**; two-volume Westminster collection *Aviation Heritage* with stamps, covers, and PNCs. Also a single volume *The Royal Family* with covers, PNCs, UK coin face value £5. ☑ .. 40.
- 69 --; **Christmas**; written-up collection with NZ stamps/FDCs, world miniature sheets (much Commonwealth), covers (much UK and Commonwealth), WW2 ephemera. Also loose NZ covers, world stamps in stockbook and loose. Finally some non-Christmas related stamps and covers. (Many 100s) ☑ .. 50.
- 70 --; **Europa**; 1959-85 extensive lot m. & u. in packets and on stockcards with some dupl. inc. blocks and miniature sheets (with a few Monaco). Wide range. (100s) .. 60.
- 71 --; **Second World War**; three albums with modern commercial collection of m.s., covers, PNCs, etc. ☑ .. 24.
- 72 --; **Printing**; folder with 1985 information on the current work of Harrison & Sons. Also single-stamp FDCs which would have contained Harrison packs, etc. ☑ .. 20.
- 73 --; **Royalty**; three binders of stamps, covers (much Benham), maxi-cards, etc. (100s) ☑ 30.
- ☛ **Cinderella**; see China.
- ☛ **Forgeries**; see Burma (Japanese Occupation), China (Shanghai), and UK.
- 74 **Covers**; bundle of mainly 1800s-1850s covers, mainly with shipping connections (ship letter marks, manuscript names of ships, etc.) – UK and other countries. (25) ☑ .. 70.
- 75 --; large lot in four boxes and a file box, with much in UK FDCs and unused UK PHQs, but with world covers and postcards included. [1a] .. 50.
- 76 --; world covers in two boxes and a case – a wide range of philatelic and commercial, mostly loose with some in albums. (100s) [1a] .. 50.
- 77 --; mixed cover album of largely UK FDCs, but with a few others e.g. UK penny red covers (10), UK 1868 to India franked 1/- and 1d with SEA POST OFFICE backstamp, etc. (120+) ☑ 40.
- 78 --; carton with ten assorted binders of covers – many UK FDCs, but also includes other countries, and commercial. (100s) ☑ .. 30.

Any lots marked “[1a]” will not be taken to the auction venue, and have to be collected from our shop (see notes on page 26).

Collections and Mixed Lots, continued.

- 79 **Covers**; large box with world covers, mostly commercial, inc. a few FDCs, express, air-letters, etc. Some are large size, and no UK noted. (c.1,450) ☑ 30.
- 80 --; **British West Indies**; two small cover albums of FDCs of Bermuda 1985-92 (29), and British Virgin Islands 1974-91 (62). Some toning. ☑ 20.
- ☞ --; see also Collectables (Military) (lot 170)
- ☞ **Literature**; see Germany.
- 81 **Supplies (Second-Hand)**; large carton with 23 Royal Mail presentation pack binders, some with leaves, inc. 3 slipcases. [1a] 70.
- 82 --; carton with 14 Royal Mail presentation pack binders (3 with slipcases). [1a] .. 50.
- 83 --; tub of 18 Royal Mail cover albums inc. some leaves. [1a] .. 50.
- 84 --; carton with 16 light tan Royal Mail presentation pack binders. [1a] .. 40.
- 85 --; carton with 8 Royal Mail postcard albums, and 6 Royal Mail FDC binders, some with pages. [1a] 50.
- 86 --; heavy carton (and another box) filled with album leaves suitable for Royal Mail presentation pack or first day cover albums. Also a few other leaves. [1a] .. 50.
- 87 --; tub with 13 *Kestrel* 2-up cover albums, various colours, inc. 2 slipcases. [1a] .. 40.
- 88 --; carton with 34 one-up cover albums, various makes. [1a] .. 30.
- 89 --; three big tubs with 28 assorted ring binders, some with leaves for covers etc, 8 one-up cover albums, 6 stockbooks (mixed sizes), shoebox of sleeves, etc. [1a] .. 40.

Non-Philatelic Items (Collectables)**BANKNOTES**

- 90 Folder with a world mix inc. a fair proportion of East African. Varied quality. (c.80+) ☑ 80.
- 91 Small world mix of circulated notes comprising China (30+, mainly Sun Yat-sen), and others (36, inc. Jersey 1942-45 6d with corner missing, and USA 3 x \$5) .. 20.
- 92 **Scotland**; mixed bundle in grades from uncirculated to very worn, mainly 1950s-2000s. Includes North of Scotland Bank 1932 £1 (F). (35) £110.
- 93 --; **Bank of Scotland**; 1881 (8 Dec.) fragment of £1 note, possibly a proof, being only the upper section (cut just below "BANK OF SCOTLAND"), dated, not numbered, and without red print. EF but for some paste marks on reverse. (As PMS BA79f) .. 20.
- 94 --; --; 1937 (3 Aug.) £5 note in VG grade (general wear, some grubbiness, small central hole, etc.). PMS BA101a (cat.£180 for F). .. 30.
- 95 --; --; 1939-43 three £1 notes, viz 12.6.1939 F, 2.6.1942 F, and 16.10.1943 about EF. PMS BA95b, BA95d. .. 60.
- 96 --; --; 1945-53 five £1 notes with grey centre - 4.10.1945 F, 5.1.1948 about VF, 1.12.1950 F/VF, 5.1.1951 VF, and 9.11.1953 EF+. PMS BA98b, BA98c. .. 40.
- 97 --; --; 1952-60 four £5 notes - 24.1.1952 VG, 13.4.1956 F, 23.5.1960 F, and 24.5.1960 approx. VF. PMS BA103c, BA105a, BA105b. .. 40.
- 98 --; --; 1955-86 collection of £1 notes with a wide variety of dates but some duplication, Fine to Uncirculated. (51) £100.
- 99 --; --; 1958 (26 Mar.) £20 note in VG condition (would on the whole grade as F+ but note has a hole from folding and a graffiti mark). PMS BA109f (cat.£50 for F). .. 30.
- 100 --; --; 1961-2007 collection of £5 notes representing various issues and a wide variety of dates with just a little duplication. Generally Fine to Unc., with condition normally EF/Unc. in later years. Includes 13.10.1983 replacement Unc. (28) £240.
- 101 --; --; 1969 (5 May) £20 note VG+ (would be F but has stain, and graffiti on reverse), PMS BA109h (cat.£60 for F). .. 30.
- 102 --; --; 1977-2007 collection of £10 notes of various issues and with mainly different dates though a few duplicates. Generally EF to Unc, usually better later. (22) .. £300.

A Buyer's Premium of 10% (vat-inclusive) will be added to all sale prices.

Non-Philatelic Items, continued.**BANKNOTES, continued.**

- 103 **Scotland; Bank of Scotland**; 1991-2007 collection of £20 notes, all in EF or Unc. grades.
(15) £380.
- 104 --; **British Linen Bank**; 1929-70 range of £1 notes (27, a little duplication of dates), and 1951-68 £5 notes (5 different dates). Varied quality. .. £160.
- 105 --; **Clydesdale Bank**; 2006 (9 Jan.) Adam Smith £50 note, Unc. PMS CL62d cat.£200. 70.
- 106 --; **Commercial Bank of Scotland**; selection of notes comprising £1 of 1927, 1938, 1947, 1949, 1954, 1955, 1957, and 1958, and £5 of 1928 and 1956. Varied quality. .. 70.
- 107 --; **National Bank of Scotland**; selection of notes comprising £1 of 1939 (2 diff.), 1943, 1947, 1949, 1955, 1956 (2 diff.), and 1957 £5 of 1949, good to v.f. .. 80.
- 108 --; **National Commercial Bank of Scotland**; 1959-67 selection of £1 (6), and £5 (5), mainly different dates. Good to VF+ .. 70.
- 109 --; **North of Scotland Bank**; 1945 £1 unc., and 1940 £20 poor. .. 70.
- 110 --; **Royal Bank of Scotland**; 1920 (11 Nov.) "square" £1 note in Fine condition - good general appearance and not looking too dirty on the face, the reverse displaying much more in creases and marks, also a couple of small thin spots near the foot. PMS RB53g, cat.£180. £100.
- 111 --; --; 1927-42 selection of six £1 notes signed Speed, comprising 30.11.1927 F, 15.10.1928 poor, 1.12.1938 F, 1.9.1940 poor, 1.9.1941 VF, and 1.7.1942 F/VF. PMS RB54b, RB55b. .. 70.
- 112 --; --; 1940 (1 Jun.) £5 note, F. PMS RB57e cat.£120. .. 40.
- 113 --; --; 1944 (2 May) £5 note, F/VF. PMS RB57h cat.£70/£180. Also 1952 (1 Jul.) £5 about F (RB58a, £15). .. 60.
- 114 --; --; 1947-51 selection of five £1 notes signed Brown, comprising 6.1.1947 VF, 1.10.1949 EF, 1.6.1950 VG, 2.1.1951 F, and 1.7.1951 EF. PMS RB55d. .. 90.
- 115 --; --; 1952-54 three different £1 notes signed Dick, viz 1.11.1952 EF, 1.8.1953 VF, and 1.4.1954 F. PMS RB55e, 55f, 55g. .. 40.
- 116 --; --; 1957-64 seln. of nine different £1 notes signed Ballantyne, VG to EF. PMS RB55h. 40.
- 117 --; --; 1964-67 selection of ten different dates of £1 notes in reduced size, F to EF. PMS RB56a, RB56b, RB64. .. 35.
- 118 --; --; 1969-2001 collection of £1 notes in a variety of dates but some dupl., mainly EF/Unc., some poorer. (29) .. 50.
- 119 --; --; 1992 European Summit £1 bundle of 85 consecutive notes, uncirculated. £110.
- 120 --; **Private Non-Bank Issues**; John McLauchlan Ltd, Edinburgh (turf accountants); advertising slip in style of banknote, issued roughly 1940s ? – two examples with sequential serial numbers. Unc. but for some edge toning. .. 20.
- 121 **England; Bank of England**; 1928 Mahon 10/- with prefix Z54, uncirculated. BE20c, cat. £500. .. £100.
- 122 --; --; 1928 Mahon 10/- with prefix Z90, uncirculated. BE20c, cat.£500. .. £100.
- 123 --; --; 1928 Mahon £1 with prefix C89, Unc. BE41c cat.£250. .. 60.
- 124 --; --; 1928 Mahon £1 with prefix B49, EF. BE41c cat.£120. .. 30.
- 125 **United Kingdom**; mixed bundle of mainly Bank of England notes of mixed ages (mainly 1950s-2000s) and grades (uncirculated to very poor). Includes Treasury Bradbury 10/- (TR2b, F), Bank of Ireland 2008 £10 (2) and £20 unc., Newcastle-upon-Tyne Joint Stock Banking Company 1836 £5 (worn, optd. CANCELLED), couple of Channel Islands, etc.
(53) £160.
- 126 --; **Treasury**; 1914 First Bradbury issue 10/-, grading somewhere about VG (reasonable appearance but tears on folds at three sides, and a bit grubby on back). TR1b (cat.£650 for VF) .. 40.
- 127 --; --; 1915 Second Bradbury issue 10/- with "R1" over "15" prefix, F+. TR3b (cat.£350 for VF) .. 50.
- 128 --; --; 1922 Second Fisher issue 10/-, F. TR8 (cat.£175 for VF). .. 30.

Non-Philatelic Items, continued.**BANKNOTES, continued.**

- 129 **United Kingdom; Treasury**; 1923 Second Fisher issue £1, with “B¹” over “100” prefix, VF+. TR18b (cat.£85 for VF). 30.
- 130 **United Kingdom; Bank of England**; 1940-67 selection of 10/- notes, with 1940 Peppiatt “Z06D” about EF, 1950 Beale “H90Z” VF, “M92Z” EF, and various portrait type. (10) 45.
- 131 --; --; 1950 Beale 10/- with “07A” prefix (replacement), EF. BE29b cat.£175. .. 50.
- 132 --; --; 1930-81 seln. of £1 notes inc. Catterns (prefix T33) EF, others mainly EF/Unc. (14) 40.
- 133 --; --; 1948 Peppiatt £1 with “S05S” prefix EF, BE53b cat.£275. Also 1950 Beale £1 with “S37S” prefix AU, BE55b (cat.£50/£100 for EF/Unc.). Both replacement notes. 80.
- 134 --; --; 1957-2012 range of £5 notes, from 1957 O'Brien EF, 1963 Hollom AU, etc. (9) 70.
- 135 --; --; 1971-99 selection of higher denomination notes comprising Page £10 EF, 1991 Kentfield £10 about EF, Somerset £20 prefix “E15”, Gill £20 “38M” EF, Gill Historical £20 “A46” Unc., and Lowther £20 “AH50” Unc. £130.

CIGARETTE AND TRADE CARDS

- 136 Old shopping bag with accumulation of cards, mainly loose, some bundled. Mainly commoner but some a bit scarcer in places. Some fine, some worn. (Many 100s) ☒ 30.

COINS

☛ Estimates are based on a gold market price of £980/oz, and silver of £11.50/oz.

- 137 Assortment of boxed items (mixed official/commercial) inc. 1980 set of 7 silver Queen Mother, Iceland 1974 set (2, silver), 1992 Ecu UK pattern set of 12, etc. (19 items) ☒ 90.
- 138 Box with a mix that is strong in East Africa, some better UK pennies and farthings, and other UK and some foreign. (Estimate c.200) ☒ 80.
- 139 Four hammered coins; Scotland 1602 twopence, Ireland Edward I penny, one small Venetian coin, and another. Poor to fine. 40.
- 140 Little old suitcase with various containers of mixed world coins. All sorts, in no particular sense of order. (Approx. 15kg gross weight) ☒ 60.
- 141 Cardboard box with very mixed world coins in various smaller containers. Gross weight approx. 14.3kg. ☒ 60.
- 142 Big old biscuit tin containing a loose unsorted mix of world coins. (Approx. 12.75kg) ☒ 50.
- 143 Numerous common UK coins, plus some UK pre-1947, two of 2006 £5 crown, one or two other foreign silver, etc. ☒ 50.
- 144 **United Kingdom**; small mix of mainly commem crowns, but inc. two 1953 “plastic sets”, 1998 & 2000 1oz silver Britannias, and five of 1992 RBS £1 European Summit £1 notes (each boxed). ☒ 50.
- 145 --; 2009 Royal Mint uncirculated set, inc. Kew 50p. £100.
- 146 --; two of Royal Mint 2011 “Celebrating Great Britain” unc. set (£1 Cardiff and Edinburgh, 50p WWF, £2 Mary Rose and King James Bible, plus 8 standard). Also 2014 Floral £1 Two-Coin set. Some wear on presentation cards. ☒ 70.
- 147 --; **Proof Sets**; 1953 proof set in box of issue – coronation crown to farthing. Some natural toning. ☒ 60.
- 148 --; --; proof sets of 2001, 2003, 2005, 2006, 2007, 2008, 2010, and 2011. ☒ £130.
- 149 --; --; 2009 proof set (inc. 50p Kew). ☒ £100.
- 150 **England; Hammered**; Edward I and Plantagenets (9 pennies, 2 halfpennies, farthing, and halfgroat), Elizabeth (6 x 6d, and a penny), and Charles I (3 twopences, 1 penny). (24) ☒ £120.
- 151 **East Africa**; German East Africa ½r (2), ¼r (2), Mombasa 1888H 1r, and six others. Good catalogue price. (11) ☒ 60.
- 152 **Gold Coins; Guernsey**; 1999 tiny Queen Mother £5 in UK 1999 PNC. AGW 0.0397oz. ▲ 35.

☛ PNCs; see UK PNCs

A Buyer's Premium of 10% (vat-inclusive) will be added to all sale prices.

Non-Philatelic Items, continued.**MEDALS**

- | | | | | | | |
|-----|--|----|----|----|----|---------|
| 153 | Queen's Sudan Medal, and Khedive's Sudan Medal 1896-1908 with Khartoum clasp (no ribbon), both named to 3700 Private J.Stewart of the 21 st Lancers (whose first name was John). Both are in fine condition but with some wear through polishing. The 21 st Lancers were instrumental in the famous charge during the Battle of Omdurman. Also included in the lot are a photograph of the recipient in uniform, and a chain-mail epaulette (as seen in the photograph). | .. | .. | .. | .. | £1,000. |
|-----|--|----|----|----|----|---------|
- 154 Group of three comprising India Medal with Punjab Frontier 1897-98 clasp, Queen's South Africa Medal with two clasps (Wittebergen and Modder River), and King's South Africa Medal with two clasps (South Africa 1901 and South Africa 1902). All named to 4323 Pte. J. Clark, Highland L.I. ("2" on first, and "1st" on second medal). Generally very fine though with a bit of wear probably from polishing. Mounted for wear. All in Queen Victoria Gift Chocolate Box dated 1900. ☒ £300.
- 155 Mix of WW1 medals comprising {i} standard pair named to 14679 Pte. J.Walker, S.Gds., {ii} standard pair named to 242518 Gnr. D.R.Grant, RA, along with Special Constabulary Long Service Medal to David Grant, {iii} standard pair named to 49038 Pte. R.L.R.Walker, R.Scots, and {iv} British War Medal, and Mercantile Marine War Medal both named to James Rae. Also Silver War Badge and six other badges. ☒ £100.
- 156 WW1 standard pair named to "64356 Pte. T. Pollock, M.G.C." (died 14 April 1918). ☒ 30.

MEDALLIONS

- 157 2002 Duke of Wellington 5oz (gross) sterling silver medallion (Westminster Collection). ☒ 50.

POSTCARDS

- 158 Original old album (broken) with a general collection of cards mainly 1900s/1910s with biggest section of Scotland (inc. a few Northern Isles), plus other British Isles, fair range of foreign, and mixed subjects. Collection has probably been slightly picked but otherwise as collected and with numerous useful cards. (c.285) ☒ £200.
- 159 **Scotland**; 1904 real photographic card of Stromness Post Office (staff plus horse and cart posed outside, some a little out of focus), the message on the back reading "*This photo represents the last day in the Stromness Old P.office.*". Cancelled Stromness c.d.s. 18 May 1904, sent to Finstown. Surface cracked at top, a bit grubby on reverse. .. 40.
- 160 --; eleven albums of early to modern cards almost entirely of Forres and environs (many Findhorn also). A good variety of views, including at times numerous different pictures of the same subject. (Estimated 1,000 to 1,500) Also six £1 notes. ☒ £300.
- ➡ --; see also Scottish Postal History.
- 161 **Malta**; unused RP card of group in front of large hut with sign *The Orkney Hut/YMCA*, written on back as from Ghain Tuffieha Camp, Malta, 6 Nov. 1916, addressed to Orkney but not posted. Also pc of Maltese Lady with 1d stamp cancelled Army PO c.d.s. (unclear), written from same hut. 10.
- 162 **Aviation**; seven different unused cards (plus one duplicate) from the International Aviation Meet, Chicago, August 1911. One shows *Wm.R.Badger in Baldwin Biplane, Killed Aug.15 1911*, another of *Wreck of Stone's Monoplane*. Others are of other aircraft or more general views of the event. 50.
- ➡ **Shipping**; see Mixed Lots (lot 30).
- 163 **Modern Cards**; large lot in three flat boxes, the remains of a charity sale, comprising an estimated 7,500 cards. Generally modern views, UK and foreign, used and unused. [1a] 35.

OTHER CATEGORIES

- 164 **Autographs**; little autograph book with a mixture including Stan Laurel and Oliver Hardy (possibly from visit to Edinburgh in 1952 or 1954 ?), Eddie Calvert, etc. .. 30.

Non-Philatelic Items, continued.

- ➡ **Autographs**; see also UK (Autographed Covers).
- 165 **Bonds and Shares**; large framed certificate (£20 Sterling) for Chinese Government Five Per cent Reorganisation Gold Loan of 1913, in glass frame (may be stuck at back), with most coupons at rear. [1a].. .. 15.
- 166 **Calendars**; eight large and very arty calendars produced by paper companies etc, so generally high quality, mainly Zanders. [1a] .. 15.
- 167 **Communion Tokens**; selection of twenty-eight different Scottish tokens. ☑ .. 60.
- 168 **Jewellery**; East African (probably Ethiopian) necklace in unhallmarked white metal. Central disc 90cm diameter with gold-coloured flower on sunburst design, on chain with cylindrical ornate "beads", two of these with Maria Theresa thalers attached. Also two further M.T. thalers (one fixed to "bead", one loose). 9oz troy total weight. Moderate wear, "as is". ☑ £100.
- 169 **Masonic Tokens**; selection of mainly Scottish items with wide variety. (31) ☑ 30.
- 170 **Military**; small WW2 seln. inc. seven items from P.O.W.s, two to P.O.W.s, etc. Also a few other items of ephemera. Mixed condition. Also other military ephemera (cards, leaflets, other printed matter - some are reproduction). .. 30.
- 171 **Collectables Mixed Lots**; carton with most bulk in modern postcards, but also a small album of older Oberammergau etc., and a few bits of ephemera. [1a] .. 15.

End of Non-Philatelic Section**Stamps Classified by Country**

- 172 **Australia**; 1913-91 mostly used colln. in KA-BE album (damage to spine), all in mounts with SG nos. below, including better KG5/KG6. Also another similar album with used 2003 only. (100s) ☑.. .. 50.
- 173 --; ten assorted stockbooks or albums of mostly used, with much duplication, wide range of periods but mainly QE. (1,000s) ☑ .. 70.
- 174 --; 1937-96 heavy carton with a used collection in 14 binders. Also inc. 1948-56 ½d mint pane of 80 (one with "sky retouch" u.m.). (1,000s) [1a] .. 60.
- 175 --; c.2006-08 range of u.m. and used, mainly in sets and inc. some se-tenant blocks and strips, plus range of Aust. Antarctic Territory starting at earlier date, etc. S.t.c.£720. (100s) 80.
- 176 **Austria**; bundle of covers and cards, from some pre-stamp, then early adhesive period, and through to modern. Includes many items of interest, inc. 1892 private postal stationery card for International Music and Theatre Exhibition, with special cancel. (c.150+) ☑.. £100.
- 177 **Bahamas**; 1912-19 1/- and 5/- m.m., 1921-37 several m./u. values inc. £1 m.m. (toned gum). Also Staircase 1911-19 1d, 2/-, and 1921-29 5d, 3/- m.m. S.t.c.£320+ (15) .. 60.

BERMUDA

- 178 1865-1904 m. & u. range of QV issues on a few pages. Includes 1865-1903 basic set (both perfs) u., 1880 4d m.m., 1883-1904 various values to 1/- (2) m.m., odd values to 1/- u., etc. Some dupl./shades. Mainly good/fine, a few faults. (52) .. £100.
- 179 1875 1d on 3d surcharge fine used, centred to lower-right. Reasonable cancel, perfs good except a few shorter at lower-right. SG 16 cat.£350. Brandon certificate (1979) states "genuine". .. 50.
- 180 1875 1d on 1/- surcharge fine used, centred to left and a little low, perfs reasonable but a bit irregular. SG 17 cat.£250. Brandon certificate (1977) states "genuine". .. 30.
- 181 1880 4d orange-red in two attractive fourblocks (two shades) mainly l.m.m. (two stamps u.m.). SG 20 cat.£168. .. 40.
- 182 1865-1903 and 1883-1904 selection of 1d and other values with numeral postmarks comprising 1, 2 (6 black, 1 blue), 3 (10), 4, 5, 6, 7, 8 (3), 9, 10, 12 (3), 13 (2), and 15. 20.

Email bids are acknowledged within 24 hours (1 hour on auction day). If no reply from us, please resend.

A Buyer's Premium of 10% (vat-inclusive) will be added to all sale prices.

BERMUDA, continued.

- 183 1898-1941 selection of covers inc. 1907 postcard with Turks Islands receipt mark, 1909 postcard signed by "M. (?) Kitchener" (Governor's family), c.1909 2d registration envelope optd. "SPECIMEN" (tone spots), two WW1 censored items, etc. (11) 30.
- 184 1902-49 useful remainder collection on pages with 1906-10 1d to 4d m.m., full set u., 1910-25 set (9 plus some shades) m.m., same u., 1920-21 and 1921 both Tercentenary sets (mint and used of each), 1922-34 (12 plus some shades) m.m. and u. sets, 1924-32 2/- f.u., 1935 Jubilee m. & u. sets, 1936-47 (9) m. & u. sets, 1948 S.Wedding set u.m., etc. Condition mainly fine, though a few faults in places. (c.200) £240.
- 185 1910-20 g./f. used selection inc. 1918-22 2/- and 2/6. S.t.c.£220. (21) 26.
- 186 1918-22 KG5 high values set (missing 5/-) mint. 2/- is l.m.m. centred right, 2/6 m.m. centred left, 4/- m.m. centred low to right (with heavily mounted margin attached with plate no.), 10/- l.m.m., and £1 l.m.m. centred slightly left. SG 51b-55, cat. c.£550. £150.
- 187 1918-22 5/- with two varieties - the "nick in top right scroll" and inverted watermark. Mounted mint, centred to left. Composite of SG 53c cat.£425 and SG 53dw cat.£475. £200.
- 188 1924-32 KG5 high values set comprising 2/- (2 shades - one u.m. with touch of toning, other l.m.m.), 2/6 (4 shades l.m.m./u.m.), 10/- (2 papers - one each l.m.m./u.m.), and 12/6 (1 m.m.). Minimum cat.£870. £300.
- 189 1937 Coronation set (3) in u.m. sheets of sixty, some slight toning. Cat.£120. 20.
- 190 1938-53 KG6 fine selection of mint high values on two pages, comprising 2/- (5), 2/6 (4), 5/- (5), 10/- (6), 12/6 (2), and £1 (5), and showing a good range of perfs., shades, and papers. Mixed m.m./l.m.m./u.m. Minimum cat.£1,041. £200.
- 191 1938-53 KG6 12/6 grey and pale orange, perf.14, with the "gash on chin" variety, mounted mint (some hinge remains). Centred just a touch to left, some light toning at perfs. SG 120cf (cat.£2,500 for u.m.). Brandon certificate (2003) states "with original gum is genuine...slight toning." £240.
- 192 1938-53 KG6 12/6 grey and yellow, perf.14 fine l.m.m., centred to left. SG 120d (cat.£700 for u.m.). Brandon certificate (1982) states "with original gum is genuine". £100.
- 193 1938-53 KG6 selection of used high values comprising 2/- (2), 2/6 (2), 5/- (2), 10/- (2), 12/6 (1), and £1 (2). Generally different perfs, shades, or papers, and mainly f./v.f.u. Minimum cat.£385. £100.
- 194 1953-92 mint collection in two albums, mainly u.m. from about 1969 onwards, and appearing about complete, sometimes with used examples also. Majority are fine, but just a bit of toning here and there. (100s) ☒ 60.
- 195 **Bosnia and Hercegowina**; m. & u. range on stockleaves with some dupl. (100s) 30.
- 196 **British Honduras**; 1938-47 defin. 25c (7), 50c (11), and \$1 (11) g./f.u., cat.£176. 20.
- 197 **British Levant**; 1913-14 1pi on 2½d bright blue in lower-left corner block of six with control number, m.m./u.m. SG 36a cat.£84., couple of short perfs. 20.
- 198 **British Virgin Islands**; 1968-91 mint collection in two albums, apparently all u.m. and probably about complete (only a few m.s.). Also odd used often tucked in behind. (100s) ☒ 70.
- 199 **Burma; Japanese Occupation**; cover with ten stamps - two each in five designs (State Crest, Farmer, and 1943 Independence Day set) but not in normal colours. Status uncertain. 30.
- 200 **Canada; Provinces**; used/unused/mint selection of Prince Edward Island (6), New Brunswick (4), and Nova Scotia (16). S.t.c.£540 and mainly good/fine. 40.
- 201 --; **Newfoundland**; 1897 400th Anniversary set (14 - 3c creased, small thin on 15c), and 1897-98 portraits set (8), all mtd. mint (some with heavy hinges etc.). Cat.£325 and £150. 70.
- 202 --; --; 1911-16 Coronation set (11), and 1923-27 small pictorials set (14) m.m., mainly fine. Cat.£250 and £180. 80.
- 203 --; --; 1931 Perkins Bacon set (11) m.m., SG 198-208 cat.£225. 40.
- 204 **Canada**; 1908-79 duplicated mostly used collection in stockalbum. Also a binder of dupl. mint 1955-82 (face value stated by vendor as \$339). (1,000s) ☒ 80.

- 205 **China**; 1888-1929 largely used (some unused or m.m.) on pages inc. some better and some areas with duplication. Includes 1894 Dowager 1c, 5c, 6c m.m., 1897 surcharges 1c (SG 34), 2c (SG 59), and ½c (SG 78) m.m., 1898/1900 20c, 30c, 50c, \$1 unu., 1912 opt. values to 50c, numerous Junks, 1921 Postal Service (4 unu. sets), 1928 Chang set (4) unu., etc. Condition varies – some fine, some small faults, a few poor, some tone spots. (c.500+) £200.
- 206 --; 1912 Revolution set (12) unused (no gum). Some are fine, but others have thins or other faults (10c badly damaged, \$1 small thin, small crease, perfs pulled at left, \$2 short perf and corner crease, \$5 some rough perfs and wrinkles). SG 242-253 (cat.£2,400 for m.m.). £150.
- 207 --; 1912 Republic set (12) unused (no gum). Similar condition to previous lot (5c, 8c 10c serious faults, \$1 sound, \$2 corner crease, \$5 sound). SG 254-265 (cat.£1,800 for m.m.). £150.
- 208 --; 1946 cover with \$10 adhesive cancelled Tientsin on back of advertising envelope, printed on front “Crystal Limited./Manufacturers of High Class Table Waters/Authorised Bottlers of Coca Cola”, sent airmail to Shanghai. 30.
- 209 --; **People’s Republic**; mainly 1950s (a few later) duplicated used on piece (comprising c.650 of 1955-56 Workers defines, c.75 1958 Flowers, and c.125 commems). .. 20.
- 210 --; **Municipal Posts; Shanghai**; small seln. inc. two of 1865-66 (1c and 2c unused, sold “as is”, the 2c certainly a forgery). (11) 20.
- 211 --; **Cinderella**; mixed seln. on pages inc. Anhwei business tax stamps (3 each of 7 different), Manchuria (18), etc. (65).. .. 30.
- 212 **Czechoslovakia**; 1920-38 stockleaf of m.m./u.m., s.t.c.£160. (42) 20.
- 213 --; 1918-81 in three stockbooks with much used, duplication (medium/heavy in some places). Also a tray of 1930s used in envelopes, heavy duplication. (1,000s) ☑ .. 30.
- 214 --; 1922 (Aug.) Air surcharges imperf. selection comprising set (3) u. with inverted opts., four u. with opts. in different colours from normal, 24k on 200h blue with misplaced inverted opt. unu., 24k on 500h unu. with double opt., and 24k on 500h unu. with triple opt. All sold “as is”. 50.
- 215 **Egypt**; 1958-68 u.m. range in pairs on stockleaves. S.t.c.£360. (c.300 stamps) .. 40.
- 216 **Falkland Islands Dependencies**; 1946-49 Thin Map ½d f.u. and 9d m.m., both with “dot in T” variety. SG G9b, G15a, cat.£50 and £55. 20.
- 217 **France**; 1853-1900 mainly used selection of early issues with some duplication. Better values included but mixed condition. High catalogue. (c.140) 40.
- 218 --; 1906-67 (and a few earlier imperfs) m. & u. colln. in printed Yvert & Tellier album with some National Relief Fund sets either m.m. or u.m. (100s) ☑ .. 50.
- 219 --; c.1925-81 selection of generally better items inc. 1925-42 Merson 3f violet & blue m.m., some better 1930s-50s commems, 1943 seln. of Air Post Exhibition cancels on piece, range of 1977-81 Sabine defines u.m. (inc. blocks, gums, phosphors), etc. (100s). Also Andorra 1931 5f f.u. “as is”. 40.
- 220 **France and Colonies**; two albums and two stockbooks of m. & u. from earlies to c.1980 with a few later. Duplication light to medium in French defines. (1,000s) ☑ .. 50.
- 221 **Germany**; two medium stockbooks of Inflation Period u.m. stamps (hinged in margins), much in fourblocks with many upper-left or upper-right corner margins, some lower margins with imprints, etc. S.t.c.£1,200. (c.275 blocks) ☑ 60.
- 222 --; five assorted albums/stockbook, album pages, and loose in small boxes. Wide range of periods represented. (1,000s) ☑ 40.
- 223 --; flat box with many periods m. & u. in two binders, album leaves, and a stockbook (this having UK etc. at the back). (Many 100s) ☑ 40.
- 224 --; a mixture inc. three books (*Deutsche Feldpost 1939-1945* by Hoffman-Geisecke, *Die Feldpost des Zweiten Weltkrieges* by Clement, and *Studien und Dokumente zur Österreichisch-Ungarischen Feldpost im Ersten Weltkrieg* 1989). Also a few military postcards and other items. ☑ 30.

A Buyer’s Premium of 10% (vat-inclusive) will be added to all sale prices.

- 225 **Germany**; 1949-66 m.m. & u. colln. in printed Schaubek album of W.Germany and W.Berlin – earlier is more used, later is more m.m. (100s) ☒ 20.
- 226 --; **East Germany**; 1950-82 in a stockbook, mostly used, with some mint, and duplication (light to moderate in places). Also packets of used – one of 400, other of 600 – stated to be all-different. ☒ 30.
- 227 **Gibraltar**; 1886-1987 m. & u. seln. on stockleaves with some a little better. S.t.c.£227 (c.115) 15.
- 228 --; 1889 25c on 2d unused (no gum) with “broken N” variety (SG 17b cat.£100, closed tear at top), 25c on 2½d used with “small I” variety (SG 18ab cat.£100, tone spots), and 25c on 2½d used with “broken N” variety (SG 18b cat.£100, reperfected at top). .. 30.
- 229 --; 1889-96 Spanish currency set (12) m.m. (some heavy hinges, and 75c poorer), SG22-33 cat.£225. 40.
- 230 **Hong Kong**; 1863-2002 m. & u. selection on stockleaves with some better e.g. 1882-96 4c m.m. (crease), 1907-11 30c f.u., others cat £10+. S.t.c.£1,050. (c.235, 1 m.s.) .. 80.
- 231 --; 1946 Victory \$1 in f.u. fourblock, one with “Extra Stroke” variety. (Variety is SG 17a, cat.£70.).. .. 20.
- 232 --; box of FDCs and presentation packs from 1969 to 2012. Also dupl. inc. min. sheets, 1997 coin set, etc. (100s) ☒ 60.
- 233 **Hungary**; 1871-1975 m. & u. accumulation on album leaves, stockleaves, and binder, duplication light/medium in places. (1,000s) ☒ 40.
- 234 **Indian States; Chamba; Official**; 1927-39 8a (wmk. invtd.), 12a, and 2r, each in u.m. fourblock (lower values off-centre). SG O55w, O56, O58, cat.£212.. .. 40.
- 235 **Israel**; 1949-80 colln. of mainly m.m. in an album, the earlier without tabs. Also includes a few covers, booklets, postcards, etc. (c.1,370) ☒ 30.
- 236 **Italy**; 1945-78 mint (mostly u.m.) in three medium stockbooks, inc. some earlier with 1933 Zeppelin u.m., then 1945 100/ SG 669 u.m., slightly grubby, 1945 Express SG E679-85 u.m., 1948 Express 35/, 1949 Biennial Venice set u.m., UPU u.m., Roman Republic u.m., Concession Letter 15/ u.m., 1950 UNESCO, Florence 55/, Holy Year 55/ u.m., Radio 55/, Tobacco, Rome 55/, Occupations various values inc. 100/ m.m., and other late 1940s/early 1950s cat. in £10s each. Also includes 1961 Presidential Visit 205/ rose unmounted mint but this is sold “as is”. (100s) ☒.. .. £200.
- 237 --; 1945-68 used collection in small printed album, fairly complete inc. 1950 Radio 55/, 1951 Milan Fair 55/, and others in this period cat.£10s. (100s) 50.
- 238 **Leeward Islands**; 1905-08 KE7 set (7) unmounted mint. Crease on 2½d, bend on 1/-. SG 29-35 (cat.£200 for m.m.) 35.
- 239 **Malaya**; used range on stockleaf of Selangor (27), Negri Sembilan (38), Pahang (11), and Straits Settlements (16). Mainly good/fine, some dupl. S.t.c.£900+ 90.
- 240 --; used range on stockleaf of Selangor (87) and Trengganu (15). Mainly good/fine, some dupl. S.t.c.£375+ 24.
- 241 --; **Federated Malay States**; 1900-34 mint selection on stockleaf inc. a few duplicates/shades, and six fourblocks. Mainly fine. S.t.c.£665. (56).. .. 70.
- 242 --; --; 1900-34 used seln. on stockleaf inc. some dupl./shades. S.t.c.£250. (78) .. 15.
- 243 --; **Johore**; 1910-19 set (10) m.m. (5c creased), SG 78-87 cat.£275. Also 1922-41 \$2 m.m., SG 121 cat.£10. 40.
- 244 --; **Kedah**; 1912-62 u. range on stockleaf inc. several better/higher values. S.t.c.£280. (53) 30.
- 245 --; --; 1937-59 mint selection on stockleaf inc. 1937 set (missing \$2) m.m., 1948 S.Wedding \$5 (1 l.m.m., 1 m.m.), 1950-55 seln. of values to \$2 and \$5 m.m., 1957 set (11) m.m. (\$1 poorer), 1959-62 set (12) mainly u.m., etc. S.t.c.£550. (59) 70.
- 246 --; **Postage Dues**; used seln. of Straits Settlements (12), F.M.S. (4), and Malayan Postal Union (14). S.t.c.£155. 20.

Phoning for results ? Note that our shop does not open until noon on a Tuesday, and we do not normally answer the phone on the day after the auction until after that time.

United Kingdom, continued.

- 247 **Malta**; 1882-1009 colln. of mostly used in stockbook, inc. seven A25 cancels on UK stamps, QV values to 5/- (poor), KE7 to 1/-, KG5 to 3/-, various KG6, QE 1956 set u., and so on. Light duplication. (100s) Also small bag of modern kiloware. ☑ 40.
- 248 --; 1898-1998 selection of covers, much from KG6 period inc. "On Active Service", censors, four from QV period, a few ingoing covers. (c.70) ☑ 70.
- ☉ --; see also Collectables (Postcards; Malta).
- 249 **Mauritius**; 1937 Coronation set (3) l.m.m., the 20c with "Line by Sceptre" variety. (Variety is SG 251b cat.£90 for u.m.) 15.
- 250 **Monaco**; Europa miniature sheets for 1974 u.m. (small tone spots) & c.t.o., 1975 c.t.o., 1979 u.m., 1980 u.m. & c.t.o., 1983 u.m., 1984 u.m. & c.t.o., and 1985 u.m. Cat.£366. Also multiples of 1980 postage dues. 30.
- 251 **Montserrat**; 1922-29 various odd values to 6d, 1/-, 2/6 and 5/- fine used. Cat.£158 (10) 40.
- 252 **Morocco Agencies**; 1903-05 20c with the "flat top to C" variety, g.u. but with toning. SG 19d (cat.£225 for mint). 15.
- 253 --; **Tangier**; 1948 Olympics set (4) in f.u. fourblocks, one of the 1/- stamps having the "spot below 9" variety. 15.
- 254 **Netherlands**; 1852-76 range in three small approval books, mainly used and inc. many of medium value inc. 1852-63 5c unu. (cut close), and with medium duplication. (100s) 40.
- 255 --; four different albums and some loose pages, with m. & u. from 1946-98. (100s) 30.
- 256 **New Zealand**; three binders with various contents – covers (much of FDCs of mainly 1990s), stamps, postcards, etc. (100s) ☑ 30.
- 257 **North Borneo; Postage Due**; 1939 set (5) l.m.m. (8c has couple of short perfs, 10c creased). SG D85-89 (cat.£160 for u.m.) 20.
- 258 **Norway**; 1893-1908 and 1909-29 mounted mint selection of Posthorns in small approval book with values to 30ø, 35ø, 40ø, 50ø, and 60ø. (c.100) 30.
- 259 **Poland**; mixed seln. of mainly 1919-50s m. & u. with dupl. (100s) 20.
- 260 --; 1944 National Heroes set (3) u.m. (no gum as issued), 25g centred to left. SG 499-501 cat.£225. 50.
- 261 **Russia and U.S.S.R.**; 1883-1992 colln. in three stockbooks, much used from Soviet period, with light duplication. (1,000s) ☑ 50.

SAINT HELENA

- 262 1856 6d blue imperf g.u. (SG 1, cat.£200, about three narrow margins), 1861 6d blue with rough-cut perforations used with couple of small faults (SG 2a cat.£140), and 1863 4d surcharge g.u. (SG 5, cat.£250, 4 narrow margins). 50.
- 263 1861 6d blue with rough-cut perforations fine mounted mint with full gum (slightly disturbed), light pencil mark on reverse, centred to left (SG 2a cat.£425). Also 1863 1d surcharges with both short and long bars - the first fine m.m. with four margins, second is m.m. with part gum and four narrow margins (SG 3 cat.£150, 4 cat.£160). .. £120.
- 264 1864-80 fine range of mint surcharges on two pages comprising perf.12½ 1d (8), 2d (4), 3d (2), 4d (4), 1/- (2), 5/- (5). Mainly fine. Identifications seem ok, but not checked individually. £240.
- 265 1864-80 used selection comprising 1d (5), 2d (3), 3d (3), 4d (3), 6d (3), 1/- (4), and 5/- (1). Mainly good/fine. Identifications seem ok, but not checked individually. .. £120.
- 266 1864-80 2d yellow perf.14 x 12½ in fine mint block of six (3 x 2). Almost full gum, mounted, horizontal wrinkle near foot. SG 22, cat.£140 each = £840. .. £150.
- 267 1864-80 1d lake perf. perf.14 in fine mint block of six (3 x 2), full gum, moderate hinges. SG 27, cat.£120 each = £720. £150.
- 268 1864-80 1/- yellow-green perf.14 in fine mint block of six (3 x 2). Full gum, mounted, perfs strengthened at foot. SG 30, cat.£21 each = £126. 30.

A Buyer's Premium of 10% (vat-inclusive) will be added to all sale prices.

SAINT HELENA, continued.

| | | | | |
|-----|--|----|----|---------|
| 269 | 1884-94 m.& u. selection of all values inc. a little dupl. (31) | .. | .. | 70. |
| 270 | 1884-94 ½d, 1d, 2d, and 3d, each in m.m. sixblock (3x2 or 2x3), the perfs splitting on 3d block. SG 36, 37, 39, 41, cat.£106½. | .. | .. | 24. |
| 271 | 1890-97 QV set (7) m.m. (2d thinned), same set used (1½d poorer, top two values with remainder cancels), and five odds with mixed cancels. | .. | .. | 40. |
| 272 | 1901 cover from South Africa addressed to "Mr V von S Sädler, Prisoner of War, Deadwood Camp, St. Helena". C.o.G.H. 1d stamp cancelled Kimberley, St. Helena c.d.s., and circular "CENSOR/BELLE VUE/PRISONERS OF WAR". Addressee stated to be member of Scandinavian Corps V. A little general toning, stain at one corner, and a photo-corner stuck inside back flap. | .. | .. | 50. |
| 273 | 1902 set (2) both m.m. and u., 1903 set (6) m.m. (plus extra ½d and 1d, couple of small faults). Cat.£128. | .. | .. | 20. |
| 274 | 1903 set (6, plus extra ½d, 1d) f./v.f.u. (couple of minor perf faults). SG 55-60 cat.£150+ | .. | .. | 40. |
| 275 | 1902 KE7 ½d green u.m. part sheet of 100 (10 x 10, folded) with some slight creases (SG 53, cat.£200). Also 1908-11 KE7 2½d u.m. block of 12 (4 x 3) (SG 64 cat.£24). | .. | .. | 30. |
| 276 | c.1904-71 selection of nine covers and cards. | .. | .. | 30. |
| 277 | 1906 registered envelope with six 1903 KE7 stamps affixed (4 x 1d, 2 x 2d), addressed to London. Cover has had the registration printed text scribbled through in blue crayon, plus manuscript "Too late for Registering" and "unregistered". Plymouth Ship Letter c.d.s. on reverse. Some faults. | .. | .. | 30. |
| 278 | 1908-11 KE7 set (4) fine m.m. The 10/- is fine m.m., well-centred, medium hinge. SG 64, 66, 67, 70, cat.£275. | .. | .. | 90. |
| 279 | 1908-11 KE7 set (4) fine used. The 10/- is attractive v.f.u., with minor bend at upper-left, and has Brandon certificate (1981) stating "genuine". SG 64, 66, 67, 70, cat.£325, | .. | .. | 90. |
| 280 | 1912-16 set (10, plus 1d shade) m.m./l.m.m., SG 72-81, cat.£160. | .. | .. | 40. |
| 281 | 1912-16 set (10, plus extra 1d) fine used (the 1½d m.m.), the 3/- a touch poorer. SG 72-81, cat.£350. | .. | .. | 80. |
| 282 | 1912-16 ½d u.m. block of 20 (4 x 5), 1d u.m. marginal block of 25 (5 x 5), 2½d u.m. marginal block of 25 (5 x 5), and 3d u.m. marginal block of 30 (6 x 5). Mainly fine but a few minor imperfections. SG 72, 73, 76, 77, cat.£356. | .. | .. | 80. |
| 283 | 1912-35 m. & u. seln. of KG5 on a few pages inc. 1922 set (3) m.m., same set fair u., 1935 Jubilee set both m.m. and f.u., etc. (26) | .. | .. | 60. |
| 284 | 1912 registered cover with 1902 KE7 set (2) and 1908-11 2½d, 4d, 6d cancelled St. Helena c.d.s. London and French backstamps. Corner off reg. label. | .. | .. | 20. |
| 285 | 1912 4d u.m. marginal block of 24 (6 x 4) SG 83 cat.£360, and 6d u.m. marginal block of 30 (6 x 5, some tone spots) SG 84 cat.£127. | .. | .. | 70. |
| 286 | 1919 War Tax 1d u.m. marginal block of 40 (8 x 5) SG 88 cat.£80, and 1922 1d green u.m. marginal block of 30 (6 x 5, toning in margin) SG 89 cat.£97. | .. | .. | 30. |
| 287 | 1922-37 wmk. Mult. Crown CA set (5) fine l.m.m./m.m. The 2/6 has a small natural black spot in the paper, the £1 is an excellent l.m.m. example. SG 92-96 cat.£500. | .. | .. | £180. |
| 288 | 1922-37 wmk. Mult. Crown CA set (5) f.u./v.f.u. The 2/6 v.f.u. with central c.d.s., 5/- f.u. centred to lower-right with corner cancel, and the £1 v.f.u. on small piece, well-centred with c.d.s. at foot. SG 92-96 cat.£900. | .. | .. | £260. |
| 289 | 1922-37 wmk. Mult. Script CA set to 15/- (16 plus 1½d shade) fine l.m.m./m.m. All are fine except 1½d rose-red (short perf), 6d (tone spots), 10/- (two perfs missing at top), and 15/- (small tone spots at edges, otherwise fine appearance and well-centred). SG 97-113 cat.£1,615. | .. | .. | £220. |
| 290 | 1922-37 wmk. Mult. Script CA set to 15/- (16 plus 1d shade) fine/very fine used. All fine but for 5d (green colour run), 1/- (short perf), 5/- (paper remains on reverse), and 7/6 (touch of toning at foot). The 15/- is very fine and well-centred, on small piece. SG 97-113 cat.£3,500. | .. | .. | £1,000. |

SAINT HELENA, continued.

- 291 1922-37 "Broken Mainmast" variety on ½d m.m. (centred left), 3d l.m.m. (touch of toning), and 4d m.m., SG 92a (cat.£275), 97a (£85), 101a (£130). Each of these in pair with m.m. normal. £100.
- 292 1922-37 "Torn Flag" variety on ½d and 8d, m.m., SG 97b (cat.£275), 105b (£200), each in pair with normal, and with some light tone spots. 30.
- 293 1922-37 "Cleft Rock" variety on ½d, 1d, 1½d, 2d, 3d, and 8d m.m./l.m.m., all lower-left marginal, all but the first two in pairs with normals. (3d with bend, and split perfs). SG 97c (cat.£75), 98c (£75), 99c (£95), 100c (£150), 101c (£110), 105c (£180). .. £160.
- 294 1934 Centenary set (10) fine l.m.m./m.m. (a little adhesion at top of reverse of 2/6 just shows from front). SG 114-123 cat.£425. £120.
- 295 1934 Centenary set (10) v.f.u. (10/- centred partly to right). SG 114-123 cat.£475. .. £150.
- 296 1934 Centenary selection of mint blocks comprising ½d (sheet of 60, folded), 1d (block of 12), 1½d (6), 2d (4), 3d (8), and 6d (8). Cat.£162. 30.
- 297 1937-81 collection on pages with KG6 complete both m.m. & u., the QE about complete mint (u.m. from 1971). Includes 1962 4/6 booklet. (c.280, 1 bkt., 14 FDCs) .. £100.
- 298 1970 typed letter headed Sandringham, Norfolk, giving royal approval for the designs for Red Cross issue. Sticky tape at two sides, tape stains on other two, and punch hole. 10.
- 299 **South Africa; Cape of Good Hope**; 1855-64 set of four Triangulares good/fine used with two to three margins, in presentation box. ☒ 70.
- 300 --; **Transvaal**; 1902 original set (no 3d, 4d) heavy m.m., mixed condition. SG 244-47, 250-55, cat. c.£240. 24.
- 301 **South Africa**; 1939 Huguenot set (3 pairs) u.m., and same set overprinted for South West Africa u.m., cat.£50 and £65. 20.
- 302 --; 1941-46 War Effort 1d with "stain on uniform" variety, and 3d with "cigarette flaw", both good used. SG89a, 91a (cat.£55 and £225 for used pairs). 20.
- 303 **South Arabia; Qu'aiti State in Hadhramaut**; 1966 Churchill 15f in u.m. sheet of fifty. SG 67, cat.£425. 20.
- 304 **Swaziland**; 1961 seln. of surcharges inc. 10c and 2r (type I, and type II middle) l.m.m., and a few others. S.t.c.£85. 15.
- 305 **Switzerland**; five approval books of m. & u. inc. some better sets. Vendor states remainder PTSA €1,000+. (100s) ☒ 35.
- 306 --; 1900-67 (a few earlier) m.m. & u. colln. in printed Minkus album, with many Pro Juventute. (100s) ☒ 24.
- 307 **Tanganyika; Mafia Island**; 1917 1a with black opt l.m.m., SG M45 cat.£120. Looks ok, but sold without guarantee. 20.
- 308 **Tibet**; 1911 3p, ½a, 2a, 2½a, 3a, and 4a all unused without gum. The 3p thinned, others with some minor faults. SG C1-2, C4-7, cat.£510. 70.
- 309 --; 1911 3p, 3a, and 4a all used – 3p with perf faults, 3a slightest toning, and 4a with small crease and tone spot. SG C1, C6, C7, cat.£250. 50.
- 310 **Trinidad**; 1896-1906 5/- and £1 fresh m.m. but with a bit of creasing. SG 122, 124, cat. £260. 40.
- 311 **Tristan da Cunha**; 1957 postage due 4d with "broken d" variety u.m., SG D4a cat.£60. 15.
- 312 **Turkey**; commercial covers addressed to BBC Istanbul, mainly c.d.s. cancels from all over Turkey, dated around 1985. (c.900) ☒ 30.
- 313 --; 1950-64 FDCs, light duplication. (c.250) ☒ 24.
- 314 **Union of Soviet Socialist Republics**; binder with 1977-80 Olympic Golden Cities eight issues in u.m. singles/fourblocks and used. Also 1980 Olympics nine issues 1976-80 u.m., used, and covers. (100s) ☒ 40.

A Buyer's Premium of 10% (vat-inclusive) will be added to all sale prices.

- 315 **United States of America**; box with three albums, album leaves/stockleaves, loose inc. blocks, etc. (Many 100s) ☒ 30.
- 316 --; 1983-84 boxed set of 39 different souvenir covers, each with medallion, for all Presidents from Washington to Reagan (Cleveland counts as one !). ☒ 20.
- 317 --; **Thematic**; written-up pages of stamps, covers, postcards, and booklets etc. on the theme of the Civil War – places, battles, people, etc. (100s) ☒ 30.
- 318 --; --; written-up pages with stamps, covers, postcards etc. on theme of Abraham Lincoln, and a bundle of covers. Also similar pages on National Parks etc. and J.F. Kennedy (which includes non-USA items). ☒ 30.
- 319 --; **Covers**; large binder of *Golden Replicas of US Stamps* 1991-95 on covers (75), large binder with Reader's Digest FDC colln 1980-84 on printed pages (c.50), and *The American Revolution Bicentenary* FDC colln. of world covers (c.30). [1a] 20.

United Kingdom

- 320 1837 John Dickinson "London District Post" essay for prepaid envelope, One Ounce/One Penny design in yellow-buff on silk thread paper. Fine, with just a couple of small spots. A scarce item from the period running up to the introduction of adhesive postage stamps. £100.
- 321 1840 Penny Black FA plate 2 g.u. (4 margin, red MC, minor creasing), and 1840 Twopence Blue QE used (which looks good with four margins and black MC, but has almost certainly been treated or enhanced in some way – paper is soft). 60.
- 322 1840 Penny Black RJ plate 4 f.u. (4 margins, red MC, on very small piece), and 1840 Twopence blue JL g.u. (3½ margins, indistinct black MC). £100.
- ➡ 1840 Mulready; see after UK Postal History.
- 323 1841 Twopence Blue with white lines added, attractive mint horizontal pair FE-FF. Four margins – good to wide at top (showing neighbouring stamp towards left), good and even at right, wide to narrow at foot, and narrow at left. Some gum showing on reverse, but most of the back is covered by paper remains. Possibility of a small thin at left. Attractive pair, SG 14, cat.£5,000 each as mint (£18,000 as pair in 2011 *GB Specialised*). £500.
- 324 1841 Penny Red imperf f.u. with town postmark in bluish black (not a true blue as catalogued). Four margins of varying width. SG 80 cat.£825 (blue would be £2,700). £100.
- 325 1841-79 useful range of line-engraved in stockbook, from 1841 penny red imperfs with numeral MC cancels (6 different), penny reds on piece with better Scottish postmarks (dotted circles, Brunswick Stars, Glasgow "Madeleine Smith", Scots Locals, rollers, etc.), penny red stars sorted and annotated, penny red stars mint (5), a few mint penny red plates, ½d plates, 1½d plates, etc. (c.300) ☒ £300.
- 326 1847-54 Embossed 6d sound used, cut square with margins very close or just touching. As well as original UK cancel (not clear) this also has "3½/GROSCHEN" stamped across. 40.
- 327 1854-1913 QV and KE7 collection in stockbook, with a few line-engraved, 1847-54 embossed 6d and 1/- g.u. cut square, then a useful range of surface-printed inc. a few in better than average quality, 1867-80 3d plate 9 mm. (pale), 10d with SPECIMEN opt (no gum), 1873-80 1/- plate 11 m.m., 1883-84 5/- f.u., 10/- g.u., basic range of later QV and of KE7. (200+) ☒ £400.
- 328 1858-79 Penny Red plate 94 fine mint block of 15 (3 x 5), mainly unmounted. Cat.£975. £120.
- 329 1858-79 Penny Red plate 198 in two lower marginal pairs with inscription - originally a strip of four. Also the two mint fourblocks which would have been above these. Mainly fine (one stamp has hole, two others with small spots). £100.
- 330 1858-79 Penny Red plate 181 very attractive fourblock with neat Canterbury M.O.O c.d.s. cancels. 20.

Remember the Buy or Bid Sale, which runs from 5pm until 5 minutes after the main auction finishes - you can buy items outright at the "buy" price, or place a bid at or above the "upset" price.

United Kingdom, continued.

- 331 1867-80 2/- brown – a dubious used example. Appears quite nice at first sight, but has been Rather amateurishly reperforated at right and at foot (with corner letters AD, this should be a wing margin example, but is not), the cancel is unlike standard cancels of the period, and the watermark is less distinct than normal, the paper appearing to be softer. There is also a small thin. Crucially there is no certificate. (Genuine would be SG 121 cat.£4,250). Sold “as is”. 50.
- 332 1870 1½d plate 1 fine mounted mint (crackled gum). Cat.£725. 80.
- 333 1883-84 5d dull green attractive mint lower marginal, mounted on margin only. Good appearance but some small tone spots visible only from back. SG 193 cat.£580. .. 50.
- 334 1884 £1 brown-lilac with watermark Three Imperial Crowns. A used spacefiller example, with lower-left corner missing, medium-heavy cancels, and small scuff at right. SG 185 cat.£3,000. 70.
- 335 1887-90 “Jubilee” set (14) m.m. Generally fine, but odd ones poorer or without gum – the 5d no gum, 6d m.m., 9d m.m., 10d heavy m.m., 1/-green m.m., and 1/- green and red toned and without gum. SG 197-204 cat.£650. 60.
- ➡ Queen Victoria stamps; see also UK Postal History.
- 336 1911-36 stockbook with mix of KG5 inc. a seln. of marginal controls (mainly pairs or three-strips, and inc. 1929 PUC set of 4), a few postage dues, etc. (300+) ☑ .. 60.
- 337 1912-24 wmk. Royal Cypher set (missing 2½d) all mounted mint lower marginal and with control numbers (but ½d plain). 1d, 1½d, 3d, 4d, 5d with some toning. (14) .. 30.
- 338 1924-37 selection of 1½d stamps from booklets inc. 1924 mint block (2 stamps, 2 advert labels), 1934 (5 mint blocks, each of two stamps and two advert labels), 1935 Jubilee (6 mint panes), 1936 KE8 (5 mint blocks, each of 2 stamps and 2 advert labels), 1937 used pane (4 stamps, 2 advert labels), and 1937 (8 blocks of 2 stamps and 2 labels each). 70.
- 339 1929 PUC £1 sound used. Quite decent appearance, well centred with good perfs but with diagonal crease and some very light toning. SG 438 cat.£550. £100.
- ➡ 1949 UPU variety; see First Day Covers.
- 340 1952-90s stockbook of Wildings and Machins inc. 1952-54 Tudor set (17) u.m., 1955-58 Edward Crown set (18) u.m., 1958-59 graphite set (8) u.m., some inverted or sideways wmk., booklet panes, etc., and lesser range of Machins. Identifications seem correct but not everything checked. (100s) ☑ 80.
- 341 1960 GLO 3d cylinder block of eight u.m., one with the “Broken Mane” variety (SG 619a cat.£70)... .. 20.
- 342 1965 United Nations 3d u.m. pair with phosphor bands printed on gum (as well as on front as normal), one stamp damaged. 10.
- 343 1967-2018 specialised collection of Machins in two *Windsor* albums (though with some extra pages going into more depth), u.m. plus a few used. Decimal mint face c.£335. (100s). Also *The Colourful Art of Arnold Machin* (Royal Mail publication). ☑ .. £200.
- 344 A few Machin varieties inc. 1967 5d tête-bêche pair u.m. (small marks on reverse), value trial denominated “00P”, pair of self-adhesive “1st” with misplaced “perforation” cuts, three with elliptical perfs placed high... .. 30.
- 345 1970-72 £1 Machin imperforate pair u.m., left marginal. 20.
- 346 1970-72 £1 Machin imperforate pair u.m. 20.
- 347 1971-on Machins mainly u.m. in stockalbum, moderately specialised and with identification tabs. Mint face c.£285. A few used also. (100s) ☑ ▲ £165.
- 348 1993-2012 Machin £2 (De La Rue, gravure) deep blue green u.m. cylinder sixblock, one with the “missing £ sign” variety. SG Y1747a, cat.£225 for single variety. .. 50.
- 349 1995-2010 seln. of 22 different Boots (or similar) 1st Class labels, mostly with overprints for stamp exhibitions. 20.

Alternative bids, and overall spending limits, are acceptable. Advice available if required !

A Buyer's Premium of 10% (vat-inclusive) will be added to all sale prices.

United Kingdom, continued.

- 350 **Miniature Sheets**; 1978-2013 duplicated stock in two file boxes, with up to 50 each in the earlier issues, and c.15 each later, then less than 10 each from 2006 onwards. Face value c.£1,810. (c.745). ☒ ▲ £1,050.
- 351 --; 1978-2011 on printed pages u.m. (62, in photocorners), plus a further 19 loose to 2013. Face value c.£260. ☒ ▲ £150.
- 352 --; 2005-17 u.m. seln. in box, light dupl., face value c.£120. (c.28) ☒ ▲ .. 80.
- 353 **Country Stamps**; stockbook of mainly u.m. singles or blocks of pre-decimal issues, but with main value in German Occupation of Channel Islands. Guernsey includes 1941-44 Arms m. & u. seln. with shades and ½d imprint block of 12, bluish paper (2 of each mint), Jersey has 1941-42 Arms singles (shades), and six imprint blocks, 1943-44 pictorials dupl. m. & u. ☒ £100.
- 354 **Smilers Sheets**; 2000-01 duplicated u.m. stock comprising 1000 Stamp Show (4), 2000 Christmas LS2 (2), LS3 (2), 2001 Occasions (2). Cat.£1,240. £120.
- 355 **Booklets**; 1970s-c.2000 duplicated stock inc. some which are panes only, and a few pre-decimal. Face value c.£1,630, of which c.£1,390 is in 1st/2nd NVIs. (c.355 booklets) ☒ ▲ £950.
- 356 --; 1955-79 collection of booklets in album, with some useful 1950s/early-1960s, inc. 1961 10/- (no date), and decimals with face c.£34. (c.234) ☒ £200.
- 357 --; 1969 (March) 6/- Jay booklet with gum arabic on second pane, fine with decent perfs. SG (Spec.) QP47(b) cat.£80. 20.
- 358 --; 1971-76 complete range of decimal stitched booklets comprising 10p (30), 25p (15), 30p (21), 35p (5), 45p (5), and 50p (14). 30.
- 359 --; useful mixed lot of decimal booklets and panes inc. complete set of 14 stitched 50p, six miscut early decimal folder bkts., pane DP9 with missing perf pin, etc. (38 items) 40.
- 360 --; **Prestige Stamp Booklets**; 1972-2012 (Dahl) almost complete run (missing two), with two later, and with duplication up to eight of each. Face value c.£1,110. (c.132) ☒ ▲ £650.
- 361 --; --; 1989-2010 complete run with one duplicate. Face value c.£486. (43) ☒ ▲ £280.
- 362 --; --; 1969-2004 (Letters by Night) complete run. Decimal face c.£294. (33) ☒ ▲ £170.
- 363 **Presentation Packs**; 1964 Forth Road Bridge pack fine and flat. £120.
- 364 --; 1964 Forth Road Bridge pack fine with just a slight warp. £110.
- 365 --; 1964 Forth Road Bridge pack complete but the two stamp carrier strips have been reattached, and the cellophane sleeve is possibly from a slightly later pack. .. 90.
- 366 --; 1964 Geographical and Botanical packs – two of each in poor to fine condition. 60.
- 367 --; 1977 Machin high values in “long pack” (no.13). Cat.£170. 30.
- 368 --; a similar lot. 30.
- 369 --; 1997 Castles high values pack (no.40) – 5 examples, cat.£150 each. .. 90.
- 370 --; 1997 Castles high values pack (no.40). Cat.£150. 30.
- 371 --; 16 different modern “Post Office Missed” packs for issues 1937-77. .. 50.
- 372 --; 1982-96 two binders of Harrison’s packs, each mounted on page. (c.100) ☒ 80.
- 373 **Presentation Pack Collections**; 1964-70 collection in album with commems, defin, and country issues. Includes 1964 Geographical and Botanical (both fine and flat) and other useful. (c.40) ☒ £100.
- 374 --; 1971-2013 collection of commem, defin, and country issue packs in 11 Royal Mail and 7 other albums, all in two heavy cartons. Duplication up to four of each. Face value c.£2,075. [1a] ▲ £1,200.
- 375 --; 1971-2018 collection of commemorative packs in two boxes (in Royal Mail p.pack or cover albums), almost complete (missing 1989-96 Greetings and a few others). Face value c.£1,600. (c.500) ☒ ▲ £920.
- 376 --; 1974-2010 collection in six Royal Mail albums and four other albums, with commems, defin, and country issues (c.490 packs). Also loose country issues and miniature sheets on cards. Total face value c.£1,500. ☒ ▲ £880.

Material accepted for future sales – please make an appointment if you would like to discuss your lots.

United Kingdom, continued.

- 377 **Presentation Pack Collections**; 1971-2017 colln. of defin and country issues in three albums. Light dupl. Face value c.£650. (c.140 packs) ☒ ▲ £370.
- 378 --; 2010-13 duplicated lot of *Post & Go* packs with up to five of each. Face c.£209. (57) ☒ £120.
- 379 --; 2010-17 small colln. of *Post & Go* packs with light dupl. Face c.£95. (23) ☒ .. 65.
- ➔ **Presentation Pack Stocks**; the following lots are from a massive stock, the commemoratives divided into suitable lots by decade. The face value calculations are our own work and our “workings” are available for most. The lots are in numerous boxes, sorted in order, and have reasonably deep duplication throughout, sometimes as many as about 40 of each. All the decimal “postage” lots will be sold using smaller bid steps.
- 380 --; 1964-70 commems, defin, and country issues (c.950 packs). Also 1967-70 year packs (17), and five of the 1969 Cooks booklet. [1a] £300.
- 381 --; 1971-79 commems, face value c.£480. (c.1,450 packs) [1a] ▲ £240.
- 382 --; 1980-89 commems, face value c.£2,330. (c.2,450 packs) [1a] ▲ £1,250.
- 383 --; 1990-99 commems, face value c.£4,230. (c.2,530 packs) [1a] ▲ £2,400.
- 384 --; 2000-09 commems, face value c.£9,400. (c.2,500 packs) [1a] ▲ £5,200.
- 385 --; 2010-13 commems, face value c.£1,720. (c.330 packs) [1a] ▲ £1,000.
- 386 --; 1970-2013 stock of defin and country packs, with up to 30 of each of the earlier packs, all in six shoeboxes or similar. Face value c.£3,060. (c.960 packs) [1a] ▲ £1,750.
- 387 --; 1971-93 dupl. stock of year packs with up to ten of each. Face c.£345. (c.100) ☒ ▲ £200.
- 388 --; 1984-2008 duplicated stock of year books with up to three of each, in two boxes. Face value c.£845. (44 books) [1a] ▲ £480.
- 389 --; a tub of duplicated Royal Mail special/souvenir packs. Also some airletters. ☒ 50.
- 390 --; dupl. stock of postage due packs comprising 1970 pack 36 (9), pack 93 (14), 1982 pack 135 (9), and 1994 pack 32 (7). Also loose stamps on cards. ☒ 40.
- 391 --; **Reproduction Packs**; duplicated stock comprising Penny Black (17), PUC (5), Penny Red (5), Olympics (3), and Seahorses (5). ☒ £150.
- 392 **Propaganda Forgeries**; German WW2 forgery of UK KG6 defin 3d “unused” (no gum). 30.
- 393 **UK Postage Material**; 1971-2010 commems in six stockbooks and a binder, with multiples – higher numbers in early years, lower later on. Face value c.£1,870 for complete sets, with 48 sets having extra values which are not in this total. ☒ ▲ £1,100.
- 394 --; 2008-18 commemoratives, and 1988-2018 defin and country stamps, on stockleaves and stockcards. Also some PSBs. Total face value c.£1,570. Also UK used, UK on paper, and some coins etc. ☒ ▲ £920.
- 395 --; loose on stockcards etc. inc. 1994-2008 commems (no m.s.) and defin, country stamps, etc. Face value c.£1,225. ☒ ▲ £700.
- 396 --; lot of 1st class NVIs only – duplicated 1st gold, 2003 Fruit & Veg sheet, 2004 Tolkien sheets, 2012 Olympic Winners sheets, Smilers sheets, etc. Face c.£1,050. (c.1,500) ☒ ▲ £600.
- 397 --; booklets, sheets, etc., with face c.£360. Also a sparse *Windsor* album, FDCs in two albums, etc. ☒ ▲ £210.
- 398 --; mix in year packs and duplicated PSBs. Face c.£165. ☒ ▲ 95.
- 399 --; small stockbook with commems etc. Face stated by vendor at c.£100. ☒ .. 55.
- 400 **First Day Covers**; 1934 ½d fourblock, 1d three-strip, and 1½d, each on printed “Philatelic Adviser” envelope (1d and 1½d envelopes slit open, 1d pmk. not so clear). Also five other plain FDCs. 20.
- 401 --; 1949 UPU 2½d vertical pair on plain FDC, one with the “Lake in India” variety, Brechin c.d.s. (Variety is SG 499b – cat.£100 for u.m.) 20.
- 402 --; 2012 Olympic Winners set of 29 sheetlets of six, all on Royal Mail covers with Olympic Park cancels. ☒ 30.
- 403 **First Day Cover Collections**; 1990-2018 standard bureau covers in nine Royal Mail FDC albums with commems, defin, and country issues, all in a heavy carton. (c.550) ☒ £400.

A Buyer's Premium of 10% (vat-inclusive) will be added to all sale prices.

United Kingdom, continued.

- 404 **First Day Cover Collections;** 1975-2010 (and a few earlier) collection of bureau covers in six R.Mail albums and two other albums, with commems, defines, PSB panes. (c.550) ☒ £100.
- 405 --; 1953-82 in five various binders and loose. Various cancels to 1963, then mostly Edinburgh FDI to 1974, then standard bureau covers. Includes some illustrated typed earlier inc. 1953 Coronation, 1957 Scouts (Sutton Coldfield), Parliamentary (Bury machine cancel), etc. Light duplication. Some marks from storage. (c.350) ☒ 50.
- 406 --; 2016-17 (and two 2014) small box of Royal Mail covers with alternative cancels. (38) ☒ 40.
- 407 **Philatelic Numismatic Covers;** 1994-2000 selection of Benham coin covers, with a wide variety of coins (mainly non-UK), many of the covers autographed. (59) ☒ .. £120.
- 408 --; 1993-2003 collection in album of Royal Mail, Royal Mint, and Mercury covers. Face value of UK coins £60. (27 UK, 1 Australia) ☒ 70.
- 409 **Philatelic Covers;** flat box with covers and a few cards, much is 1980-82 small covers with special handstamps to Postmark Club, York. (Few 100s) ☒ 30.
- 410 **Autographed Covers;** 1964 Aldershot Philatelic Exhibition souvenir cover signed by Prince Carol and Princess Jeanne of Romania. 20.
- 411 --; 1996 Football illus. FDC (Benham) signed by Sir Stanley Matthews. Also 1979 Year of the Child illus. Benham FDC signed Christopher Milne. 10.
- 412 **Scotland Covers and Postal History;** 1856-78 attractive bundle of covers all with penny reds (two with 2d blues) with a range of selected postmarks. Includes Edinburgh Brunswick Stars (3), Scots Locals (6), Edinburgh 131 rollers (8), Glasgow Madeleine Smith (3), Glasgow 1856 duplex with small "159", and various other duplexes (inc. distinct types) and others. (Total 37) £120.
- 413 --; 1869 attractively messy cover with 1867-80 6d plate 8 cancelled Crieff duplex, then apparently chasing a tourist around Europe, with postmarks on the reverse including Venice, Florence, Milan, Luzern, and Vienna. Fifteen postal markings in total ? Quite worn. 30.
- 414 --; 1903-12 useful little collection of Clyde Steamer cancels comprising 1903 MacBrayne postcard with stamp cancelled GK & ARDRISHAIG PACKET/COLUMBA large twin-arc c.d.s. with code "A", 1905 card with similar c.d.s. code "A", 1911 and 1909 cards with similar Columba smaller c.d.s. cancels codes "A" and "B", 1912 card with similar cancel for the *Iona*, 1908 pc with Greenock cancel and black oval R.M.S. "LORD OF THE ISLES" dated "garter" cachet, 1910 similar card with same cachet in lilac, 1905 card with GRENADIER large twin-arc c.d.s., 1911 card with smaller version of same, and 1905 card cancelled Inveraray with lilac undated cachet POSTED ON BOARD S.S. "FAIRY QUEEN". Generally fine strikes. (10 items) ☒ £150.
- 415 --; 1906 postcard of Tarbert with stamp cancelled by fine strike of GK & ARDRISHAIG PACKET/COLUMBA large twin-arc c.d.s. with code "A". 15.
- 416 --; 1911 two postcards each with scarce "WOODHEAD CAMP/KK" c.d.s. (cards are RP camp scenes). Also a few other cards and covers, inc. one 1909 Dundee to Burma redirected back to Scotland with two different "Réexpédié" handstamps. (19) 30.
- ➡ --; see also Collectables (Postcards; Scotland).
- 417 **U.K. Covers and Postal History;** interesting and useful range of covers, mainly 1800s-60s English, including many selected items, unusual types, etc., and generally fine strikes. Includes experimental duplexes, sideways duplexes, non-standard numeral or killer types, undated circular, numeral in MC (2 on penny reds, 1 on penny pink envelope), Metropolitan Life Assurance private "POST PAID", penny posts, "too late", two with ½d plate with boxed "CONTRARY TO REGULATIONS/S.W", etc. (c.100) ☒ £300.
- 418 --; 1751 large part cover with very fine strike of Dockwra style triangular mark, code "W" for Westminster. Manuscript "Frith" (name of one of the Receivers). .. 30.
- 419 --; 1764 cover from France to London with excellent strike of Bishop Mark applied by the Foreign Section (month above day). Also 1776 entire to Norwich with very fine strike of Bishop Mark, with receiver's "F" in circle to side. 40.

United Kingdom, continued.

- 420 **U.K. Covers and Postal History**; 1787 entire Oxford to Cheshire with mainly very fine strike of scarce “57 OXFORD” single-line in black, marked manuscript “Cross Post” at corner. 20.
- 421 --; 1802-21 selection of covers all with mileage marks. Mainly English, but one each Scottish and Irish included, and generally of selected quality. (12) 60.
- 422 --; 1823-32 album of covers, inc. a number with the Scottish Additional Half mark, otherwise a general mix of standard markings. Some dirty. (c.80) ☒ £100.
- 423 --; 1826-44 seln. of covers with an impressive variety of different types of PAID marks inc. distinctive circular Manchester, “squashed oval” Bradford, oval Halifax, PAID AT DERBY 1d, boxed Tullamore and Ballymena, etc. Mainly fine/very fine strikes. (15 covers, 1 front) £100.
- 424 --; 1835-47 seln. of four Ship Letter covers comprising 1835 with black stepped box PORTSMOUTH/SHIP LETTER, 1835 with red oval PAID SHIP LETTER/(crown)/11JY11/1835/LONDON, 1839 with black two-line LIVERPOOL/SHIP LETTER, and 1847 dark blue chamfered oblong HULL/SHIP-LETTER/Δ.10.AU.1847. All fine/very fine strikes. 80.
- 425 --; 1840 (9 June) cover to London with Penny Black IE plate 1A (2 narrow margins) tied by two red MCs. Ramsgate backstamp. 40.
- 426 --; 1841 (Jan 27) neat cover to Chester with Penny Black ID (plate 6, 4 good margins, small blemish lower-left), loosely stuck over manuscript *Post Paid* at corner of envelope, tied by red MC. Cover has two-line *Bowness/Penny Post* at upper-left, and Kendal backstamp. Also three covers with Penny Red Imperfs. £100.
- 427 --; 1841 (19 Apr.) part cover London to Banff with Penny Black AG plate 8 (4 decent margins) tied by black MC. Black two-line “PP/King William St” beside stamp (a bit unclear), Banff boxed datestamp on reverse. 60.
- 428 --; 1841-49 (mainly 1841-43) selection of covers all with Penny Red imperfs, the majority with MC cancels, and probably inc. some from black plates. Interesting mix with various markings, some adhesives of interest. (27, 1 front) £100.
- 429 --; c.1844-90 stockbook of stamps or stamps on piece with numeral cancels, various other types inc. Pearson Hill, Charles Rideout, Azemar (both types with different positions of datestamp, Scottish duplexes, etc. Generally fine quality. (c.120) ☒ £150.
- 430 --; 1848-84 selection of registered mail with mixed stamps and markings (7 covers, 2 fronts). Also 1937 cover (toned) with MPO cancels and manuscript MOBILE/POST OFFICE/LEICESTER/RACES reg. label (last word probably later addition). 50.
- 431 --; 1852 entire to Genoa franked 1841 1d red imperf (3 large margins) and 1847-54 1/- embossed (cut square – large margin at left, other sides touching or just cut-into) with London “10” numeral cancels, other markings. 50.
- 432 --; 1853 cover to Moscow franked 1847-54 embossed 1/- (cut square – margins on two sides, touching at others, tiny tear at top) cancelled English “107”, other markings front and back. 50.
- 433 --; 1854-62 excellent collection of “spoon” duplex cancels on covers inc. Belfast (3 different), Bridgenorth, Burton Upon Trent, Hull sideways, Leamington, a number of Liverpool (inc. one on 1/- adhesive), Reading “biscuit”, Warrington, and Wolverhampton. Generally good quality. (46) £200.
- 434 --; c.1854-60 collection in stockbook of postmarked stamps on piece, generally above-average quality. Largest numbers are spoon cancels (good range inc. scarcer e.g. Bridgenorth, Burton Upon Trent, Chester, Dudley, Kidderminster, Leamington, Northampton, Oswestry, Walsall, Warrington. Others of note inc. Hull and Liverpool spoons on penny red imperfs, sideways duplexes, several Irish spoons, Rugby “shoe”, etc. (c.155) ☒ £240.
- 435 --; 1860-77 selection of eight covers to foreign addresses viz 1860 to Demerara (6d adhesive), 1867 to Lyons (4d), 1868 to Firenze (6d), 1868 to Paris (2 x 2d), 1871 to New York (3d), 1873 to Paris (6d), 1873 to Valencia (6d), and 1877 to Stavanger (2½d). Mainly fine. 80.

A Buyer's Premium of 10% (vat-inclusive) will be added to all sale prices.

United Kingdom, continued.

- 436 **U.K. Covers and Postal History**; 1861 entire to Beziers with 1855-57 4d (Large Garter, white paper) cancelled by fine Jersey duplex. French backstamps. .. 40.
- 437 --; 1863 super little cover London to New York being a Penny Pink envelope with marginal Penny Red Star beside, plus a further block of ten penny reds on reverse (one with corner missing), each stamp with London SW16 duplex (causing a clutter of cancels on the block). Manuscript note of front "Paid. Ten stamps other side - two this." US red "5/CENTS" and "PAID" on front also. A little grubby. .. 30.
- 438 --; 1882 cover to Gênes franked with 1880-81 5d indigo (affixed sideways) tied by two strikes of London squared octagon cancel. .. 30.
- 439 --; 1885 cover to Barcelona franked 1883-84 2½d (upside-down), and 1890 cover to Bordeaux franked with 1881 1d and 1887 2½d, each cover has stamps cancelled by Hoster machine cancel (different types). .. 20.
- 440 --; 1885-1923 seln. of eight illustrated printed advertising envelopes, all commercially used. 30.
- 441 --; mix of items inc. QV 2/6 stamp cancelled DONCASTER/GRANDSTAND c.d.s. (fair), KE7 5/- with oval MILLERS DALE/STATION/MID.RY (fair), three 1911 postcards with Glasgow Exhibition c.d.s. and Clachan cachets, 1924 Wembley unused p.stat. 1d postcard and 1½d envelope, etc. (14 items) .. 20.
- 442 **Mulreadys and Caricatures**; 1840 (10 Aug.) Mulready 1d lettersheet used to Potters Bar, with smudged red MC and boxed "No 1" on front, v.fine red two-line Bishops Stortford/Penny Post, and two datestamps on reverse. A little grubby etc. .. 50.
- 443 --; 1840 (26 Nov.) Mulready 1d envelope (forme A176) used to Great Ilford with red MC on front, smudged Rochdale c.d.s. etc. on reverse. Some wear. .. 40.
- 444 --; Hume's "Britannia seated on egg" envelope fine unused, inscribed "*Comic Envelopes sold by R.W. Hume, Leith*". .. 50.
- 445 --; Hume's "Balloon" envelope fine unused (a little creased), inscribed "*These Patent Comic Envelopes, Nos. 1,2,3, & 4, sold by R.W. Hume, Leith*". .. 50.
- ➡ **Islands**; see UK; Country Stamps.
- 446 **Jersey**; file box of pres.packs, booklets, etc. Also some Guernsey, other countries. (100s) ☑ 24.
- ➡ --; see also UK Postal History (1861).
- 447 **United Kingdom Collections and Mixed Lots**; 1971-2010 collection of u.m. commems in binder and stockbook – largely complete for stamps, missing most min. sheets, greetings, occasions, and a few others. Face value c.£750. ☑ ▲ .. £450.
- 448 --; 1841-2007 four volume collection of m.m. and u. with pre-decimal mint mostly without gum. Main value in decimal m.m. commems (1978-2007 mostly complete without Greetings but with pencil marks on reverse). Decimal face c.£720. Toning due to storage. (100s) ☑ ▲ .. £350.
- 449 --; 1840-1968 colln. in album, a bit untidy in places but worthwhile, and mainly used up to KG5 then mixed m. & u. Starts with two Penny Blacks (2 to 2½ margins, black MCs), other line-engraved inc. mixed seln. of c.100 penny red plates, ½d plate mint marginal pair (both faulty), 1847-54 embossed 1/- (g.u. cut square), moderate range of surface-printed, 1924-25 both Wembley sets g./f.u., KG6 high values, 1952-54 Tudor set u.m., 1955-58 Edward Crown set u.m., early phosphor commems mixed mint and some used, reasonable seln. of used postage dues, and a few varieties (inc. 1968 Christmas 9d with brown colour shift), etc. Condition varies but many are good/fine/v.f. (100s) ☑ .. £260.
- 450 --; 1952-70 mint collection (mainly u.m.) of defins, commems, country, and postage dues in Lighthouse printed album, inc. 1952 Tudor set u.m., 1955-58 Waterlow Castles set m.m., 1955-58 Edward Crown set u.m., 1959 phosphor-graphite set u.m., some Wilding water-mark invt./sideways, 1959 DLR Castles set u.m. (few rough perfs), early phosphor commems u.m., etc. Fairly complete, not everything checked by us, almost all fine but just a few faults, some toning at mounts does not appear to affect stamps. Also a *New Age* binder with some 1960s commems. (100s) ☑ .. £200.

United Kingdom, continued.

- 451 **United Kingdom Collections and Mixed Lots;** 1841-1964 (and a few later) collection in album with a good range of Penny Red Plates used (almost complete), a few other line-engraved, reasonable surface-printed, 1883-84 Lilac & Green set (10) u., KE7, fair range of KG5 inc. 1928 cover (KG5 1d cancelled Cambridge and attached bisect of another not tied, 1d postage due cancelled Taunton, crease and toning), KG6 with wmk. varieties and high values, QE with many used Wildings, some Castles, etc. (100s) ☒ .. £180.
- 452 --; 1840-1970 m. & u. colln. in large stockbook, from three used 1840 Penny Blacks (one almost 4-margin, others poorer), 1840 2d blue poor used, various line-engraved, embossed set poor u. cut-to-shape, a few surface-printed, KE7 Govt. Parcels 2d m.m., and so on, with much later m. & u. with dupl. (1,000s) ☒ £170.
- 453 --; an album and a stockbook of mixed UK stamps, the main value in the mint decimals. Also bundle of presentation packs and other loose. (Decimal face estimated c.£257). Also inc. some used decimal booklet panes. ☒ £150.
- 454 --; 1840-1977 printed album *Historic Stamps of Britain* with Penny Black (2+ margins, red MC), 1840 2d Blue (2 + margins, black MC), some other value in QV to KG6. (100s) ☒ £100.
- 455 --; u.m. commems for 1971-72, 1975, 1977-88, 1990, 1992, 1995, 1998, and 1999 in two albums. Face value c.£168. ☒ ▲ £100.
- 456 --; 1984-98 colln. of u.m. commems, not complete, with some definitives and country stamps, in an album. Face value c.£146. (100s) ☒ ▲ 85.
- 457 --; album of mainly u.m. Machins – mainly PSB panes, miniature sheets, a few Post & Go, etc. Mint decimal face c.£117. ☒ 80.
- 458 --; three stockbooks of KG6 m. & u., QE pre-decimal commems m. & u., and mainly u. commem odds, and a small file box with FDCs, dupl. mint Wildings, and other mixed items. (100s) ☒ 60.
- 459 --; box of binders with covers etc. – binder of railway covers, binder of WW2 anniversary covers by Benham, 2 binders of UK FDCs, binder of military related covers. (100s) ☒ 50.
- 460 --; 1912-70 (and a few earlier) m.m. & u. collection in Davo hingeless album inc. 1948 S.Wedding £1 u.m. etc. (100s) ☒ 30.

THE END OF THE SALE

© Robert Murray 2019

VIEWING ARRANGEMENTS**Viewing at our Shop;** The shop will be open at the following times for viewing.Tuesday 28th May 12 noon-4pmWednesday 29th May 2pm-8pmThursday 30th May 10am-6pmSaturday 1st June 12 noon-6pm

Viewing by appointment available at some other times (e.g. the Friday)

Viewing at the Auction Venue; Monday 3rd June;Larger lots (marked “☒” in the description); on view at auction venue from 3pm: Smaller lots, on view by 4.00pm. Viewing will end at about 6.50pm.

Lots marked “[1a]” are not taken to the auction venue (see information box on next page).

A U C T I O N P R O G R A M M E

◆ Our next auction is planned for late August 2019 ◆

We will shortly be fixing provisional dates for our auctions in the second half of this year. Once this is done, these dates will be displayed in our shop and on our website.

CHANGES IN AUCTION CHARGES

As from our first auction after the summer (probably late August) there will be some increases in our charges. Some of these have been unchanged for some years, and are being altered to generally keep up with inflation or changes in our expenses.

In the auctions;

The main Vendor's commission remains unchanged at 12% + v.a.t.

Lot fee now £1.70 (was £1.50) + v.a.t.

The Vendor Administration fee will be £7.00 (prev.£6.50) +v.a.t.

Our minimum charge per vendor per auction will change from £10 + v.a.t. to £12 + v.a.t. (but this only comes into effect if the total of normal charges is less than £12).

The Buyer's Premium will become 12% (previously 10%) inclusive of v.a.t.

The Buy or Bid Sale entry fee per lot will increase from 25p to 50p per lot, with commission on sales being unchanged at 10%. (The entry fee was last changed eighteen years ago !)

IMPORTANT; Viewing Arrangements for "Not-To-Auction" Lots.

This relates to all lots in this auction which have the "[1a]" symbol in their description, signifying that they will not be taken to the auction venue. It will be arranged so that these lots can be viewed at our shop premises on auction day, and that purchases can be collected that same evening.

{a} In addition to the normal viewing arrangements noted above, any lots marked "[1a]" can be viewed at our smaller shop at 1A Inverleith Gardens, on Monday 25th March from 3pm to 6.45pm. Should there be pressure on available space, viewing will be at the discretion of our staff.

{b} After purchasing and paying for any "[1a]" lots at the auction venue, customers can take their receipted invoice to our shop and pick up these lots, from 8pm until ten minutes after the last customer has been cleared through accounts.

{c} Customers can still opt to collect their lots from us later in the week during shop opening hours.

{d} There is no parking directly outside 1A, so customers will have to park a little further along Inverleith Gardens. While we can lend you a trolley, there will be no available staff to carry boxes.

NORMAL BIDDING STEPS

We list here our normal bid steps for your information. This may be of help to bidders who are unable to attend the sale, as any written bids received which do not fit our normal pattern would usually be taken down to the next normal step. (We keep to these increments as much as possible, but do sometimes change if circumstances make it desirable.)

Up to £20, bids are in £1 steps. From £20 to £30, bids are in £2 steps.

From £30 to £50, bids are in £2 or £3 steps (i.e. £30, £32, £35, £38, £40, £42, £45, £48, £50).

From £50 to £100 in £5 steps. From £100 to £200, bids are in £10 steps.

Then £220, £240, £260, £280, £300, £320, £350, £380, £400, £420, £450, £480, £500, £550, £600, £650, £700, £750, £800, £850, £900, £950, £1,000, £1,100, £1,200, etc., and above this in 5% to 10% steps.

Methods of payment accepted at auction;

Cash (Sterling, Euro notes)

Cheque (from established customers)

Debit Card (no surcharge)

Credit Card (no surcharge)

Methods of payment accepted after auction; all the above plus

Direct bank transfer to our account (Robert Murray Stamp Shop, sort code 82-45-05, account 80371787) but please quote invoice number, and email or phone to advise us of payment,

plus PayPal by arrangement (additional fee of 4% UK, 5% foreign).

Abbreviations; a list of abbreviations and symbols used is normally included in the auction catalogue. We suggest that you keep a copy for future reference.

| | | | | | |
|---------|--------------------------------------|-------------------------------------|---------------------------------------|---------|-------------------|
| m./u.m. | mounted/unmounted mint | accum. | accumulation | | |
| l.m.m. | lightly mounted mint | colln. | collection | | |
| g./f.u. | good/fine used | unu. | unused | seln. | selection |
| v.f.u. | very fine used | inc. | including | pmk. | postmark |
| FDC | first day cover | PSB | prestige stamp booklet | cat. | catalogue price |
| lvs. | album leaves | bkt. | booklet | p.stat. | postal stationery |
| s.t.c. | stated to catalogue (by vendor) | | | m.s. | miniature sheet |
| S.o.W. | "Stamps of the World" catalogue | PNC | philatelic numismatic cover | | |
| c. | circa (usually approximate quantity) | PTSA | priced to sell at | | |
| c.d.s. | circular datestamp | [1a] | lot not being taken to auction | | |
| ▲ | Smaller bid steps accepted | <input checked="" type="checkbox"/> | earlier viewing of lot on auction day | | |

THIS IS HOW YOU CAN BID;

In Person. This is a public auction, and bids are made in person at the auction in the traditional manners.

By post. Please use the Bid Form supplied, and send first class.

Telephone bids will be accepted at any time before the sale (but the earlier the better). These bids should be confirmed in writing (post or email), even if the written confirmation will not reach us until after the auction. Numbers are 0131 552 1220, or 0131 478 7021 up to about 2pm on sale day, after which use the mobile number.

A mobile number (07974 962649) can be called on the afternoon and evening of sale only. Please speak to someone – no texts, no recorded messages. If no answer, just try again (we can be busy !).

E-mail bids should be sent to us at auction@stamp-shop.com at any time from the moment you receive this catalogue until 2.45pm on Monday 3 June. Please do not e-mail bids to us after that time. Please use the format and wording used on the bid form that comes with your auction catalogue, and include your postal address. (We have a back-up email address of stamps@blueyonder.co.uk in case of problems.) We normally confirm receipt of email bids within 24 hours (not on the Sunday before the auction, and usually within one hour on the auction day). If you do not get an email confirmation from us within that time, please try again, or phone.

Euro Currency; We are happy to accept Euro cash payments in our shop. We normally allow the market rate rounded down to the next whole penny. For example, at the time of writing, the market rate is 0.8809, so we are allowing 88p per Euro (which is probably better than your bank will give you). You can also pay for lots in this auction by Euro banknotes (postal customers please confirm before sending). We also accept payments in our shop in Euros, and we buy some old "legacy" currencies, as well as other coins and notes.

CREDIT CARDS

We are happy to accept MasterCard and Visa credit card payments, as well as payments by Debit Card. This facility can be used by room purchasers (who pay their accounts at the auction), by other local customers (who pay their bill in our shop), and by postal buyers.

In order to deal with postal clients, our bid forms have been designed to make space for credit or debit card instructions.

If you want your purchases charged in this way, please complete the appropriate section.

Do not complete these details unless you want to pay by card, **and to have the lots posted.**

List of Prices Realised Stamp and Collectables Auction 25 March 2019

| | | | | | | | | | | | | | | | | | | | |
|-----|------|-----|------|-----|-------|-----|------|-----|------|-----|-------|------------|-------|-----|-------|-----|------|-----|-------|
| 1 | 240. | 2 | 190. | 3 | 80. | 4 | 65. | 5 | 150. | 6 | 95. | 7 | 320. | 8 | 80. | 9 | 60. | 10 | 70. |
| 11 | 130. | 12 | 100. | 13 | 80. | 14 | 120. | 15 | 75. | 16 | 65. | 17 | 160. | 18 | 35. | 19 | 55. | 20 | 80. |
| 21 | 48. | 22 | 55. | 23 | 45. | 24 | 45. | 25 | 32. | 26 | 35. | 27 | 48. | 28 | 38. | 29 | 35. | 30 | 50. |
| 31 | 28. | 32 | 60. | 33 | 28. | 34 | 65. | 35 | 48. | 36 | 32. | 37 | 180. | 38 | 26. | 39 | 20. | 40 | 20. |
| 41 | 30. | 42 | 16. | 43 | 24. | 44 | 16. | 45 | 17. | 46 | 10 | 47 | 80. | 48 | 100. | 49 | 130. | 50 | 90. |
| 51 | 100. | 52 | 85. | 53 | 30. | 54 | 80. | 55 | 42. | 56 | 1900. | 57 | 1200. | 58 | 1300. | 59 | 350. | 60 | 500. |
| 61 | 42. | 62 | 19. | 63 | 220. | 64 | 160. | 65 | 200. | 66 | 26. | 67 | 240. | 68 | 70. | 69 | 400. | 70 | 26. |
| 71 | 100. | 72 | 85. | 73 | 30. | 74 | 26. | 75 | 75. | 76 | 50. | 77 | 70. | 78 | 150. | 79 | 26. | 80 | 16. |
| 81 | 35. | 82 | 32. | 83 | 70. | 84 | 75. | 85 | 28. | 86 | - | 87 | 60. | 88 | 35. | 89 | 140. | 90 | 28. |
| 91 | 75. | 92 | 85. | 93 | 160. | 94 | 35. | 95 | 42. | 96 | 150. | 97 | 40. | 98 | 50. | 99 | 90. | 100 | 130. |
| 101 | 130. | 102 | 280. | 103 | 470. | 104 | 410. | 105 | 140. | 106 | 700. | 107 | 240. | 108 | 46. | 109 | 240. | 110 | 250. |
| 111 | 24. | 112 | 200. | 113 | 85. | 114 | 15. | 115 | 20. | 116 | 55. | 117 | 75. | 118 | 55. | 119 | 38. | 120 | 200. |
| 121 | - | 122 | - | 123 | 95. | 124 | 100. | 125 | 35. | 126 | 65. | 127 | 150. | 128 | 170. | 129 | 90. | 130 | 240. |
| 131 | 35. | 132 | 30. | 133 | 50. | 134 | 35. | 135 | 30. | 136 | - | 137 | 7. | 138 | 100. | 139 | 90. | 140 | 38. |
| 141 | 22. | 142 | 55. | 143 | 60. | 144 | 110. | 145 | 65. | 146 | 35. | 147 | 40. | 148 | 48. | 149 | 95. | 150 | 35. |
| 151 | 50. | 152 | 80. | 153 | 35. | 154 | 13. | 155 | 70. | 156 | - | 157 | 35. | 158 | 28. | 159 | 80. | 160 | 110. |
| 161 | 38. | 162 | 42. | 163 | 45. | 164 | 22. | 165 | 16. | 166 | 35. | 167 | 55. | 168 | 170. | 169 | 70. | 170 | 22. |
| 171 | 55. | 172 | 45. | 173 | 12. | 174 | 12. | 175 | 45. | 176 | 48. | 177 | 22. | 178 | - | 179 | 12. | 180 | 19. |
| 181 | 35. | 182 | 11. | 183 | 35. | 184 | 13. | 185 | 95. | 186 | 24. | 187 | 60. | 188 | 70. | 189 | 13. | 190 | 35. |
| 191 | 48. | 192 | 70. | 193 | 15. | 194 | 60. | 195 | 65. | 196 | 20. | 197 | 28. | 198 | 17. | 199 | 28. | 200 | - |
| 201 | 28. | 202 | 20. | 203 | 28. | 204 | 42. | 205 | 110. | 206 | 30. | 207 | 130 | 208 | 35. | 209 | 260. | 210 | 170. |
| 211 | 170. | 212 | 100. | 213 | 160. | 214 | 55. | 215 | 65. | 216 | 50. | 217 | 65. | 218 | 26. | 219 | - | 220 | 40. |
| 221 | 28. | 222 | 22. | 223 | 14. | 224 | 480. | 225 | 60. | 226 | 26. | 227 | 14. | 228 | 55. | 229 | - | 230 | 10. |
| 231 | 48. | 232 | 42. | 233 | 26. | 234 | 42. | 235 | - | 236 | 35. | 237 | 40. | 238 | 60. | 239 | 65. | 240 | - |
| 241 | 50. | 242 | 32. | 243 | 13. | 244 | - | 245 | - | 246 | 24. | 247 | 30. | 248 | 950. | 249 | 400. | 250 | 300. |
| 251 | 220. | 252 | 200. | 253 | 190. | 254 | 350. | 255 | 110. | 256 | 150. | 257 | 65. | 258 | 55. | 259 | 80. | 260 | 48. |
| 261 | 110. | 262 | 55. | 263 | 55. | 264 | 55. | 265 | 75. | 266 | 48. | 267 | 90. | 268 | 60. | 269 | 75. | 270 | 65. |
| 271 | 50. | 272 | 65. | 273 | 65. | 274 | 65. | 275 | 70. | 276 | 42. | 277 | 65. | 278 | 100. | 279 | 75. | 280 | 110. |
| 281 | 48. | 282 | 70. | 283 | 80. | 284 | 100. | 285 | 80. | 286 | 110. | 287 | 75. | 288 | 55. | 289 | 110. | 290 | 55. |
| 291 | 55. | 292 | 42. | 293 | 35. | 294 | 300. | 295 | 130. | 296 | 110. | 297 | 75. | 298 | 80. | 299 | 60. | 300 | 140. |
| 301 | 80. | 302 | 65. | 303 | 260. | 304 | 240. | 305 | 140. | 306 | 90. | 307 | 110. | 308 | 200. | 309 | 120. | 310 | 110. |
| 311 | 260. | 312 | 60. | 313 | 70. | 314 | 80. | 315 | 150. | 316 | 160. | 317 | 170. | 318 | 320. | 319 | 75. | 320 | 1500. |
| 321 | 70. | 322 | 160. | 323 | 70. | 324 | 160. | 325 | 95. | 326 | 190. | 327 | 85. | 328 | 290. | 329 | 350. | 330 | 200. |
| 331 | 22. | 332 | 13. | 333 | 1000. | 334 | 100. | 335 | 41. | 336 | 110. | 337 | 85. | 338 | 200. | 339 | 90. | 340 | 480. |
| 341 | 85. | 342 | - | 343 | 42. | 344 | 60. | 345 | 28. | 346 | 9. | 347 | 95. | 348 | 150. | 349 | 130. | 350 | 160. |
| 351 | 50. | 352 | 65. | 353 | 140. | 354 | 55. | 355 | 90. | 356 | 180. | 357 | 45. | 358 | 45. | 359 | 35. | 360 | 320. |
| 361 | 100. | 362 | 280. | 363 | 110. | 364 | 170. | 365 | 55. | 366 | 50. | e. & o. e. | | | | | | | |

The Auction Venue is 650 metres West of our Shop, on Ferry Road. It has its own car park.

The bar (upstairs) is open 6-10pm and also serves a variety of food, teas and coffees. Please note that we do not allow drinks at the viewing tables, but you are welcome to bring drinks down from the bar once the auction has started.

Our Facebook page often has a few illustrations and further descriptions and comments, extra to what is in the catalogue. Just search for “Robert Murray Stamp Shop” . . . feel free to “like” us !

Follow us or connect online – as well as our main website at www.stamp-shop.com we can be found on the social media by searching for “**Robert Murray Stamp Shop**” on LinkedIn and Facebook.

Our Website will still be the first port-of-call for most information, but the Facebook page is a useful place for news, updates, snippets, and comments.

BID FORM – Stamps and Collectables Auction 3 June 2019

to **Robert Murray,**
5 & 6 Inverleith Gardens,
Edinburgh, EH3 5PU

Tel. 0131.552 1220 :: 0131.478 7021

Email auction@stamp-shop.com

Please bid on my behalf for the undermentioned lots, up to the limits stated. I understand that lots will be purchased as cheaply as other bids, or reserves, if any, permit. I accept the rules printed on the reverse of this bid form.

Date; Signed;

| Lot No | Description | Maximum Bid | Lot No. | Description | Maximum Bid |
|--------|-------------|-------------|---------|-------------|-------------|
|--------|-------------|-------------|---------|-------------|-------------|

NB; a buyer's premium of 10% will be added to the hammer price of any purchases.

BLOCK CAPITALS, PLEASE !

**Please post my purchases and charge to my
credit/debit card;**

Name;

☐ MasterCard ☐ Visa ☐ Debit Card

Address;

Card number;

Postcode;

Telephone number;

Expiry date; Start date; Security Code;

Signed;Name as on card;

bid form overleaf

FORTHCOMING AUCTIONS; Our next auction is planned for late August 2019. This auction is conducted according to the "Philatelic Auctioneers Standard Terms and Conditions of Sale" (available if requested), with the exception of Clause 6, where "Scottish" should be substituted for "English".

A Buyer's Premium of 10% (inclusive of global v.a.t.) will be added to the sale price of all lots.

Telephone bids are accepted, but must later be confirmed in writing. Alternatives and limits are accepted.

Material can be accepted at any time for inclusion in future sales. Our commission is 12% of the sale price, plus administration fee of £1.70 per lot + £7 per vendor (all plus v.a.t.). Full details on request.

We DO NOT charge buyers a handling charge per lot, nor is there VAT added to any sale prices.

Please bid early. In the case of equal bids, the lot will be sold to the person whose bid was received first (unless free bidding in the room equals the top book-bid, although the Auctioneer will try to regulate the bidding in such a way as to avoid this).

Apart from viewing the lots in person, you can get a better description of any lot, by telephoning or writing. (Photocopies are available, at a minimal plus postage, or request scans by email.)

Remember the Buy or Bid Sale - bring items along on the night. We will try to sell them for you, at a charge of 10% + 25p (optional insurance 1% extra). Have a look at what's on offer before and during the main auction. You can buy items outright or place a bid. (Larger lots delivered to our shop are charged £1 per lot entry fee.)

The annual subscription for our auction catalogues is currently £7 for inland addresses. If you are not already on our mailing list, please send us £9 with a note of your name and address. Regular bidders and buyers may qualify for free renewal. Rates abroad are European countries £12, Overseas £15.

Successful postal bidders should note that postage stamps are not an acceptable means of paying your account.

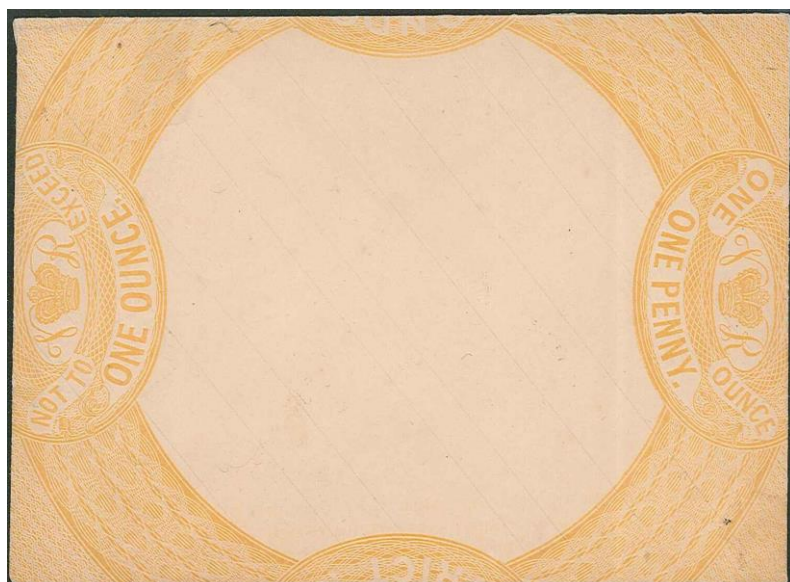
Prices realised for this sale will be published with our next catalogue. If you are not normally on our mailing list, the List of Prices Realised can be had by simply sending us a stamped addressed envelope. Alternatively, you can be put on our auction mailing list (see above).

The telephone number at the Stewart's-Melville Pavilion is 0131.551 2331 (mobile 07974 962649).

Open Bids ("Buy Bids") are not normally accepted. If such bids are made, they will be taken to mean a bid of ten times the printed estimate.

Any invoices remaining unpaid fourteen days from the auction date (or after delivery to a postal buyer) will attract interest at the rate of 2% per month or part thereof.

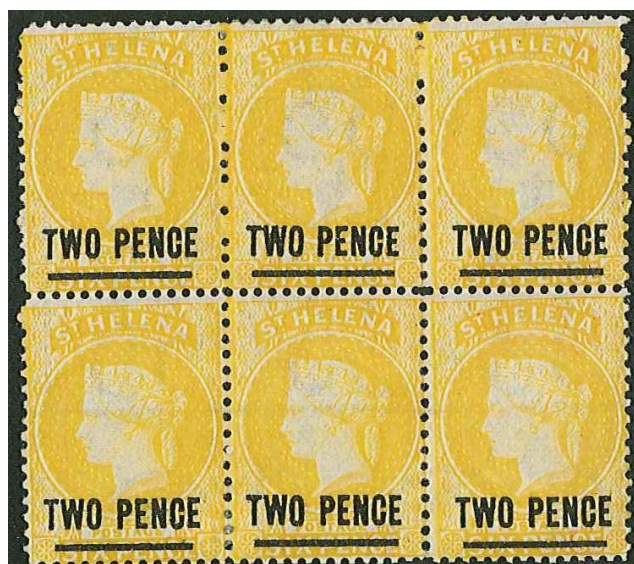
Robert Murray
Scotland's Best-Stocked and
Most Popular Stamp Shop.



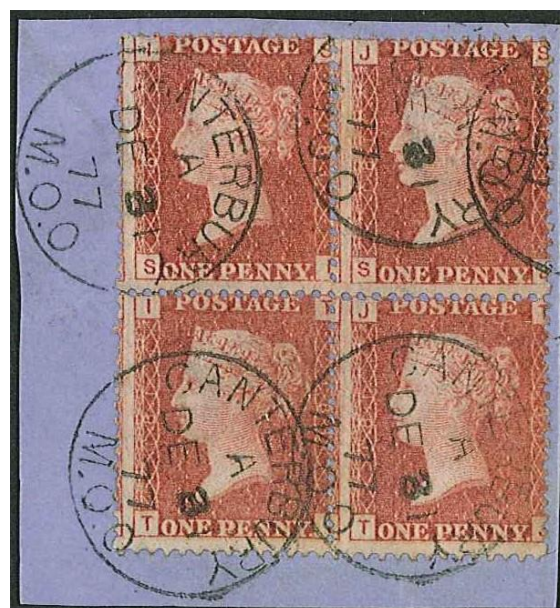
320



323



266



330



334



3

208



110



153



326



333